

Installation and Operator's Manual

5201014

Trailer Spare Tire Carrier

GENERAL SAFETY PRECAUTIONS



This symbol points out important safety instructions which, if not followed, could endanger the personal safety and/or property of yourself and others. Read and follow all instructions in this manual before attempting to install or operate this spreader. Failure to comply with these instructions may result in personal injury. When you see this symbol. **HEED ITS WARNING!**



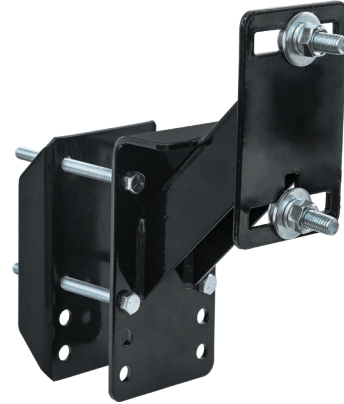
WARNING

Improper installation and operation could cause personal injury, and/or property damage. Observe the following Safety Precautions before, during and after operating this spare tire carrier. By following these precautions and common sense, possible injury to persons and potential damage to this accessory may be avoided.

- Read and fully understand the entire Installation and Operator's Manual before using the Spare Tire Carrier
- Read and understand all instructions and safety precautions as outlined in all manufacturers' manuals for the trailer you are using
- Examine the spare tire carrier monthly for structural cracks, bends, damage and any other condition that may affect the safe operation of the product. Do not use if damaged in any way.
- It is the operator's responsibility to make sure the usage of this product meets all local motor vehicle laws and regulations. Do not obscure markers, taillights, running lights or license plate.
- Make certain the spare tire carrier or tire does not interfere with the trailer's normal movement or blocks the driver's view.

SPARE TIRE CARRIER USE AND CARE

- Do not modify the spare tire carrier in any way. Any modification may impair the function and/or safety and could affect the life of the equipment.
- Check monthly for damaged or worn parts before using the spare tire carrier. Broken or worn parts will affect the spare tire carrier's operation. Replace or repair damaged or worn parts immediately.
- **Do not exceed the spare tire carrier's maximum weight capacity of 100 lb (45 kg)**



- Mount the spare tire carrier so that it is balanced evenly. Uneven mounting may cause personal injury to the operator or prematurely failed Spare Tire Carrier.

ASSEMBLY

1. Identify a safe location on the trailer frame to mount the spare tire carrier as described in the SAFETY PRECAUTION section of this manual.
2. Attach the mounting bracket to the spare tire carrier via the top two holes using the hex cap screws, washers, and hex nuts. Make sure the formed flanges of the mounting bracket point away from the trailer frame. (See Figure 1)
3. Place the mounting bracket and spare tire carrier flat against the horizontal trailer frame. Rest the hex cap screws connecting the mounting bracket and carrier on or as close to the horizontal trailer frame cross member as possible. (See Figure 2)
4. Place two more hex cap screws below the trailer frame in the holes closest to the trailer frame.
5. Attach and tighten lock washers and hex nuts to each hex cap screw to securely clamp the tire carrier to the trailer frame. Do not overtighten or crush the tubing.
6. Mount the spare tire to the mounting plate by running the carriage bolts through the wheel lug holes and secure the bolts using the washers and hex nuts.
7. To help prevent the theft of the tire and wheel, use a cable and lock (not included).

MAINTENANCE

- Examine the general condition of the spare tire carrier for any damage or worn parts before installation and monthly after mounted to your trailer. Check all nuts and bolts to make sure they are secure and tight monthly. Have necessary repairs made by qualified service personnel.

Fig. 1

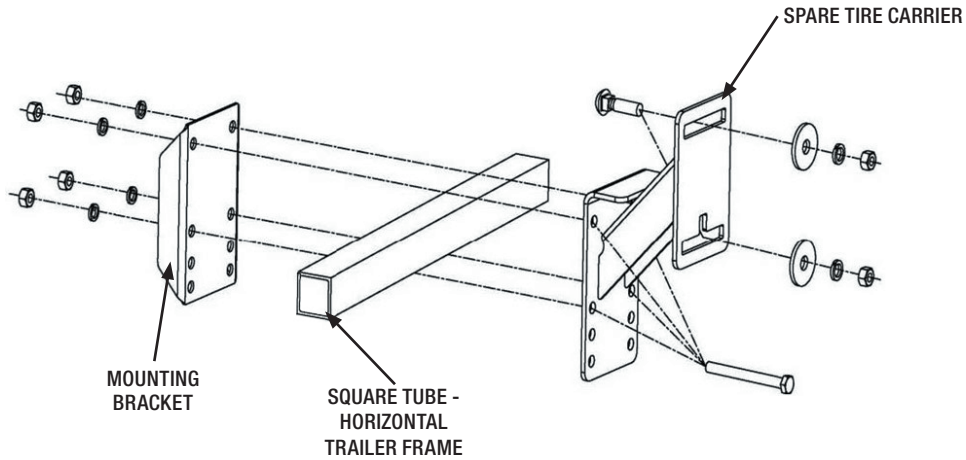
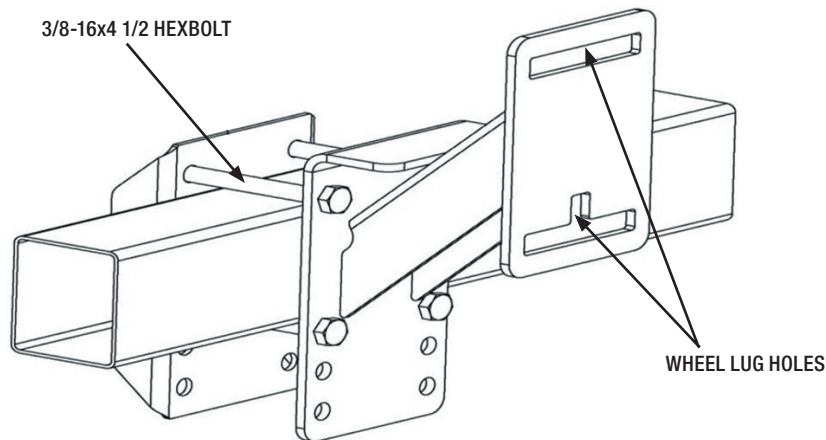


Fig. 2



Bill of Materials

QTY.	DESCRIPTION
1	MOUNTING BRACKET
1	SPARE TIRE CARRIER
4	SCREW, HHC, 3/8-16X4 1/2, FULL THD, GR5, ZN
4	WASHER, LOCK, 3/8, ZN
4	NUT, HEX, 3/8-16, ZN
2	BOLT, CARRIAGE, 1/2-13 X 1-3/4, GR5, ZN
2	WASHER, FLAT, 1/2, USS, ZN
2	WASHER, LOCK, 1/2, ZN
2	NUT, HEX, 1/2-13, ZN

WARRANTY

Buyers Products Co. warrants all truck/trailer hardware manufactured or distributed by it, to be free from defects in material and workmanship for a period of one year from date of shipment. Parts must be properly installed and used under normal conditions. Any product which has been altered, including modification, misuse, accident or lack of maintenance will not be considered under warranty. Normal wear is excluded. The sole responsibility of Buyers Products Co. under this warranty is limited to repairing or replacing any part or parts which are returned, prepaid, and are found to be defective by Buyers Products Co. Authorization from Buyers Products Co. must be obtained before returning any part. No charges for transportation or labor performed on Buyers' products will be allowed under this warranty.