

Installation and Operating Instructions

LT23 Adjustable Sprayer Rack for Landscape Trailers

Safety Precautions



This symbol points out important safety instructions which, if not followed, could endanger the personal safety and/or property of yourself and others. Read and follow all instructions in this manual before attempting to install or operate this sprayer. Failure to comply with these instructions may result in personal injury. When you see this symbol. HEED ITS WARNING!

WARNING

Read and follow all instructions in this manual before attempting to install or use this sprayer rack. It is the installers sole responsibility to assure that the rack is installed safely and securely to a component that will adequately support the equipment. Failure to comply with these instructions could endanger the personal safety and/or property of yourself and others.

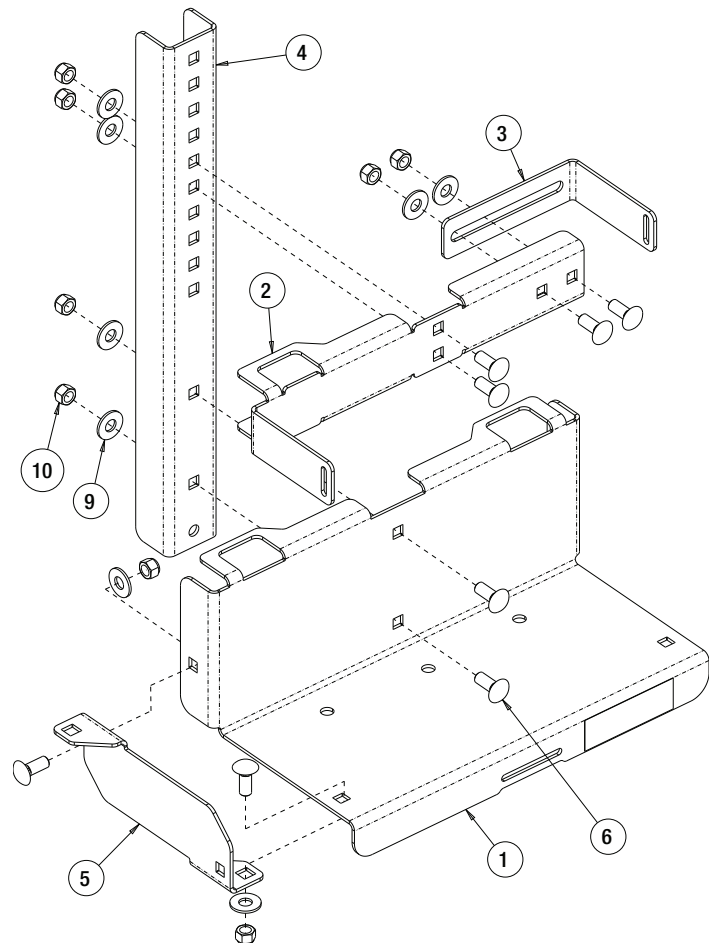
WARRANTY

Buyers Products Co. warrants all truck/trailer hardware manufactured or distributed by it, to be free from defects in material and workmanship for a period of one year from date of shipment. Parts must be properly installed and used under normal conditions. Any product which has been altered, including modification, misuse, accident or lack of maintenance will not be considered under warranty. Normal wear is excluded. The sole responsibility of Buyers Products Co. under this warranty is limited to repairing or replacing any part or parts which are returned, prepaid, and are found to be defective by Buyers Products Co. Authorization from Buyers Products Co. must be obtained before returning any part. No charges for transportation or labor performed on Buyers' products will be allowed under this warranty.

Assembling/Fitting the Adjustable Sprayer Rack to Your Backpack Sprayer

Tools Required:

- (1) 9/16" Socket and Ratchet



1. Assemble Backbone (item 4) to Base (item 1) with two 3/8" Carriage Screws (item 6), two Washers (item 9) and two Lock Nuts (item 10) as shown in figure.

2. Assemble Side Wall (item 5) to Base (item 1) with two 3/8" Carriage Screws (item 6), two Washers (item 9) and two Lock Nuts (item 10) as shown in figure. Side Wall tab should be UNDERNEATH Base.

ATTENTION: Side Wall (item 5) can be placed on either side of the Sprayer Rack. Install Side Wall on the OPPOSITE side of the pump handle of the sprayer.

3. Stand rack upright and place the sprayer on the Base (Item 1) with the shoulder straps against the Base wall. Confirm that the Side Wall (item 5) is on the opposite side of the pump arm. If not, redo step 2.

4. With the sprayer still on the Base (item 1), position Upper Bracket (item 2) along Backbone (item 4) so that its center is between the sprayer tank's middle to $\frac{3}{4}$ of its height. Note which square Backbone holes line up nearest to the square Upper Bracket holes.

5. Remove the sprayer and assemble Upper Bracket (item 2) to Backbone (item 4) with two $\frac{3}{8}$ " Carriage Screws (item 6), two Washers (item 9) and two Lock Nuts (item 10) as shown in figure at the location determined in step 4.

ATTENTION: Upper Bracket (item 2) can be placed with its arm on either side of the sprayer rack. Install Upper Bracket so that the arm is on the same side as the Side Wall (item 5).

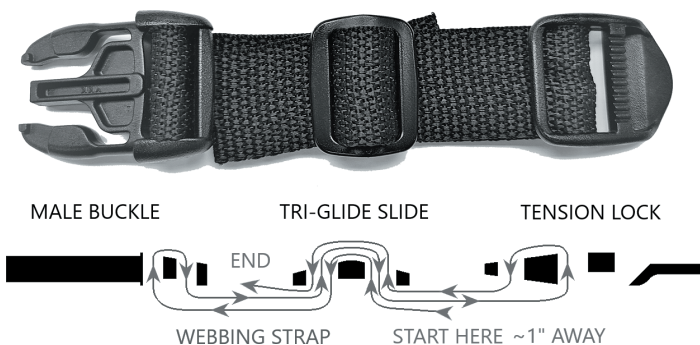
6. Assemble Slider Arm (item 3) to back side of Upper Bracket (item 2) with two $\frac{3}{8}$ " Carriage Screws (item 6), two Washers (item 9) and two Lock Nuts (item 10) as shown in figure. **DO NOT FULLY TIGHTEN.**

7. Stand rack upright and place the sprayer back on the Base (Item 1) with the shoulder straps against the Base wall. Adjust the Slider Arm (item 3) so that it is in contact with the sprayer tank &/or frame. Tighten Slider Arm in place by tightening the Lock Nuts (item 10) assembled in Step 6. Remove sprayer.

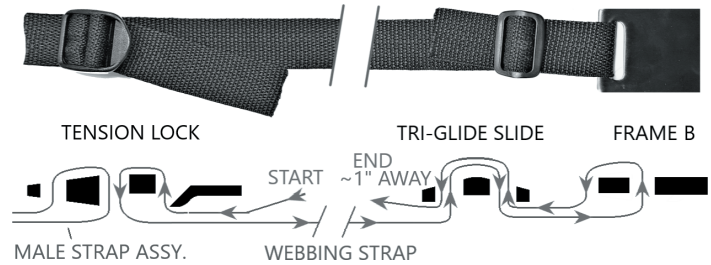
8. Assemble Female Buckle half (item 12) to Triglides (item 14) and to frame location A on Upper Bracket (Item 2) using one of the 16" Webbing Strap (item 11) as shown in the figure.



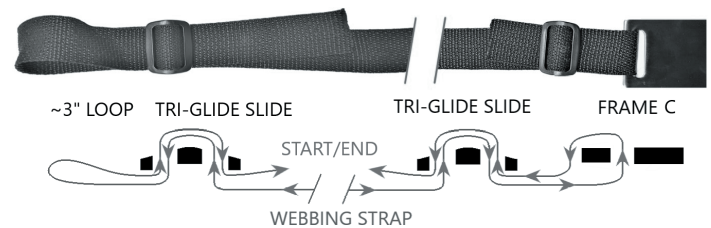
9. Assemble Male Buckle half (item 12) to Triglides (item 14) and to Tension Lock (item 13) using the other 16" Webbing Strap (item 11) as shown in the figure. Carefully note the position of the Tension Lock. The ribbed bar should be facing up.



10. Assemble the strap assembly created in step 9 to Triglides (item 14) and to frame location B on Slider Arm (item 3) using the 20" Webbing Strap (item 11) as shown in the figure.



11. Assemble two Triglides (item 14) to frame location C on Base (Item 1) using the 30" Webbing Strap (item 11) as shown in the figure. Using the Triglides, create approximately a 3" loop at the end of the strap assembly.



12. Stand rack upright and place the sprayer on the Base (Item 1) with the sprayer shoulder straps against the Base wall. Slip the male buckle strap assembly attached to the Slider Arm (item 3) through the 3" loop of the vertical strap connected to the Base and connect the male buckle to the female buckle on the strap attached to the Upper Bracket (item 2). Tighten the horizontal strap by pulling on the Webbing at the Tension Lock (item 13).

13. Adjust the slack of vertical strap, so that the 3" loop matches the height of the horizontal strap without pulling the horizontal strap down. The vertical strap does not need to be taut.

14. OPTIONAL: Cut the excess Webbing material from the adjusted vertical strap, leaving at least 1" of Webbing length from the upper Triglides. With the straps disconnected melt the cut end of the webbing with a lighter to prevent fraying.

Utility Trailer Installation Instructions

Before You Begin Installing:

1. Carefully select a mounting location that provides clearance for the pulling vehicle when in a tight turn (jack knife).
2. Mounting the rack on the curb side trailer is generally safer.

Tools Required:

- (1) Electric Drill
- (1) 13/32" Drill Bit
- (1) 9/16" Wrench and/or Socket
- (1) 7/32" Allen Wrench

CAUTION

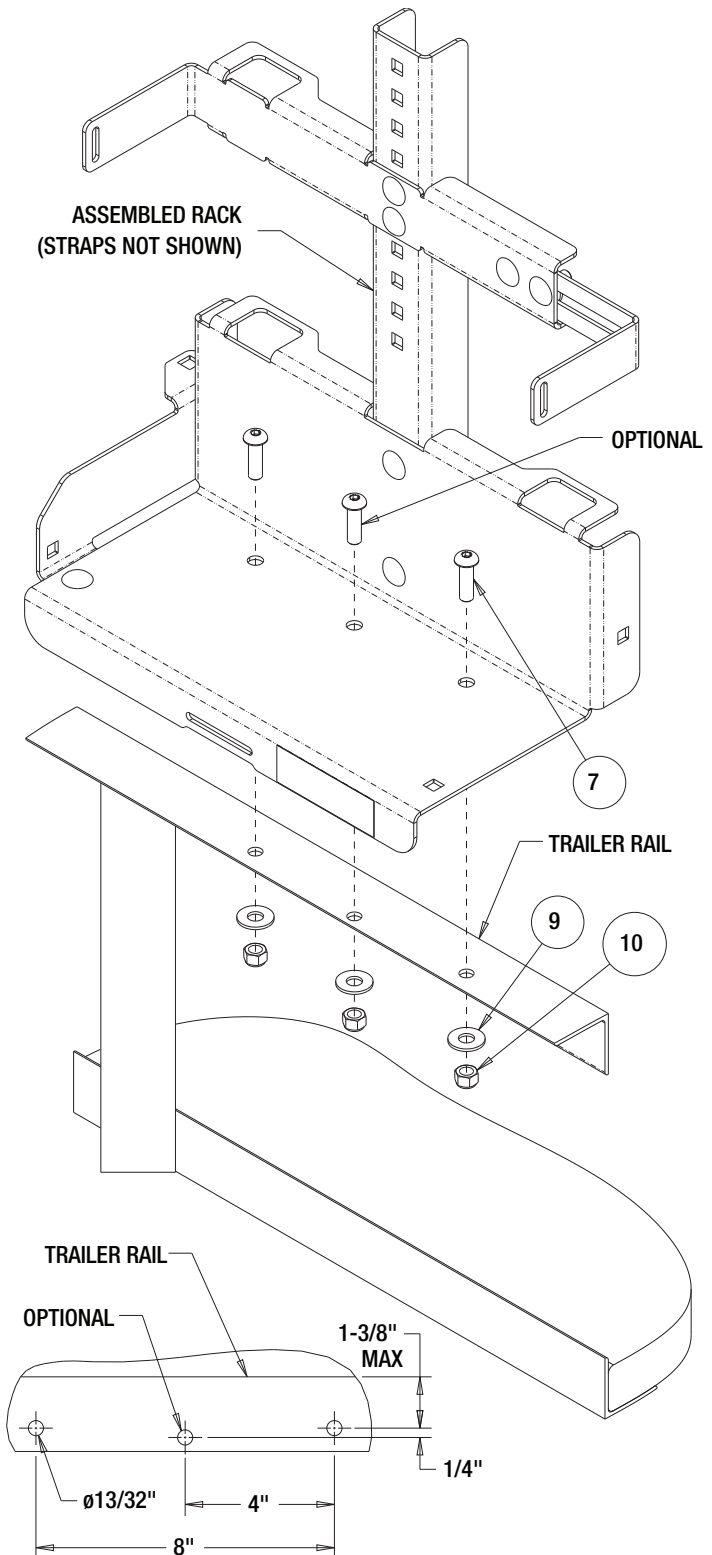
Always wear safety glasses when using power tools.

1. Place the assembled backpack sprayer rack on the rail of your utility trailer where you would like it mounted. Make sure the rack does not extend past the widest part of the trailer.
2. Mark the position of the two outer holes on the trailer rail. Make sure the marks made on the trailer rail are centered within the rail web and are not more than 1 3/8" away from the inner edge (see figure). **OPTIONAL:** Mark the position of the third center hole. This third mounting location will reduce rock in the rack.

WARNING

Check for locations of brake lines and electrical wiring etc., before drilling any holes. Any damage to trailer during installation is installer's full responsibility.

3. Drill 13/32" holes in the positions marked.
4. Bolt the assembled sprayer rack to the trailer with two (or three) 3/8"-16 x 1-1/4" Button Head Screws (item 7), Washer (item 9) and Lock Nuts (item 13) supplied and tighten. Installer to supply longer 3/8"-16 button head screws if required to fit a tube rail.
5. Make sure the sprayer rack is securely fastened to the trailer in accordance with this Installation Manual



Enclosed Trailer Installation Instructions

Tools Required:

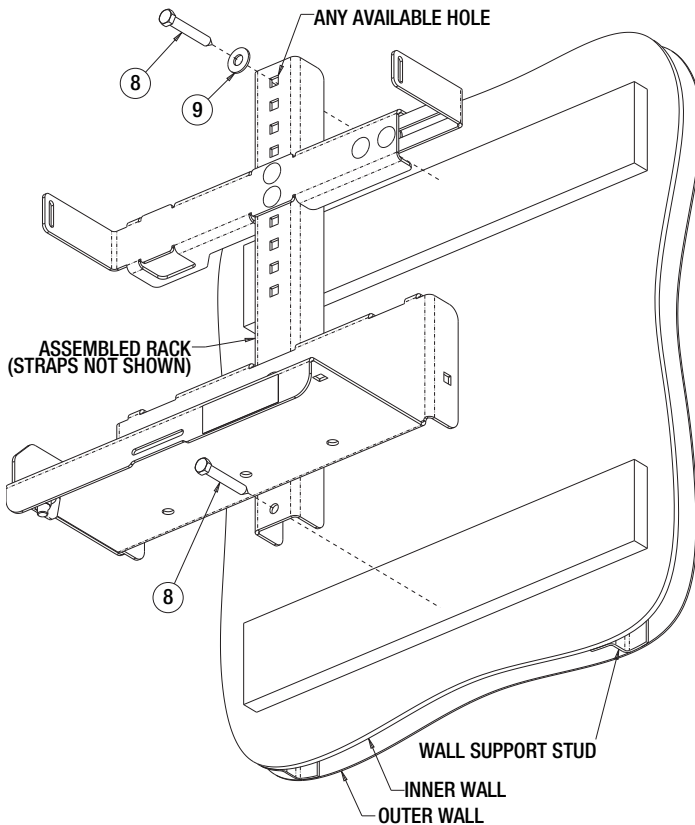
- 9/16" Wrench and/or Socket
- Electric Drill
- 9/32" Drill Bit
- 3/4" Thick Wood Shim Strips (installer supplied)
- Shim Screws (installer supplied)

CAUTION

Always wear safety glasses when using power tools.

WARNING

Check for locations of brake lines and electrical wiring etc., before drilling any holes. Any damage to trailer during installation is installer's full responsibility.



1. In order to mount the backpack blower rack to the wall of an enclosed trailer, you must first add 3/4" thick wood shim strips. These shim strips must be securely attached to at least two wall support studs with suitable fasteners. If you don't know what kind or length of fastener to use contact your trailer dealer or manufacturer for their recommendation.

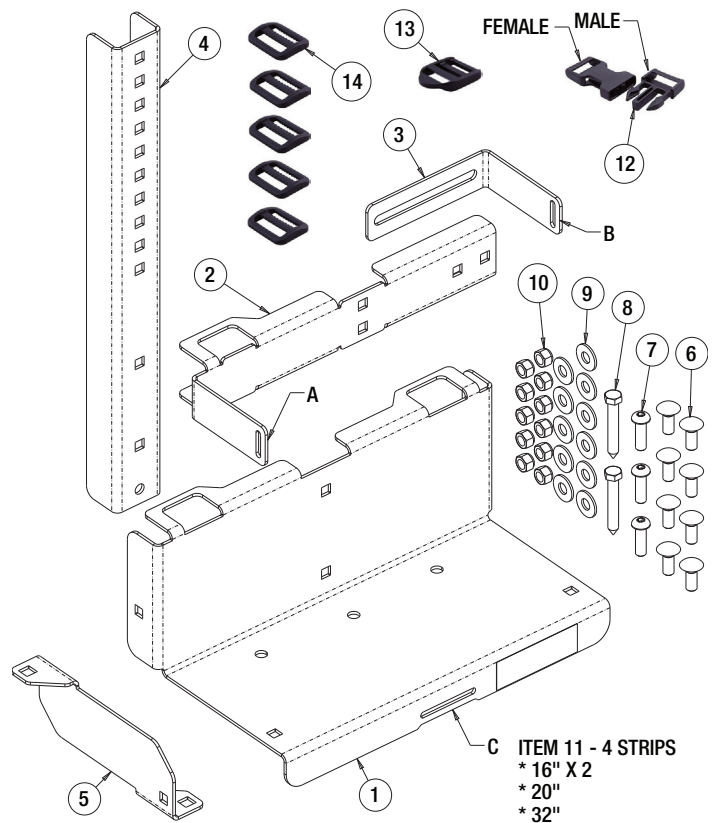
2. Place the assembled sprayer rack against the shims, hold level, and mark the position of two mounting holes in rack, one in the Backbone (item 4) below the Base (item 1), and any available square hole in the upper portion of the Backbone, the higher the better.

- 3.** Drill two 9/32" holes in the locations marked in step 3. Be extremely careful not to drill through the outside trailer wall.
- 4.** Fasten the rack to the trailer wall with two 3/8" Lag Screws (item 8) supplied. Use Washer (Item 9) on square hole.
- 5.** Make sure the sprayer rack is securely fastened to the trailer in accordance with this Installation Manual

In-Season Maintenance

Inspect and retighten fasteners monthly. Replace any loose or damaged fasteners, straps or clips.

Bill of Materials



ITEM	PART NO.	QTY.	DESCRIPTION
1	3053811	1	BASE, SPRAYER RACK
2	3053812	1	UPPER BRACKET, SPRAYER RACK
3	3053813	1	SLIDER ARM, SPRAYER RACK
4	3053814	1	BACKBONE, SPRAYER RACK
5	3053815	1	SIDE WALL, SPRAYER RACK
6	FCB037516100	8	BOLT, 3/8-16 X 1 CARRIAGE
7	3004396	3	SCREW, BUTTON SOCKET HEAD CAP, 3/8-16 X 1-1/4
8	3054114	2	SCREW, HEX HEAD LAG, 3/8 X 2-1/2, ZN
9	FWF038100007	11	WASHER, FLAT 3/8 USS ZINC
10	FNE038016044	11	NUT, NYLOCK 3/8-16 X 7/16 ZINC
11	3054116	4	POLYPROPYLENE WEBBING, 1", BLACK
12	3054117	1	BUCKLE, DUAL SIDE RELEASE, 1" BLK PLASTIC
13	3054118	1	TRIGLIDE, TENSION LOCK, 1", BLK PLASTIC
14	3054119	5	TRIGLIDE, 1" BLACK PLASTIC