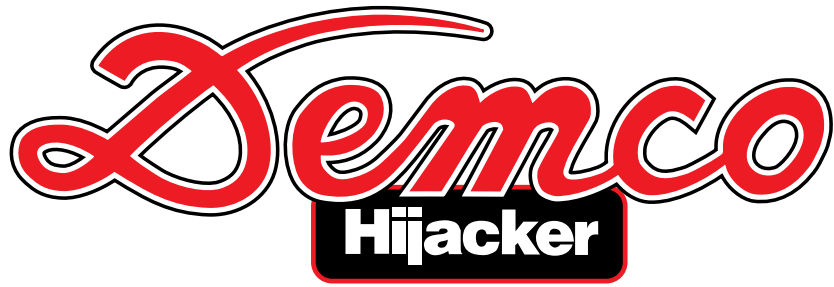


MANUAL
OPERATORS

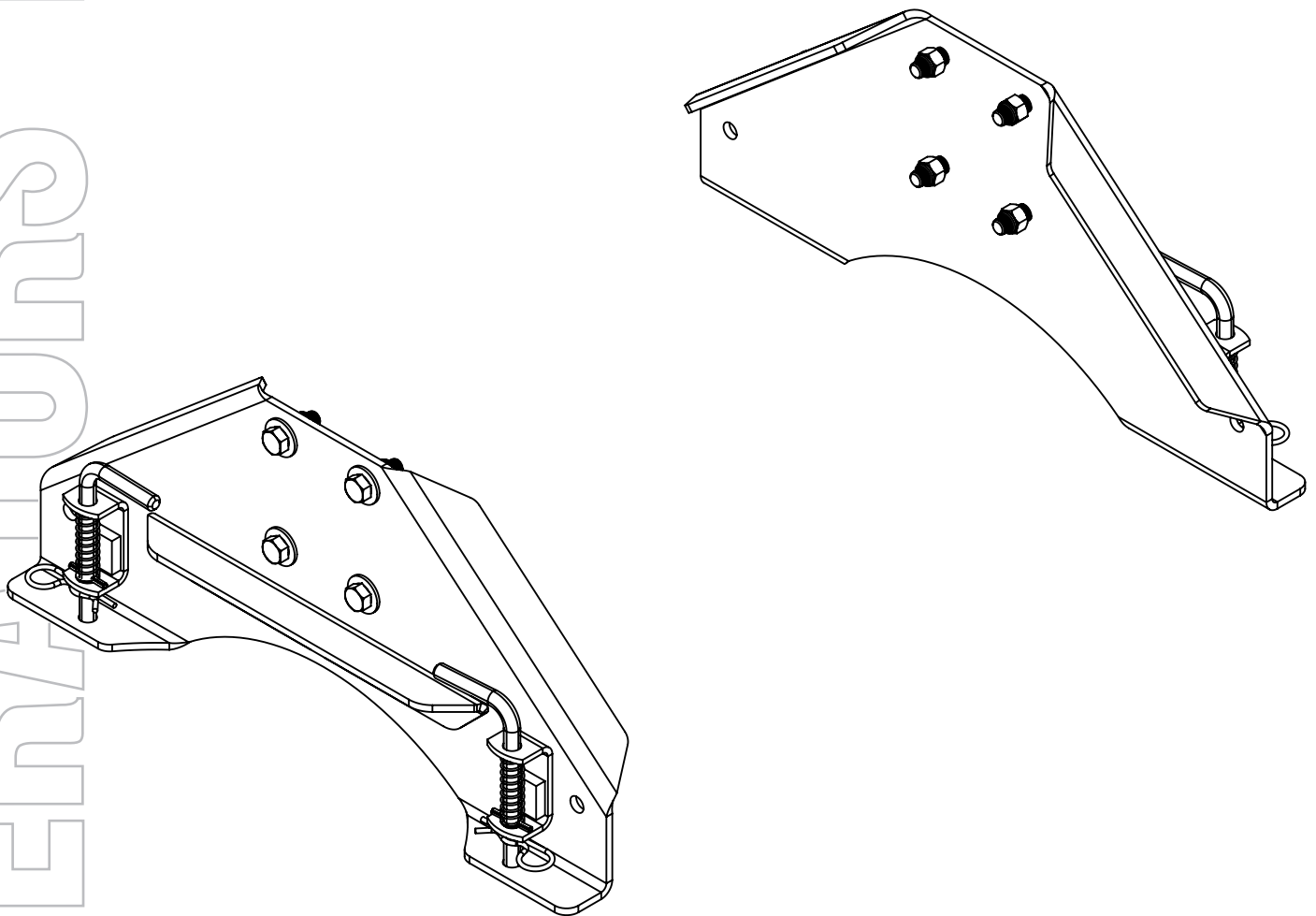


6/14
HJ25987 Rev 1



5th Wheel Side Rail Assemblies

5987 SL SIDE RAIL



READ *complete manual CAREFULLY
BEFORE attempting operation.*

Doing Our Best to Provide You the Best

Table of Contents

Torque Specifications	2
Warranty Policy & Product Registration.....	2
5987 Rail Parts Breakdown	2
Installation Instructions & SL Hitch Operation Instructions	3-4

WARRANTY POLICY, OPERATOR MANUALS & REGISTRATION

Go online to www.demco-products.com to review Demco warranty policies, operator manuals and register your Demco product.

! Torque Specifications

BOLT TORQUE DATA FOR STANDARD NUTS, BOLTS, AND CAPSCREWS.

Tighten all bolts to torques specified in chart unless otherwise noted. Check tightness of bolts periodically, using bolt chart as guide. Replace hardware with same grade bolt.

NOTE: Unless otherwise specified, high-strength Grade 5 hex bolts are used throughout assembly of equipment.

Torque figures indicated are valid for non-greased or non-oiled threads and heads unless otherwise specified. Therefore, do not grease or oil bolts or capscrews unless otherwise specified in this manual. When using locking elements, increase torque values by 5%.

* GRADE or CLASS value for bolts and capscrews are identified by their head markings.

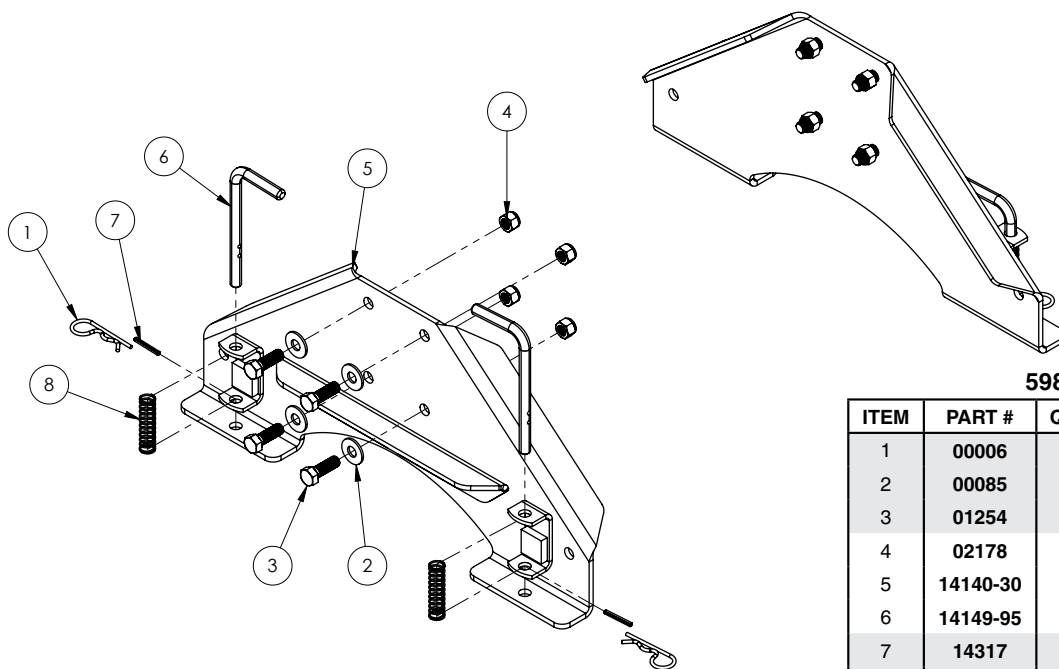
Bolt Torque for Standard bolts *

"A"	GRADE 2		GRADE 5		GRADE 8	
	lb-ft	(N.m)	lb-ft	(N.m)	lb-ft	(N.m)
1/4"	6	(8)	9	(12)	12	(16)
5/16"	10	(13)	18	(25)	25	(35)
3/8"	20	(27)	30	(40)	45	(60)
7/16"	30	(40)	50	(70)	80	(110)
1/2"	45	(60)	75	(100)	115	(155)
9/16"	70	(95)	115	(155)	165	(220)
5/8"	95	(130)	150	(200)	225	(300)
3/4"	165	(225)	290	(390)	400	(540)
7/8"	170	(230)	420	(570)	650	(880)
1"	225	(300)	630	(850)	970	(1310)

Bolt Torque for Metric bolts *

"A"	CLASS 8.8		CLASS 9.8		CLASS 10.9	
	lb-ft	(N.m)	lb-ft	(N.m)	lb-ft	(N.m)
6	9	(13)	10	(14)	13	(17)
7	15	(21)	18	(24)	21	(29)
8	23	(31)	25	(34)	31	(42)
10	45	(61)	50	(68)	61	(83)
12	78	(106)	88	(118)	106	(144)
14	125	(169)	140	(189)	170	(230)
16	194	(263)	216	(293)	263	(357)
18	268	(363)	--	--	364	(493)
20	378	(513)	--	--	515	(689)
22	516	(699)	--	--	702	(952)
24	654	(886)	--	--	890	(1206)

5987 Parts Breakdown



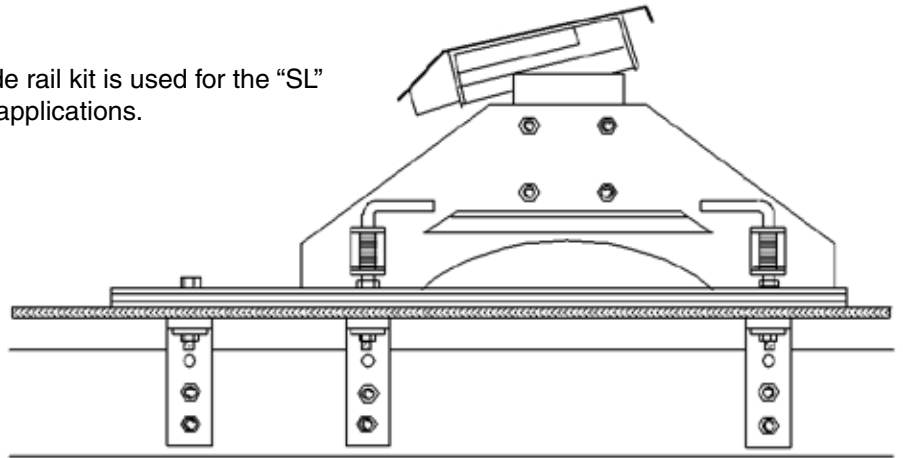
5987 Parts Breakdown

ITEM	PART #	QTY	DESCRIPTION
1	00006	4	HAIR PIN .148 WIRE X 3.06
2	00085	8	.50 FLAT WASHER
3	01254	8	BOLT, .50 NC X 1.50 GR.5 HEX
4	02178	8	NUT, .50NC LOCK, NY. INSERT
5	14140-30	2	5TH WHEEL SL SIDE RAIL
6	14149-95	4	SL PULL PIN
7	14317	4	PIN, ROLL, .188 X 1.50
8	14318	4	LATCH SPRING

Please order replacement parts by **PART NO.** and **DESCRIPTION.**

5987 Installation Instructions

The 5987 SL side rail kit is used for the "SL" 5th wheel hitch applications.



1. The correct height for the hitch is such that there is approximately 6" of clearance between the top of the truck box and the bottom of the trailer overhang. All Hijacker hitches have 4" of adjustment up or down in 1" increments.
2. Once the proper height has been determined, bolt the hitch saddle and side rail assemblies together and pin them into the bed rails. Pin the side rails into the set of holes closest to the end with the tab welded on it. This is the end of the bed rail that is mounted closest to the cab of the truck.
3. The ideal location for the center of the hitch is directly over the axle to up to 3" ahead of it, and it must be centered side to side in the box of the truck. As noted above, specific install instructions for the different vehicles are available.
4. When hitch and rail assembly are in the proper position, drill either the # 1 or # 2 hole (which ever the specific install instruction states to use) on one side first. Note that the # 1 hole is the hole closest to the cab of the truck and hole # 6 is closest to the tailgate. Drop in a 1/2" x 3" bolt (with flat washer) and loosely fasten a frame bracket up under the box with a square washer and 1/2" lock nut. Repeat this on the other bed rail. After the ends of the bed rails closest to the cab have been drilled and bolts dropped down thru, lift all four spring loaded lock pins up and turn to keep held up and slide the side rail assembly back toward the tailgate and lock into the rear set of holes. Drill either the # 5 or # 6 holes or the holes closest to the tailgate that are stated in the truck specific install instructions and drop a bolt and flat washer thru and repeat on the other side. Loosely fasten frame bracket and square washers onto the bolts under truck bed. Slide the hitch assembly back and forth in the bed rails to ensure smooth operation. Now proceed to drill at least one more hole per side in between the forward and rear bolts. And fasten frame brackets.
5. Securely fasten the frame brackets underneath by pushing them up against the frame and tightening up the nut. Next drill two holes thru the frame and use the 1/2" x 1 1/2" bolts, nuts, and flat washers to secure the brackets to the frame.

SL Hitch Operation Instructions

The Hijacker "SL" fifth wheel assembly allows you to move your hitch back towards the tailgate of the truck in two increments of 4" each for a total of 8". This gives more clearance for the trailer to help make maneuvering the trailer (in reverse) easier for short box trucks.

Important Note: Never tow trailer in maneuvering position. Always tow with hitch pinned into the set of holes in the base rail that position the hitch above or slightly ahead of the axle. Never try to slide hitch back while coupled to trailer with SL model hitch.

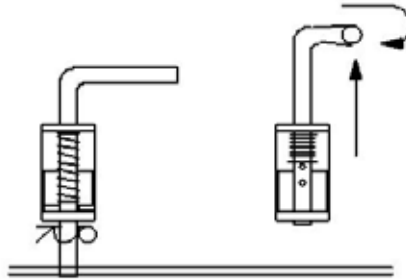
To slide the hitch assembly from the towing position to the parking position, use the following procedure:

1. Place truck in park. Chock trailer wheels and lower trailer legs to raise trailer to proper height for uncoupling. Disconnect cables and uncouple trailer from hitch as per uncoupling instructions.
2. Pull the truck ahead far enough to move hitch (approximately 24").
3. Get up in truck box and unclip the 4 hitch pins that are inserted into the spring loaded locking pins.
4. Pull up the 4 pins all the way and turn the pin 90° to lock in the up position.
5. Slide the hitch back towards the tailgate of the truck and position over the set of holes you would like to use for extra clearance
6. Turn the pins back 90° and the spring pressure will drop them down into the holes in the base rails.

1. Make sure that the pins are completely engaged in the holes as far as they can go.
2. Insert the hitch pins into the holes in the spring loaded pins, under the spring bracket, to lock them into position.
3. Return to cab of truck and recouple the trailer following the coupling instructions. Refasten trailer cables.
4. The trailer is now ready to maneuver into position with sufficient cab clearance.

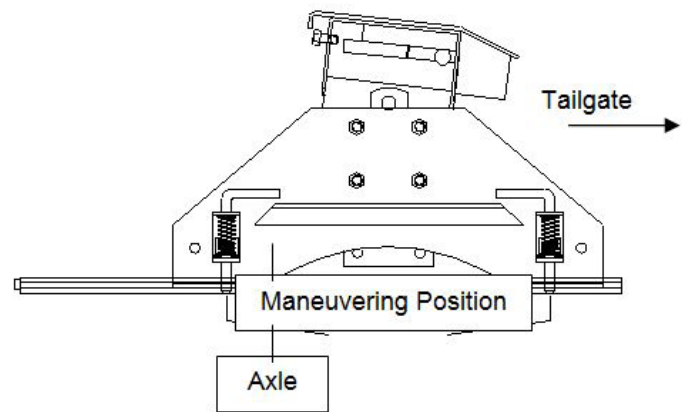
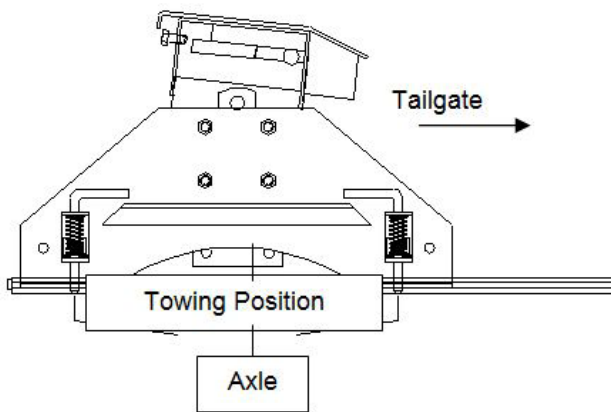
To Lock in Place:

1. Line spring pin up over holes in bed rail.
2. Turn handle to release.
3. Make sure pin is down all the way.
4. Install hitch pin to lock.



To Move Side Rails:

1. Remove hitch pin.
2. Lift up on handle.
3. Turn to keep handle in up position.



Demco

4010 320th St., BOYDEN, IA. 51234
 PH: (712) 725-2311
 FAX: (712) 725-2380
 TOLL FREE: 1-800-54DEMCO (1-800-543-3626)
www.demco-products.com

Go online to www.demco-products.com for Demco warranty policies, operator manuals & product registration.