

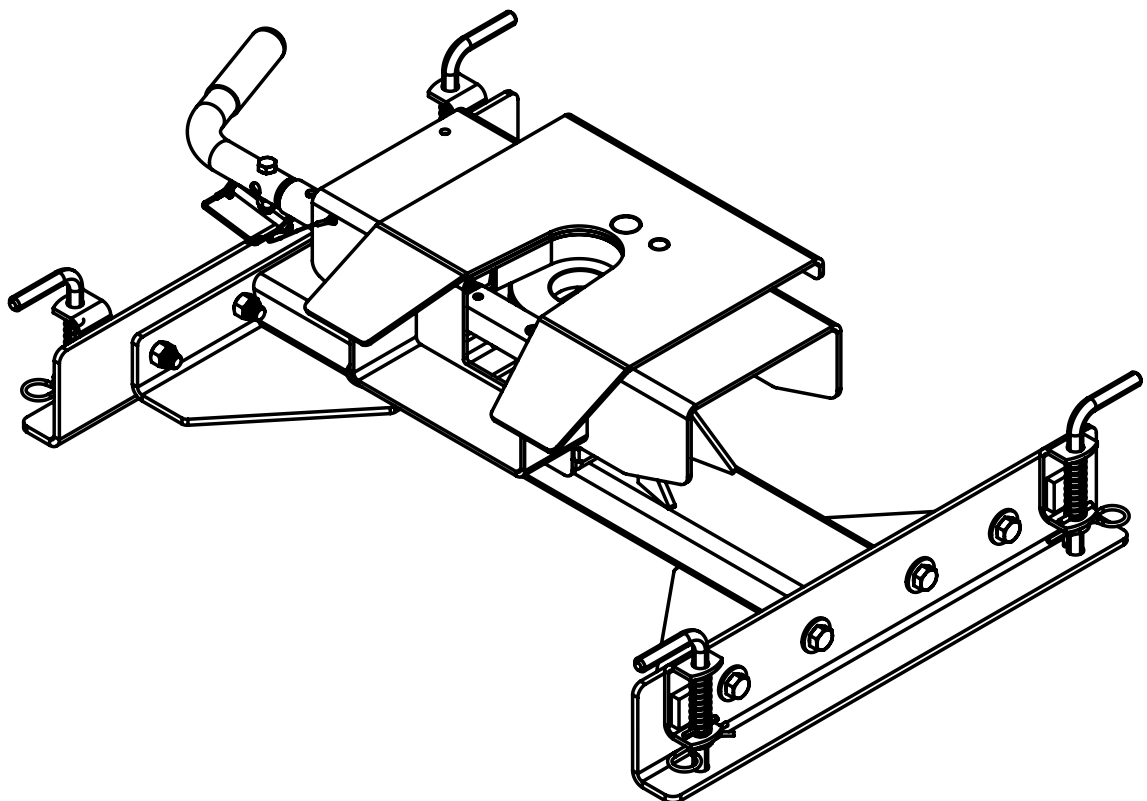
MANUAL
OPERATORS



6/14
HJ25993 rev 1



5th Wheel SL Series 21K Flat Deck 5993



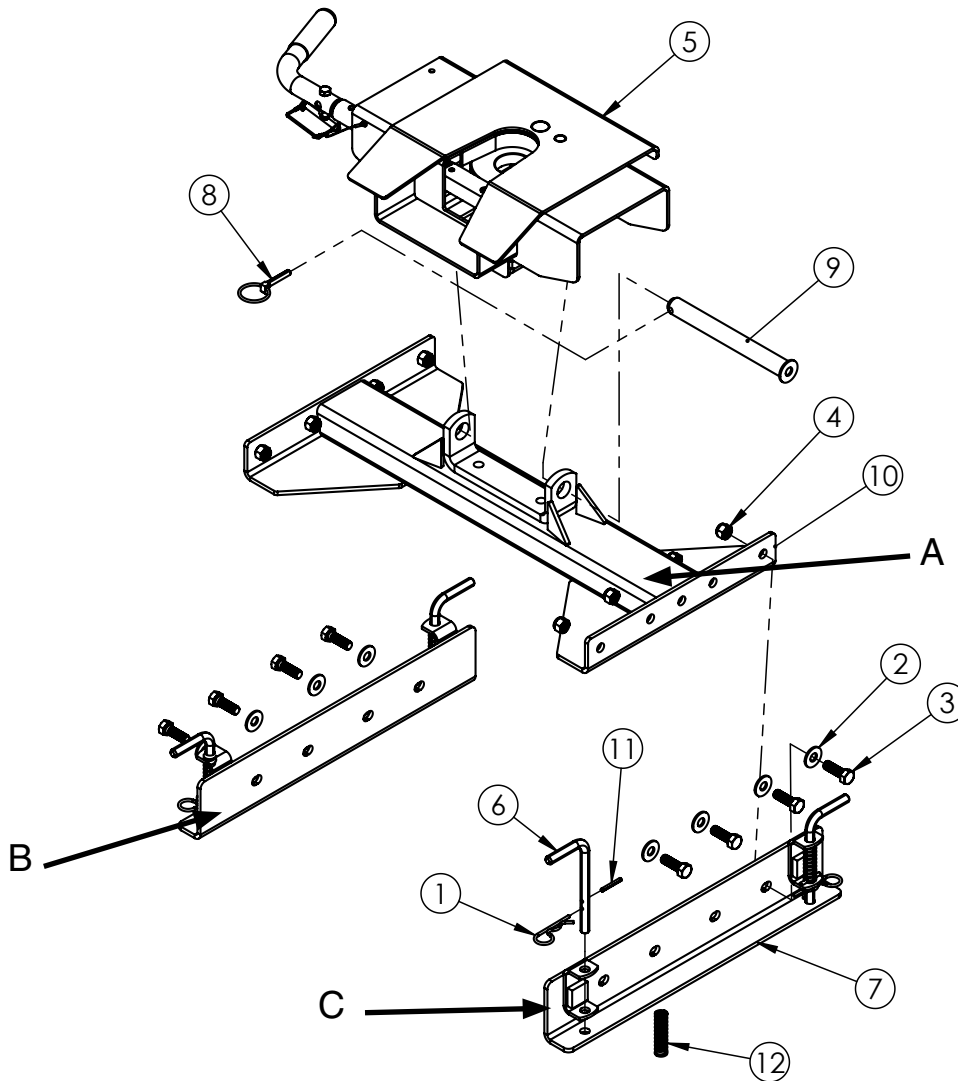
READ *complete manual CAREFULLY
BEFORE attempting operation.*

Doing Our Best to Provide You the Best

WARRANTY POLICY & REGISTRATION

Go online to www.demco-products.com to review Demco warranty policies and register your Demco product.

5993 Parts Breakdown



ITEM	PART #	QTY	DESCRIPTION
1	00006	4	HAIR PIN .148 WIRE X 3.06
2	00085	8	.50 FLAT WASHER
3	01254	8	BOLT, .50 NC X 1.50 GR.5 HEX
4	02178	8	NUT, .50NC LOCK, NY. INSERT
5	6076	1	5TH WHEEL HEAD ASSEMBLY
6	14149-95	4	SL PULL PIN
7	14208-76	2	GN SL SIDE RAILS
8	14221	1	.313 LYNCH PIN
9	14222-95	1	AS PIVOT PIN 1" X 9.38
10	14280	1	SL FLAT DECK 5TH WHEEL
11	14317	4	ROLL PIN .188 X 1.50
12	14318	4	SPRING COMPRESS .063 WIRE X .72 OD X 2.75 FL

Please order replacement parts by PART NO. and DESCRIPTION.

5993 SL Series 21K Flat Deck Assembly Instructions

The flat deck slider 5th wheel hitch is easy to assemble and install. The general instructions for the base rail installation are in with the bedrail kit.

1. Loosely bolt side plates 14208-76 (B) & (C) onto the main body of 5993 (A).
2. Assemble and tighten bolts while unit is sitting on a flat & level surface.
3. Insert into base rails, position in truck bed and mount as per instructions in bedrail kit.
4. Attach 6076 hitch head to cross member. You are ready to travel.

Torque Specifications

BOLT TORQUE DATA FOR STANDARD NUTS, BOLTS, AND CAPSCREWS.

Tighten all bolts to torques specified in chart unless otherwise noted. Check tightness of bolts periodically, using bolt chart as guide. Replace hardware with same grade bolt.

NOTE: Unless otherwise specified, high-strength Grade 5 hex bolts are used throughout assembly of equipment.

Torque figures indicated are valid for non-greased or non-oiled threads and heads unless otherwise specified. Therefore, do not grease or oil bolts or capscrews unless otherwise specified in this manual. When using locking elements, increase torque values by 5%.

* GRADE or CLASS value for bolts and capscrews are identified by their head markings.

Bolt Torque for Standard bolts *

"A"	GRADE 2		GRADE 5		GRADE 8	
	lb-ft	(N.m)	lb-ft	(N.m)	lb-ft	(N.m)
1/4"	6	(8)	9	(12)	12	(16)
5/16"	10	(13)	18	(25)	25	(35)
3/8"	20	(27)	30	(40)	45	(60)
7/16"	30	(40)	50	(70)	80	(110)
1/2"	45	(60)	75	(100)	115	(155)
9/16"	70	(95)	115	(155)	165	(220)
5/8"	95	(130)	150	(200)	225	(300)
3/4"	165	(225)	290	(390)	400	(540)
7/8"	170	(230)	420	(570)	650	(880)
1"	225	(300)	630	(850)	970	(1310)

Bolt Torque for Metric bolts *

"A"	CLASS 8.8		CLASS 9.8		CLASS 10.9	
	lb-ft	(N.m)	lb-ft	(N.m)	lb-ft	(N.m)
6	9	(13)	10	(14)	13	(17)
7	15	(21)	18	(24)	21	(29)
8	23	(31)	25	(34)	31	(42)
10	45	(61)	50	(68)	61	(83)
12	78	(106)	88	(118)	106	(144)
14	125	(169)	140	(189)	170	(230)
16	194	(263)	216	(293)	263	(357)
18	268	(363)	--	--	364	(493)
20	378	(513)	--	--	515	(689)
22	516	(699)	--	--	702	(952)
24	654	(886)	--	--	890	(1206)



P.O. BOX 189
4010 320th St., BOYDEN, IA. 51234
PH: (712) 725-2311
FAX: (712) 725-2380
TOLL FREE: 1-800-54DEMCO (1-800-543-3626)
www.demco-products.com

**Go online to www.demco-products.com for Demco
warranty policies & product registration.**