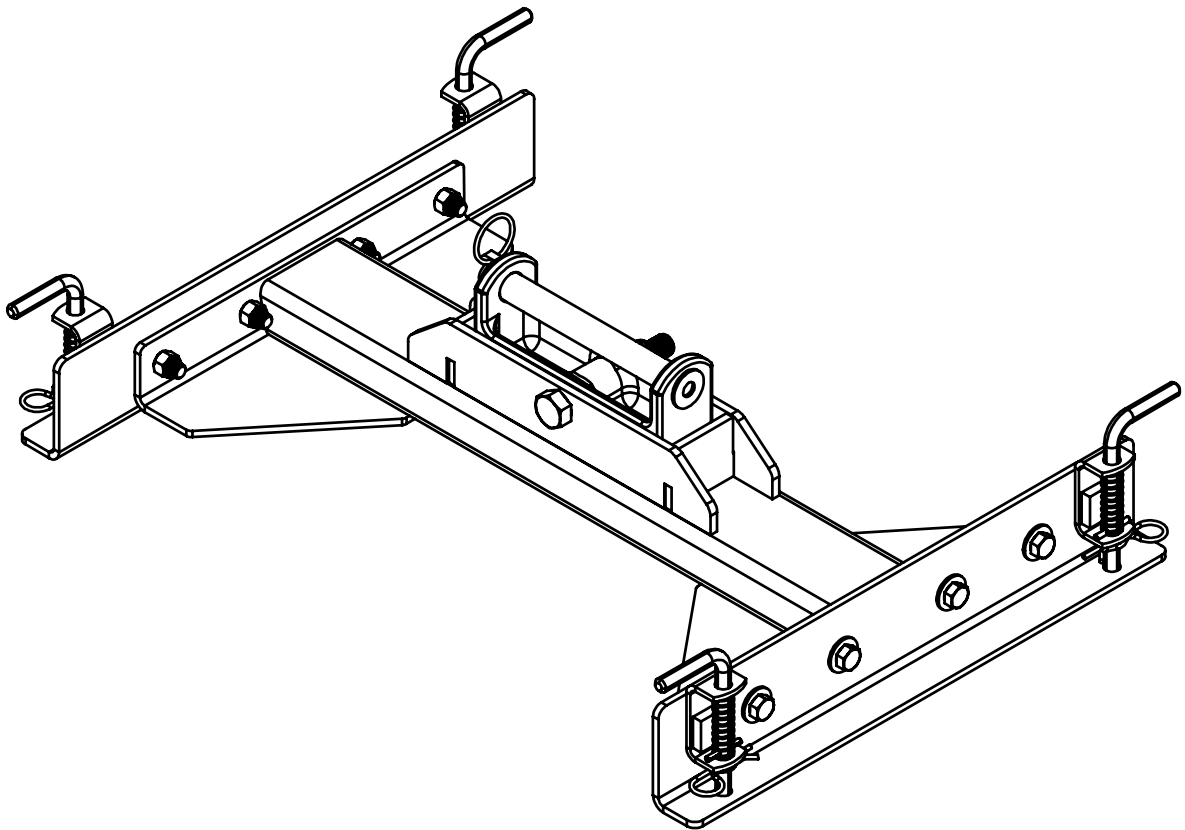




Doing Our Best to Provide You the Best

HJ26148, Rev 2
11/16

5TH WHEEL SL SERIES #6148
21K DP Flat Deck

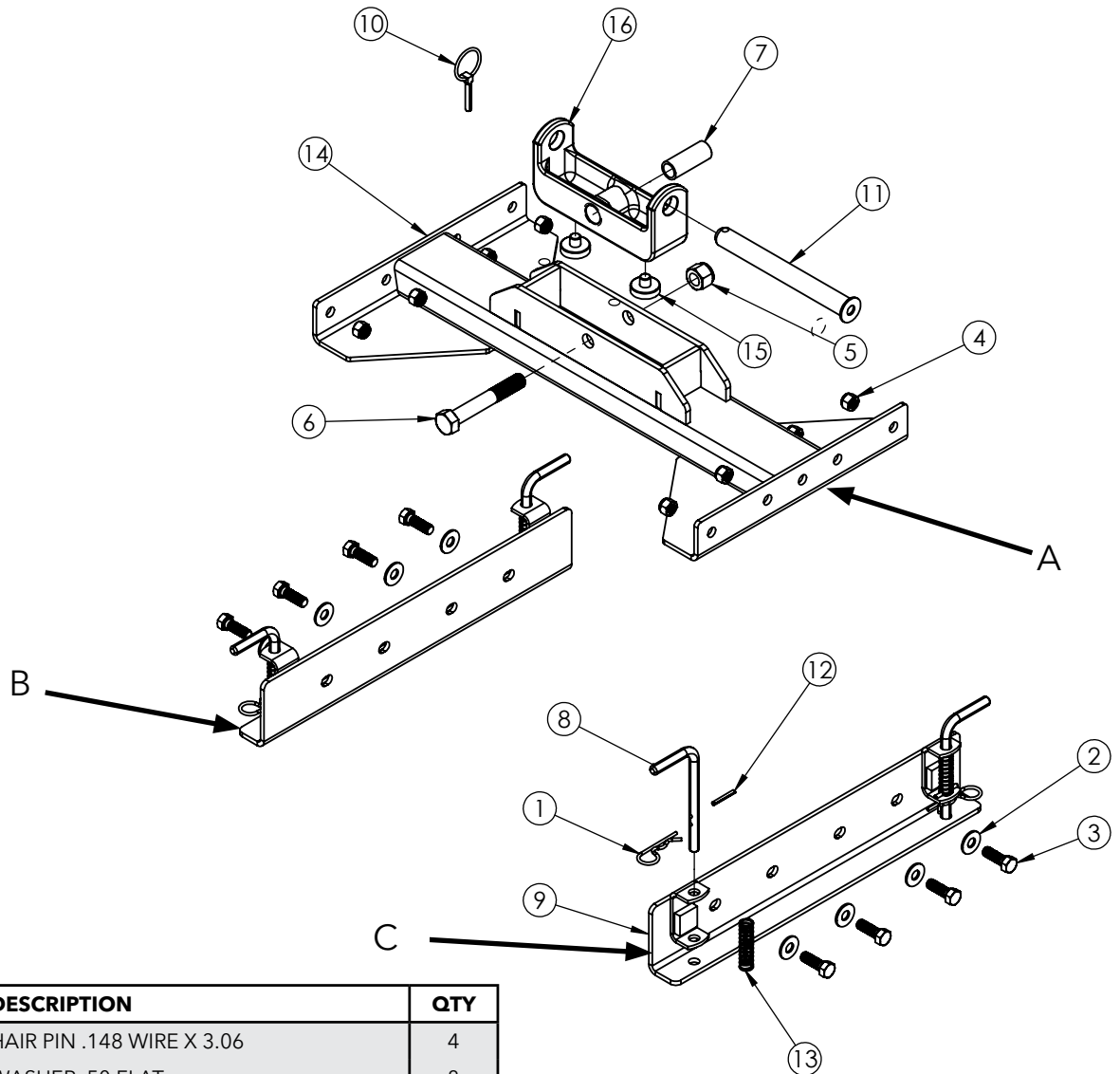


OPERATOR MANUAL

Parts Breakdown

WARRANTY POLICY, OPERATOR MANUALS & REGISTRATION

Go online to www.demco-products.com to review Demco warranty policies, operator manuals and register your Demco product.



ITEM	PART #	DESCRIPTION	QTY
1	00006	HAIR PIN .148 WIRE X 3.06	4
2	00085	WASHER .50 FLAT	8
3	01254	BOLT .50NC X 1.50 GR5 HEX	8
4	02178	NUT .50NC LOCK NY. INSERT	8
5	02961	NUT .75NC LOCK NY. INSERT	1
6	11099	BOLT .75NC X 5.00 GR8 HEX	1
7	11337	HINGE BUSHING	1
8	14149-95	SL PULL PIN	4
9	14208-76	GN SL SIDE RAIL	2
10	14221	LUNCH PIN .313	1
11	14222-95	AS PIVOT PIN 1 X 9.38	1
12	14317	PIN ROLL .188 X 1.50	4
13	14318	SPRING COMPRESS	4
14	15509-76	SL FLAT DECK DP 5TH WHEEL	1
15	15769	URETHANE BUMPER	2
16	15778	5TH WHEEL HEAD YOKE	1

Please order replacement parts by **PART NO.** and **DESCRIPTION**

6148 SL Series 21K Double Pivot Flat Deck Assembly & Torque Specifications

The flat deck slider 5th wheel hitch is easy to assemble and install. The general instructions for the base rail installation are in with the bedrail kit.

1. Loosely bolt side plates 14208-76 (B) & (C) onto the main body of 6148 (A).
2. Assemble and tighten bolts while unit is sitting on a flat & level surface.
3. Insert into base rails, position in truck bed and mount as per instructions in bedrail kit.
4. Attach 6076 hitch head to cross member. You are ready to travel.

 **Torque Specifications**

BOLT TORQUE DATA FOR STANDARD NUTS, BOLTS, AND CAP-SCREWS.

Tighten all bolts to torques specified in chart unless otherwise noted. Check tightness of bolts periodically, using bolt chart as guide. Replace hardware with same grade bolt.

NOTE: Unless otherwise specified, high-strength Grade 5 hex bolts are used throughout assembly of equipment.

Torque figures indicated are valid for non-greased or non-oiled threads and heads unless otherwise specified. Therefore, do not grease or oil bolts or capscrews unless otherwise specified in this manual. When using locking elements, increase torque values by 5%.

* GRADE or CLASS value for bolts and capscrews are identified by their head markings.

Bolt Torque for Standard bolts *

"A"	GRADE 2		GRADE 5		GRADE 8	
	lb-ft	(N.m)	lb-ft	(N.m)	lb-ft	(N.m)
1/4"	6	(8)	9	(12)	12	(16)
5/16"	10	(13)	18	(25)	25	(35)
3/8"	20	(27)	30	(40)	45	(60)
7/16"	30	(40)	50	(70)	80	(110)
1/2"	45	(60)	75	(100)	115	(155)
9/16"	70	(95)	115	(155)	165	(220)
5/8"	95	(130)	150	(200)	225	(300)
3/4"	165	(225)	290	(390)	400	(540)
7/8"	170	(230)	420	(570)	650	(880)
1"	225	(300)	630	(850)	970	(1310)

Bolt Torque for Metric bolts *

"A"	CLASS 8.8		CLASS 9.8		CLASS 10.9	
	lb-ft	(N.m)	lb-ft	(N.m)	lb-ft	(N.m)
6	9	(13)	10	(14)	13	(17)
7	15	(21)	18	(24)	21	(29)
8	23	(31)	25	(34)	31	(42)
10	45	(61)	50	(68)	61	(83)
12	78	(106)	88	(118)	106	(144)
14	125	(169)	140	(189)	170	(230)
16	194	(263)	216	(293)	263	(357)
18	268	(363)	--	--	364	(493)
20	378	(513)	--	--	515	(689)
22	516	(699)	--	--	702	(952)
24	654	(886)	--	--	890	(1206)

DEMCO

4010 320th St., Boyden, IA. 51234

Phone: (712) 725-2311

Fax: (712) 725-2380

Toll Free: 1-800-54DEMCO (1-800-543-3626)

**Demco warranty policies, operator manuals, and product registration
can be found online:**

www.demco-products.com

