



*Doing Our Best to Provide You the Best*

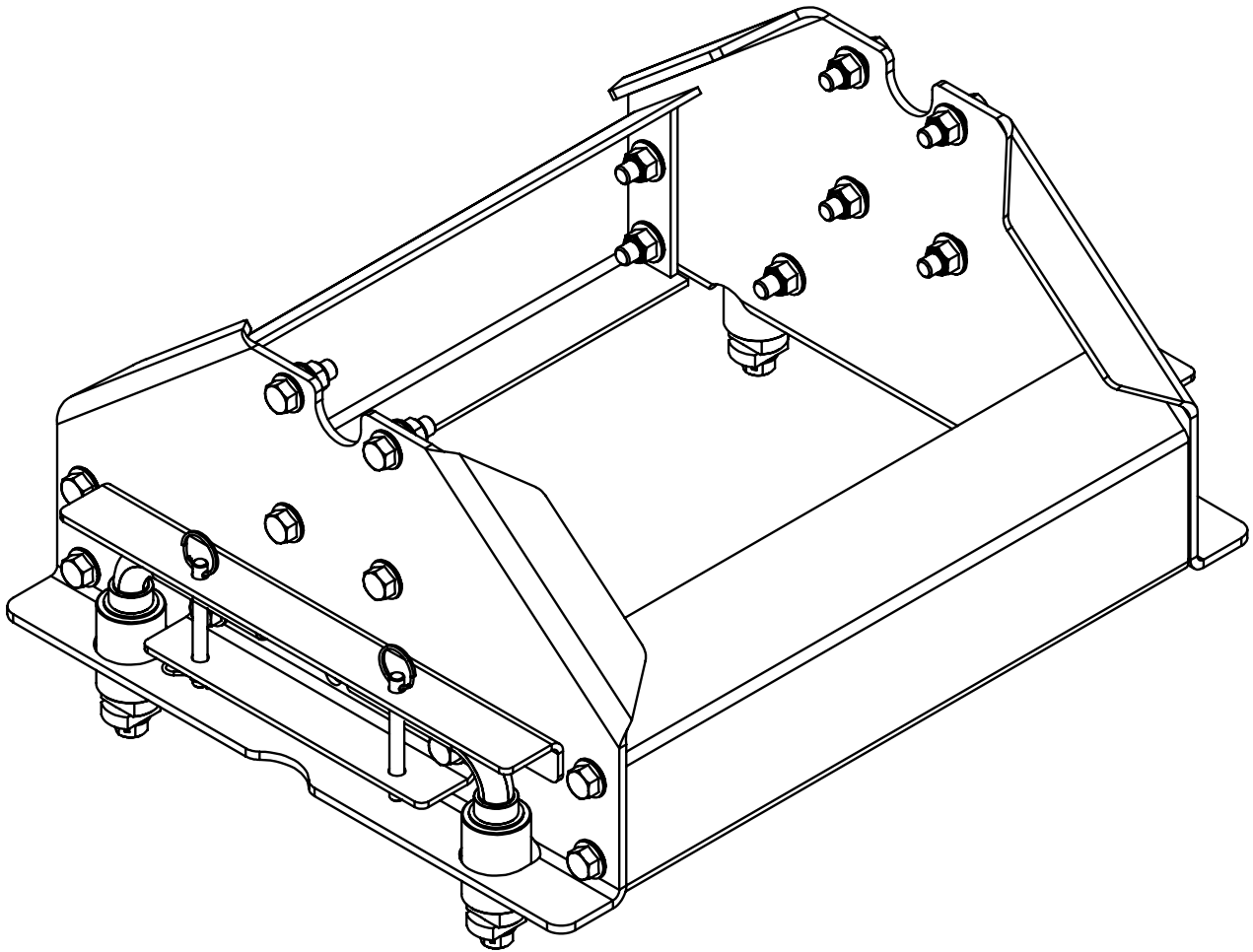
HJ26332, Rev 0  
08/19

---

## 5TH WHEEL SIDE RAIL ASSEMBLIES

### 6332 Chevrolet/GMC UMS Side Rail

---



**OPERATOR MANUAL**

## WARRANTY POLICY, OPERATOR MANUALS, PARTS MANUALS & REGISTRATION

Go online to [www.demco-products.com](http://www.demco-products.com) to review Demco warranty policies, operator manuals and register your Demco product.



### **Torque Specifications**

#### **BOLT TORQUE DATA FOR STANDARD NUTS, BOLTS, AND CAP-SCREWS.**

Tighten all bolts to torques specified in chart unless otherwise noted. Check tightness of bolts periodically, using bolt chart as guide. Replace hardware with same grade bolt.

NOTE: Unless otherwise specified, high-strength Grade 5 hex bolts are used throughout assembly of equipment.

Torque figures indicated are valid for non-greased or non-oiled threads and heads unless otherwise specified. Therefore, do not grease or oil bolts or capscrews unless otherwise specified in this manual. When using locking elements, increase torque values by 5%.

\* GRADE or CLASS value for bolts and capscrews are identified by their head markings.

**Bolt Torque for Standard bolts \***

"A"	GRADE 2		GRADE 5		GRADE 8	
	lb-ft	(N.m)	lb-ft	(N.m)	lb-ft	(N.m)
1/4"	6	(8)	9	(12)	12	(16)
5/16"	10	(13)	18	(25)	25	(35)
3/8"	20	(27)	30	(40)	45	(60)
7/16"	30	(40)	50	(70)	80	(110)
1/2"	45	(60)	75	(100)	115	(155)
9/16"	70	(95)	115	(155)	165	(220)
5/8"	95	(130)	150	(200)	225	(300)
3/4"	165	(225)	290	(390)	400	(540)
7/8"	170	(230)	420	(570)	650	(880)
1"	225	(300)	630	(850)	970	(1310)

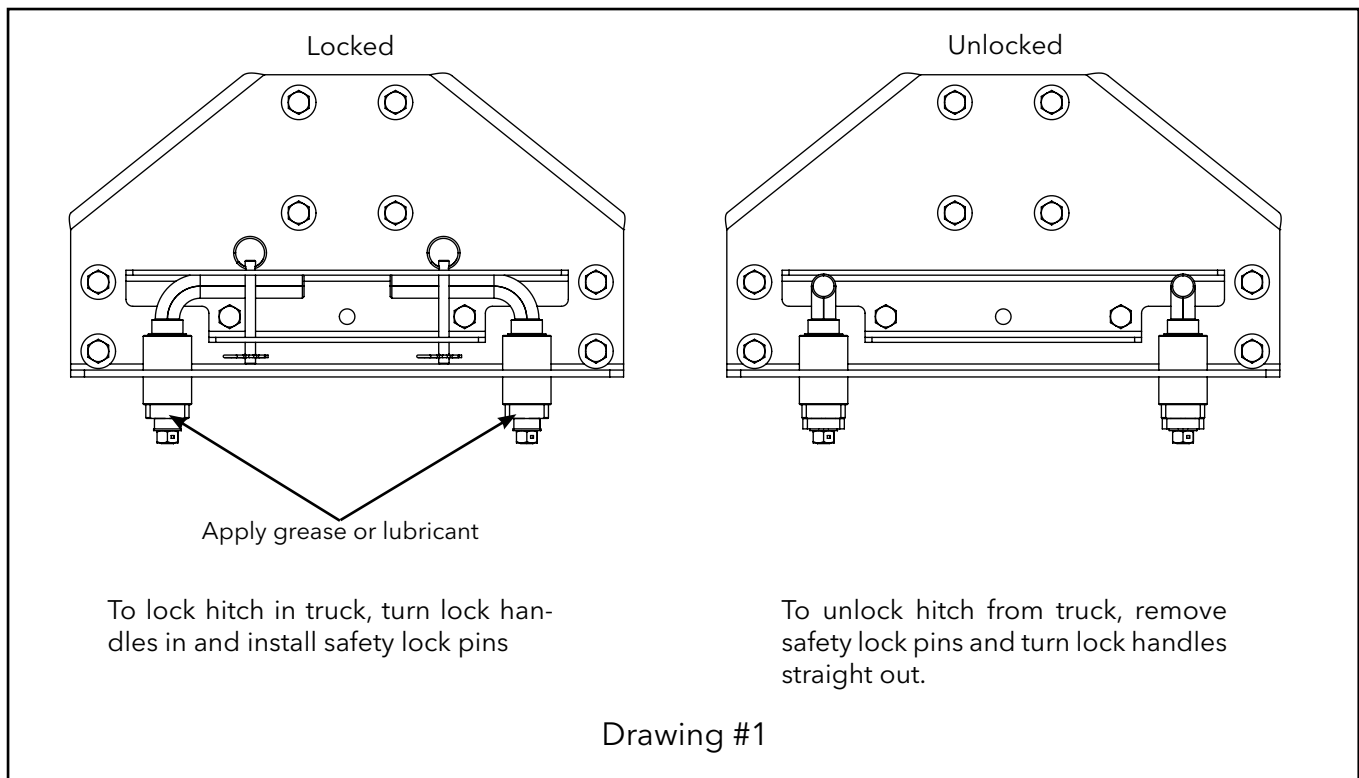
**Bolt Torque for Metric bolts \***

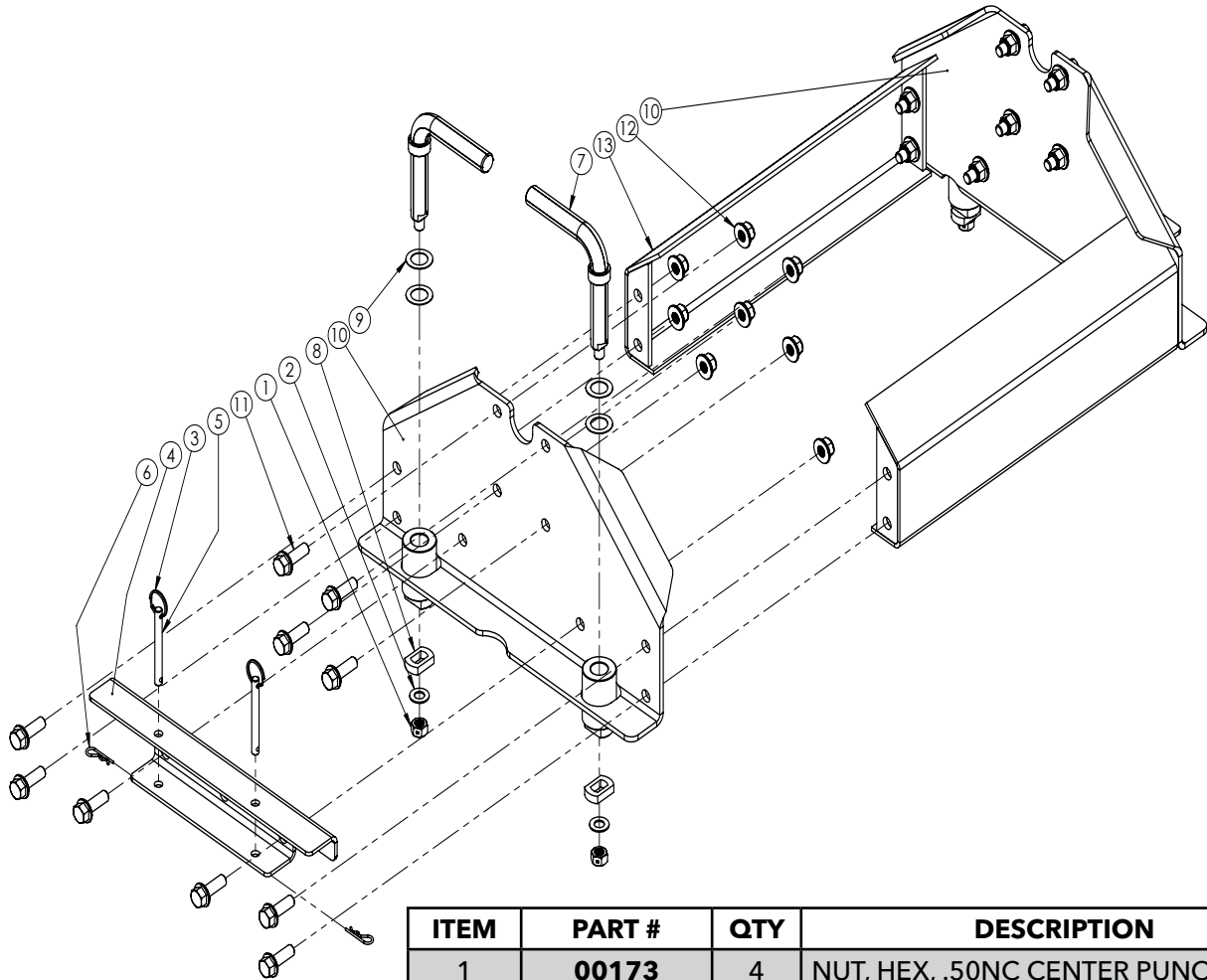
"A"	CLASS 8.8		CLASS 9.8		CLASS 10.9	
	lb-ft	(N.m)	lb-ft	(N.m)	lb-ft	(N.m)
6	9	(13)	10	(14)	13	(17)
7	15	(21)	18	(24)	21	(29)
8	23	(31)	25	(34)	31	(42)
10	45	(61)	50	(68)	61	(83)
12	78	(106)	88	(118)	106	(144)
14	125	(169)	140	(189)	170	(230)
16	194	(263)	216	(293)	263	(357)
18	268	(363)	--	--	364	(493)
20	378	(513)	--	--	515	(689)
22	516	(699)	--	--	702	(952)
24	654	(886)	--	--	890	(1206)

## 6332 UMS Side Rail Assembly Instructions

1. Place the side rail plates into the base rail holes in truck box.
2. Loosely bolt the saddle bracket (6331) to the side rails using the 1/2" x 1 1/2" bolts, and nylon lock nuts provided in the 6332 bolt package.
3. Loosely bolt the cross braces to the side rails using only 1/2" x 1 1/2" bolts and nylon lock nuts.
4. Tighten all the bolts.
5. Unlock and remove the hitch assembly from the base rails and put to the side for later.

**IMPORTANT NOTE:** Apply a little grease or lubricant to the part of the pins that insert into the base rails to help maintain smooth operation and rotation of pins and to protect from the elements. Turn the pins occasionally to prevent them from seizing.





ITEM	PART #	QTY	DESCRIPTION
1	<b>00173</b>	4	NUT, HEX, .50NC CENTER PUNCH
2	<b>02384</b>	4	.50 X 14GA MACHINE WASHER
3	<b>07225</b>	4	SPLIT RING
4	<b>14262-76</b>	2	UMS SIDE RAIL BRACE
5	<b>14342-95</b>	4	CLEVIS SAFETY PIN
6	<b>14350</b>	4	HAIR PIN, .093 WIRE X 1.63 OL
7	<b>14412-95</b>	4	UMS LOCK PIN ASSEMBLY, REESE
8	<b>14413-95</b>	4	LOCKING TAB
9	<b>14423</b>	8	WASHER SHIM .875 ID X .030 THK
10	<b>14462-76</b>	2	SIDE RAIL
11	<b>16589</b>	20	BOLT, .50NC X 1.50 GR5 HEX FLANGE
12	<b>16590</b>	20	NUT, .50NC LOCK NY. INSERT FLANGE
13	<b>16849-76</b>	2	GM UMS 21K BRACE

**Please order replacement parts by PART NO. and DESCRIPTION.**

# DEMCO

4010 320th St., Boyden, IA. 51234

Phone: (712) 725-2311

Fax: (712) 725-2380

Toll Free: 1-800-54DEMCO (1-800-543-3626)

**Demco warranty policies, operator manuals, and product registration  
can be found online:**

**[www.demco-products.com](http://www.demco-products.com)**

