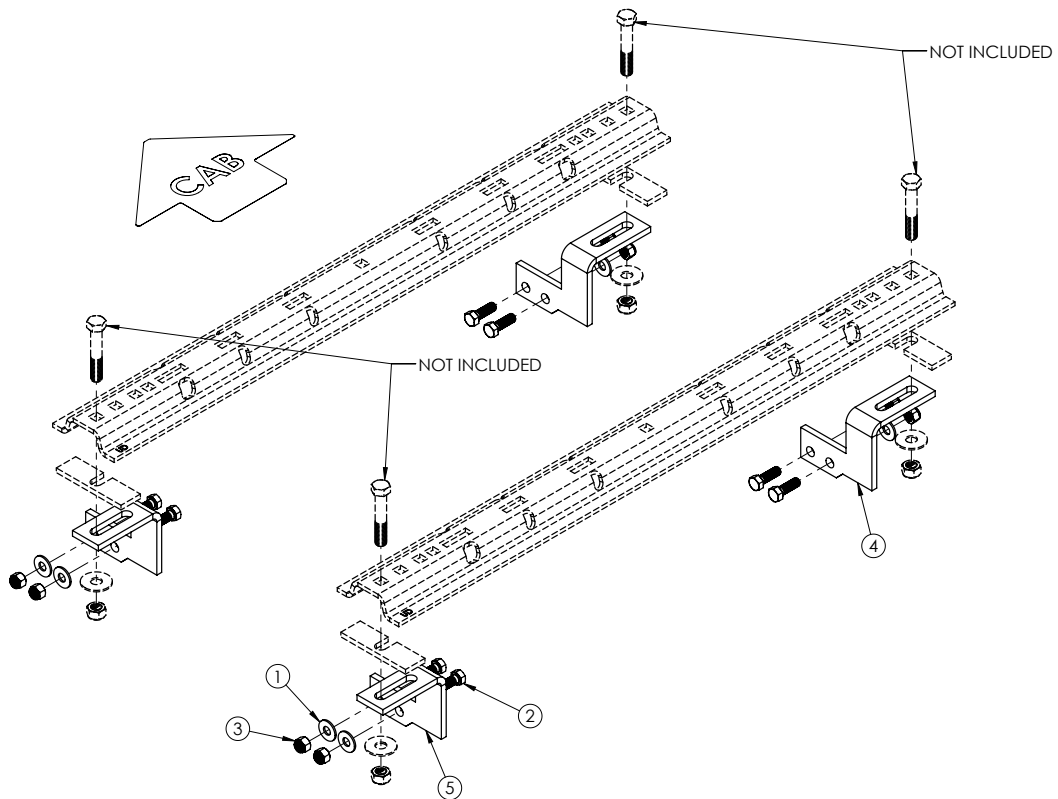


FRAME BRACKET 8552001

Ford F250/F350 "Super Duty" (6-1/2' & 8' Boxes) & Ford F450 "Super Duty" (6-1/2' & 8' Boxes)



ITEM	PART #	QTY	DESCRIPTION
1	00085	8	WASHER, .50 FLAT
2	01254	8	BOLT, .50NC X 1-1/2" HEX GR.5
3	02178	8	NUT, .50 NYLON LOCK
4	14236-76	2	FRAME BRACKET PASSENGER SIDE
5	14237-76	2	FRAME BRACKET DRIVER SIDE

Please order replacement parts by PART NO. and DESCRIPTION.

Installation

8552001 General Assembly & Installation Instructions

WARRANTY POLICY, OPERATOR MANUALS & REGISTRATION

Go online to www.demco-products.com to review Demco warranty policies, operator manuals and register your Demco product.

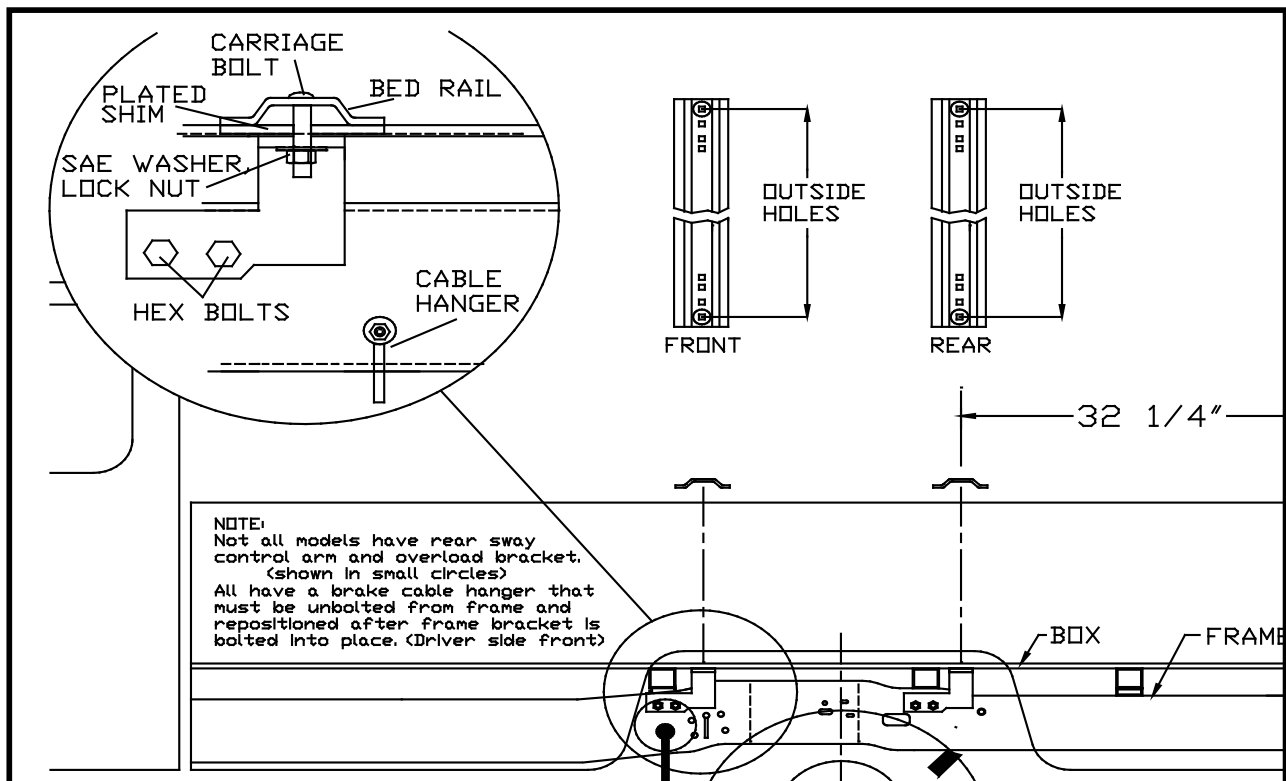
BOLT TORQUE SPECIFICATIONS

STANDARD BOLTS			METRIC BOLTS		
Size	Grade	Torque	Size	Grade	Torque
5/16"	5	18 ft/lbs.	8mm	8.8	23 ft/lbs.
3/8"	5	30 ft/lbs.	10mm	8.8	45 ft/lbs.
7/16"	5	50 ft/lbs.	12mm	8.8	78 ft/lbs.
1/2"	5	75 ft/lbs.	14mm	8.8	125 ft/lbs.
5/8"	5	150 ft/lbs.	16mm	8.8	160 ft/lbs.
3/4"	5	290 ft/lbs.			

CAUTION: Do not install base rails over plastic bed liners. Plastic bed liners must be cut out of the way. Rails may be installed on spray in liners.

NOTE: All metal surfaces that come in contact with the aluminum body need to have vinyl placed in between to prevent corrosion.

NOTE: Consult spray liner installer for recommended curing time.

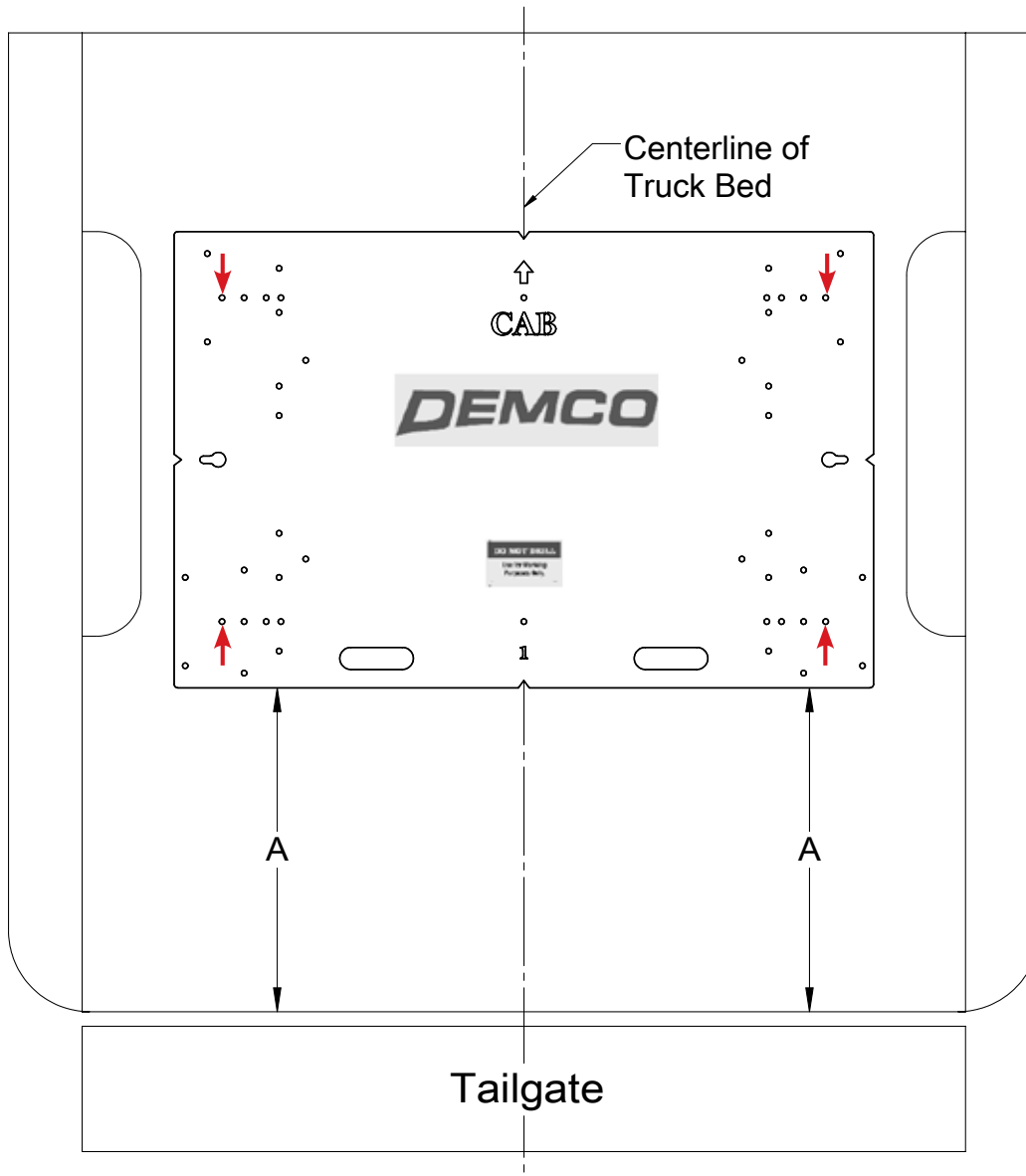


**FORD 2005-2010 F250/F350 "SUPER DUTY" (6-1/2' & 8' BOXES)
2008-2010 F450 "SUPER DUTY" (6-1/2' & 8' BOXES)****INSTALLATION**

1. a. Completely assemble hitch. See GENERAL INSTRUCTIONS and SAFETY supplied.
b. Set hitch into back of truck, center it side to side.
c. Measure 32 1/4" from back edge of truck box to square hole centers in rear bed rail. This will place the hitch 1/2" ahead of the axle.
 2. Check underneath box at bolt hole locations for any obstructions (frame members, etc.).
 3. a. Drill two 5/8" holes thru FRONT BED RAIL, OUTSIDE HOLE POSITION, as shown.
b. Insert two 5/8" x 3 1/2" long hex bolts.
c. Drill two 5/8" holes thru REAR BED RAIL, OUTSIDE HOLE POSITION. Insert two 5/8" x 6" hex bolts.
 4. a. Under box, place frame brackets onto hex bolts (four places).
b. Loosely install 5/8" flat washer, and 5/8" Nylon lock nut.
c. Press each bracket tight against frame member, tighten nuts snug against box.
 5. a. Pilot drill* and drill 1/2" hole into truck frame, at two places thru holes each frame bracket -- BE CAREFUL OF ELECTRIC OR FLUID LINES behind frame members.
b. Fasten brackets with 1/2" x 1 1/2" hex head bolts, 1/2" flat washers, and 1/2" nylon lock nuts.
c. **TIGHTEN ALL BOLTS ACCORDING TO BOLT TORQUE SPECIFICATIONS.**
- * To pilot drill: Use 1/2" drill bit or transfer punch to mark center. Drill thru with 1/4" drill.
-

Truck Bed Drilling Instructions with Template

1. Place the template in the box and center the template between the wheel wells.
2. **IF NEEDED, TAPE THE TEMPLATE DOWN.**
3. Measure from the back of the box to the template on the passengers side and drivers side to insure that the template is square. See **DRAWING #1** and table for measurements.
4. Locate which holes you will be drilling, by the ones marked with a red arrow.
5. Take a 3/8" locating punch and mark the holes to be drilled.
6. **BEFORE YOU DRILL, MAKE SURE THAT THE TEMPLATE DID NOT MOVE, AND THAT THERE ARE NO OBSTRUCTIONS IN THE WAY.**
7. Remove the template and drill the four marked holes with a 5/8" drill bit.
NOTE: A pilot hole may need to be drilled.
8. Deburr each hole.
9. Touch up the bare metal with some paint that matches the box of the truck.



Drawing #1

BOX LENGTH	DIMENSIONS	MEASUREMENT
FORD 2005-2010 F250/F350 "SUPER DUTY"		
6-1/2'	A	*27-3/4"
8'	A	*27-3/4"
FORD 2008-2010 F450 "SUPER DUTY"		
6-1/2'	A	*27-3/4"
8'	A	*27-3/4"
*ALL MEASUREMENTS ARE FROM THE BACK OF THE BOX		

DEMCO

4010 320th St., Boyden, IA. 51234

Phone: (712) 725-2311

Fax: (712) 725-2380

Toll Free: 1-800-54DEMCO (1-800-543-3626)

Demco warranty policies, operator manuals, and product registration
can be found online:

www.demco-products.com

