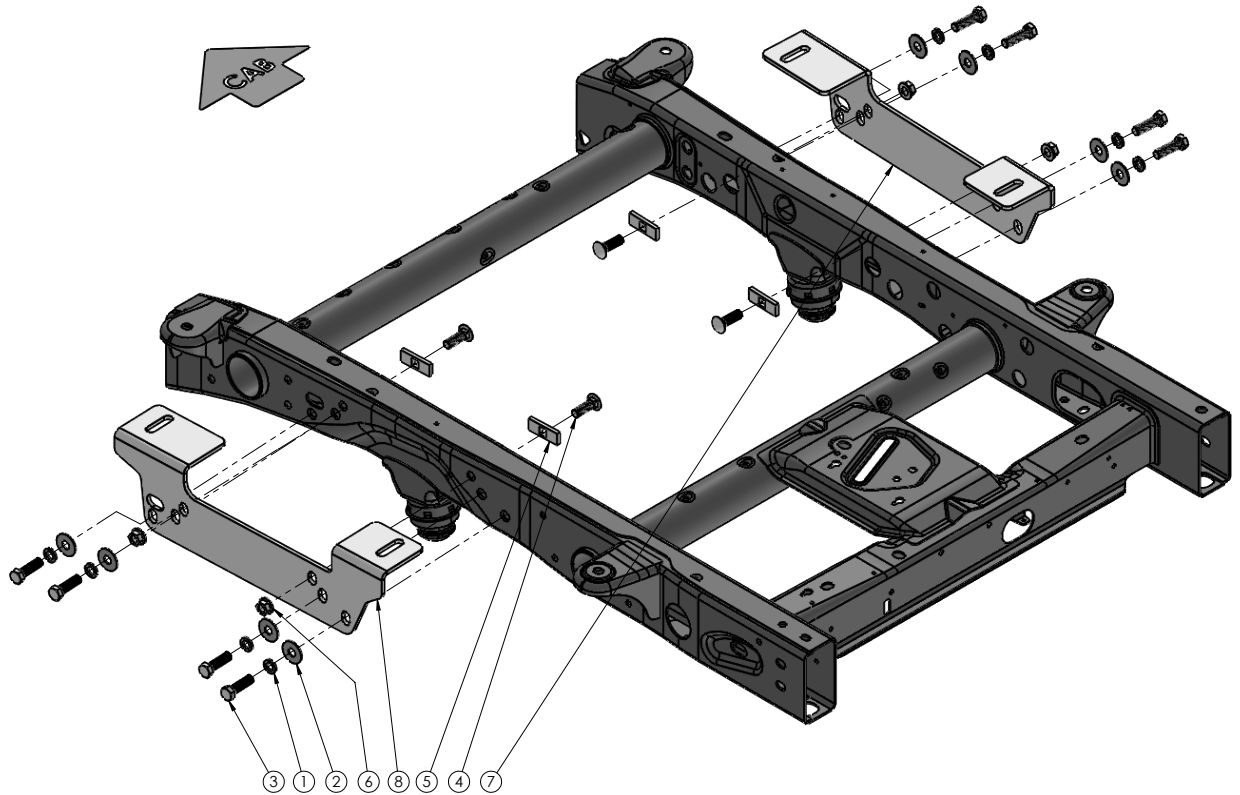


## FRAME BRACKET 8552011

Chevy 2500HD & 3500HD & GMC 2500HD & 3500HD (6-1/2' & 8' Box)



ITEM	PART #	QTY.	DESCRIPTION
1	<b>00248</b>	8	WASHER SPRING LOCK 0.625
2	<b>00477</b>	8	WASHER, FLAT, .625
3	<b>07608</b>	8	BOLT, 16MM - 2.00 x 55MM GR10.9 HEX
4	<b>10572</b>	4	BOLT, .625 X 2.00 GR5 CARRIAGE
5	<b>14158-76</b>	4	CARR. BOLT PLATE
6	<b>14340</b>	4	.625 UNF FLANGED WHEEL NUT
7	<b>14365-76</b>	1	PASS. SIDE FRAME BRACKET
8	<b>14366-76</b>	1	DRIVER SIDE FRAME BRACKET
9	<b>14210</b>	1	.625 FISH WIRE (NOT SHOWN)
10	<b>12329</b>	-	LOCTITE (NOT SHOWN)

Please order replacement parts by **PART NO.** and **DESCRIPTION.**

# Introduction

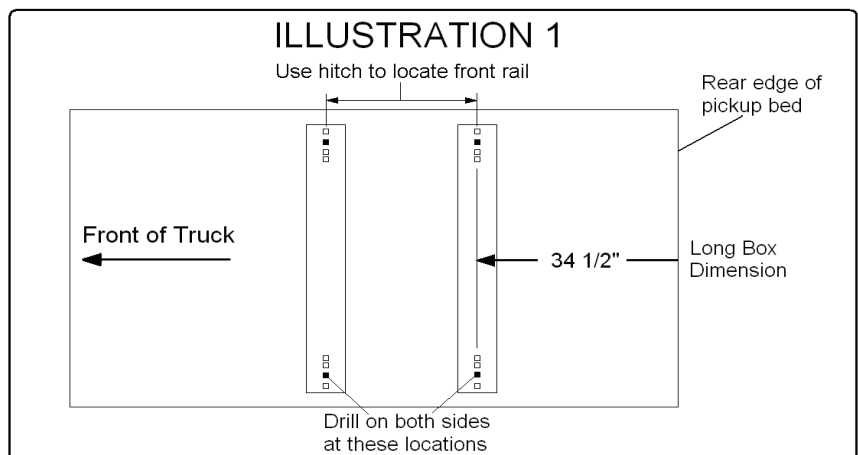
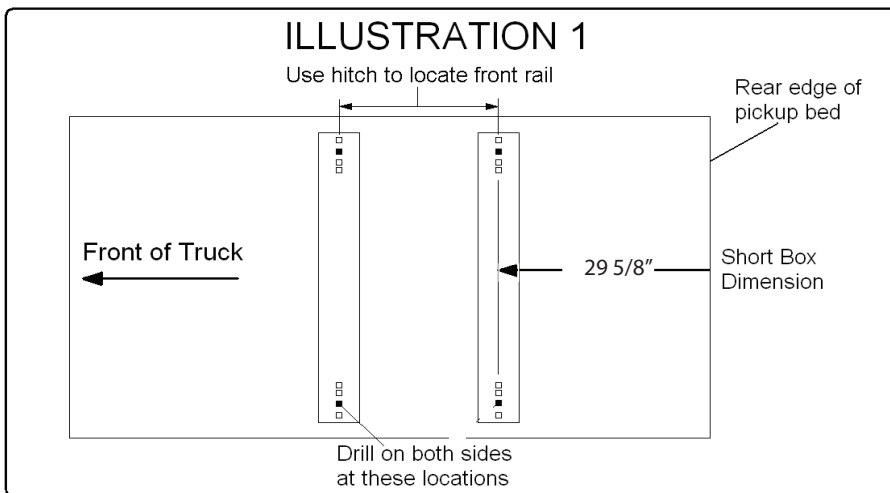
## 8552011 General Assembly & Installation Instructions

### WARRANTY POLICY, OPERATOR MANUALS & REGISTRATION

Go online to [www.demco-products.com](http://www.demco-products.com) to review Demco warranty policies, operator manuals and register your Demco product.

#### BOLT TORQUE SPECIFICATIONS

STANDARD BOLTS			METRIC BOLTS		
Size	Grade	Torque	Size	Grade	Torque
5/16"	5	18 ft/lbs.	8mm	8.8	23 ft/lbs.
3/8"	5	30 ft/lbs.	10mm	8.8	45 ft/lbs.
7/16"	5	50 ft/lbs.	12mm	8.8	78 ft/lbs.
1/2"	5	75 ft/lbs.	14mm	8.8	125 ft/lbs.
5/8"	5	150 ft/lbs.	16mm	8.8	160 ft/lbs.
3/4"	5	290 ft/lbs.			

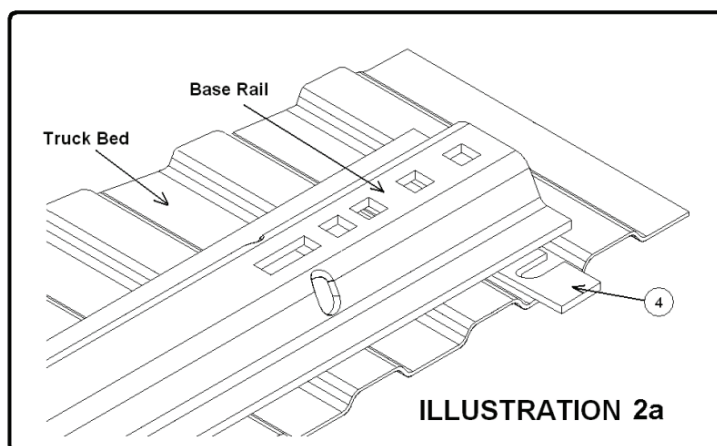
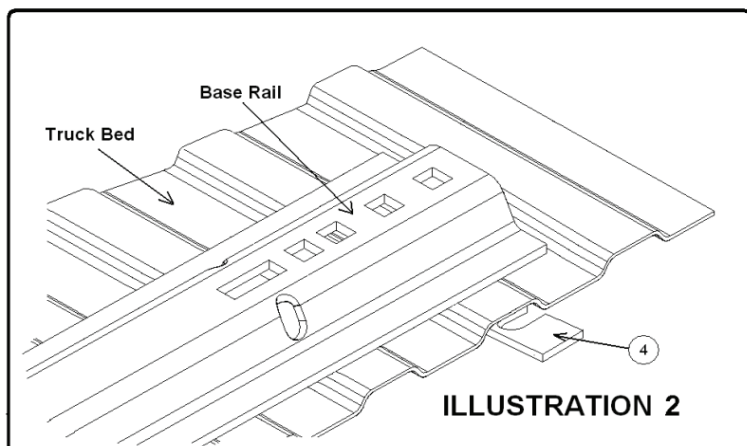


1. Fully assemble the 5th wheel hitch on a flat, level surface and pin into the base rails (assembly instructions come with hitch components). Place assembled hitch in truck bed between the wheel wells.
2. Position the base rails in truck bed as shown in Illustration 1 & 1A. When hitch is correctly positioned in the bed and the base rails are parallel, check below the bed before drilling holes to see all wiring, brake lines, and other obstructions are moved out of the way and will not be contacted by the drill. Start by drilling one hole and place a 5/8" x 3" bolt and 5/8" flat washer down through the hole after drilling and before drilling next hole. This will help to stop base rails from shifting during drilling.

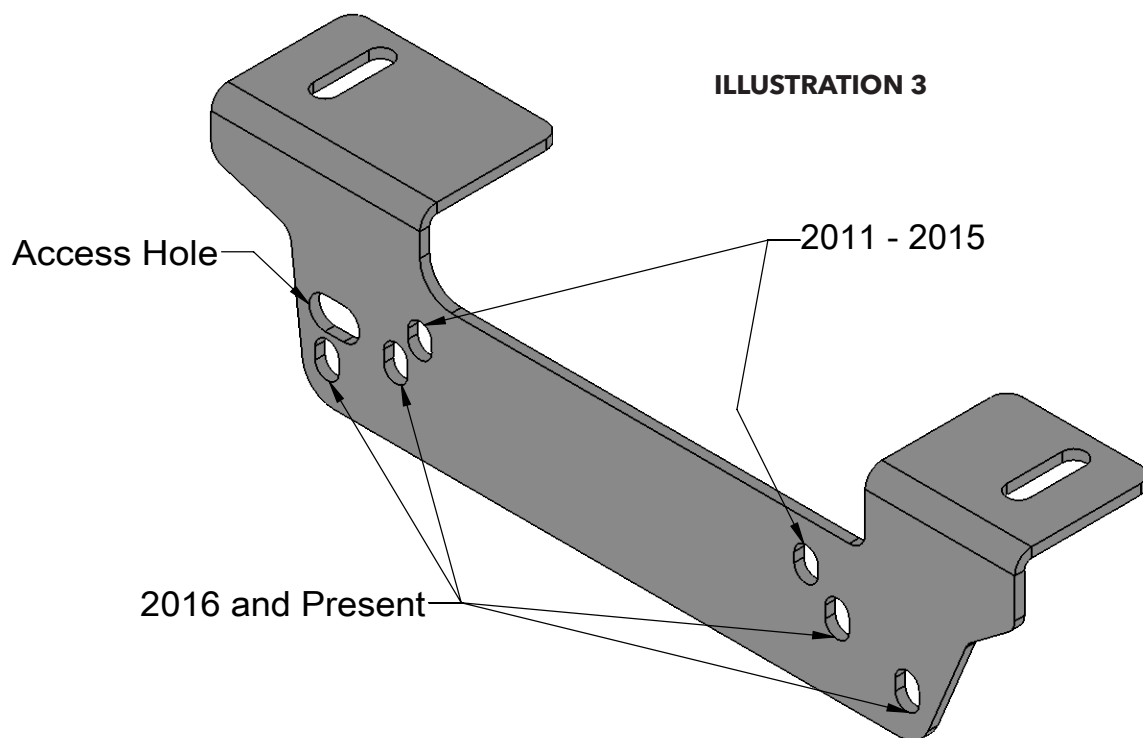
**CAUTION:** Do not install base rails over plastic bedliners. Plastic bed liners must be cut out of the way. Rails may be installed on spray in liners.

**NOTE:** Consult spray liner installer for recommended curing time.

3. If the bed corrugation above the frame bracket is UP, leaving a space above the frame bracket, place a slotted spacer plate in this location as shown in Illustration 2. If the corrugation is DOWN at this location, place the slotted spacer plate in the bed, under the base rail as shown in Illustration 2A.



4. Position the frame brackets up against the outer surface of the truck frame with the mounting tabs positioned over the frame and under the bed in line with previously drilled holes in bed where the 5/8" x 3" bolts or carriage bolts are coming down through the bed.
5. Make sure the frame brackets are tight against the flat side of the truck frame and underneath the surface of the truck bed with bolts extending down through slotted holes in frame bracket tabs. Loosely fasten the 5/8" x 3" bolts or 5/8" x 3" carriage bolts, with another 5/8" washer and 5/8" flange nuts on the bottom of the bed where the frame bracket is.
6. Use Illustration 3 and Illustration 4 to help aid in steps 7 through 10.



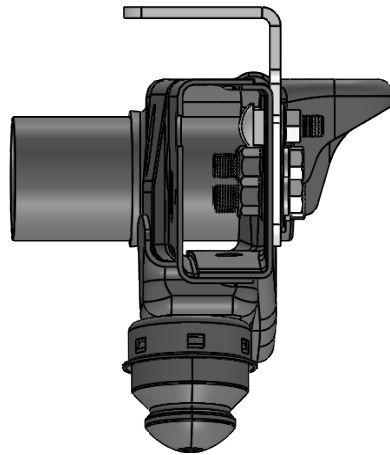


ILLUSTRATION 4

### 2011 - 2015

- Each of the frame brackets must be attached to the side frame of the truck with 5/8" x 2" carriage bolt and washer plate from the inside of the frame fished through an access hole in the frame using the fish wire provided in the kit. Use 5/8" flange nuts on the outside of the frame bracket see Illustration 4.
- Tighten all bolts according to **BOLT TORQUE SPECIFICATIONS**. Failure to tighten bolts as described may result in fastener loss or failure.

### 2016 - Present

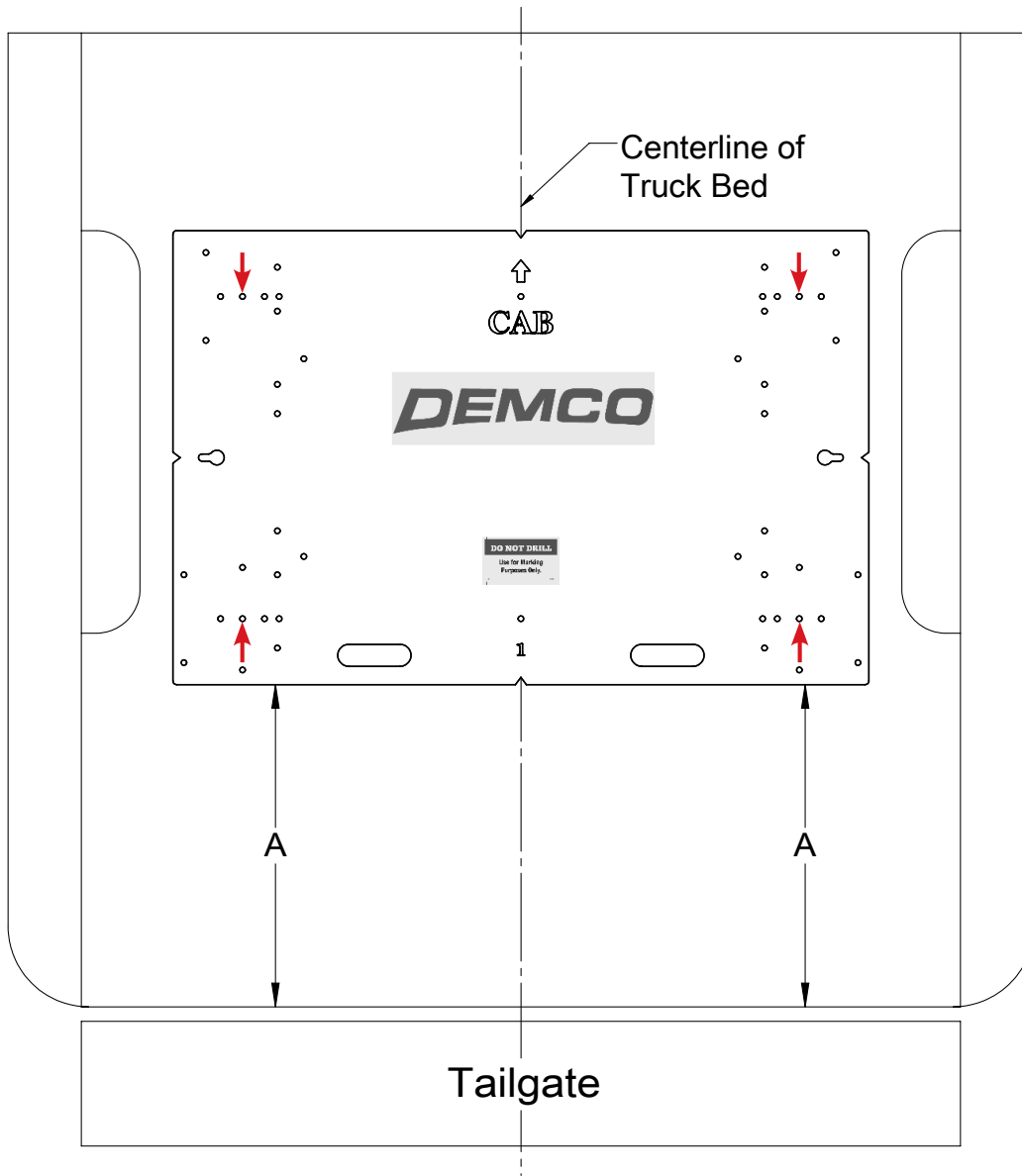
- Each of the frame brackets will be attached to the side of the frame by using the factory threaded holes in the frame. Use four 16mm x 55mm bolts and 5/8" lockwashers and 5/8" flat washers on each side. **NOTE:** The threaded holes in the frame may need to be cleaned.
- Tighten all bolts according to **BOLT TORQUE SPECIFICATIONS**. Failure to tighten bolts as described may result in fastener loss or failure.

---

## Truck Bed Drilling Instructions with Template

- Place the template in the box and center the template between the wheel wells.
- IF NEEDED, TAPE THE TEMPLATE DOWN.**
- Measure from the back of the box to the template on the passengers side and drivers side to insure that the template is square. See drawing #1 and table for measurements.
- Locate which holes you will be drilling, by the ones marked with a red arrow.
- Take a 3/8" locating punch and mark the holes to be drilled.
- BEFORE YOU DRILL, MAKE SURE THAT THE TEMPLATE DID NOT MOVE, AND THAT THERE ARE NO OBSTRUCTIONS IN THE WAY.**
- Remove the template and drill the four marked holes with a 5/8" drill bit.  
**NOTE:** A pilot hole may need to be drilled.
- Deburr each hole.
- Touch up the bare metal with some paint that matches the box of the truck.

Truck Bed Drilling Instructions with Template



Drawing #1

BOX LENGTH	DIMENSIONS	MEASUREMENT
5-1/2'	A	*N/A
6-1/2'	A	*25-1/8"
8'	A	*30"
*ALL MEASUREMENTS ARE FROM THE BACK OF THE BOX		





# **DEMCO**

4010 320th St., Boyden, IA. 51234

Phone: (712) 725-2311

Fax: (712) 725-2380

Toll Free: 1-800-54DEMCO (1-800-543-3626)

**Demco warranty policies, operator manuals, and product registration  
can be found online:**

**[www.demco-products.com](http://www.demco-products.com)**

