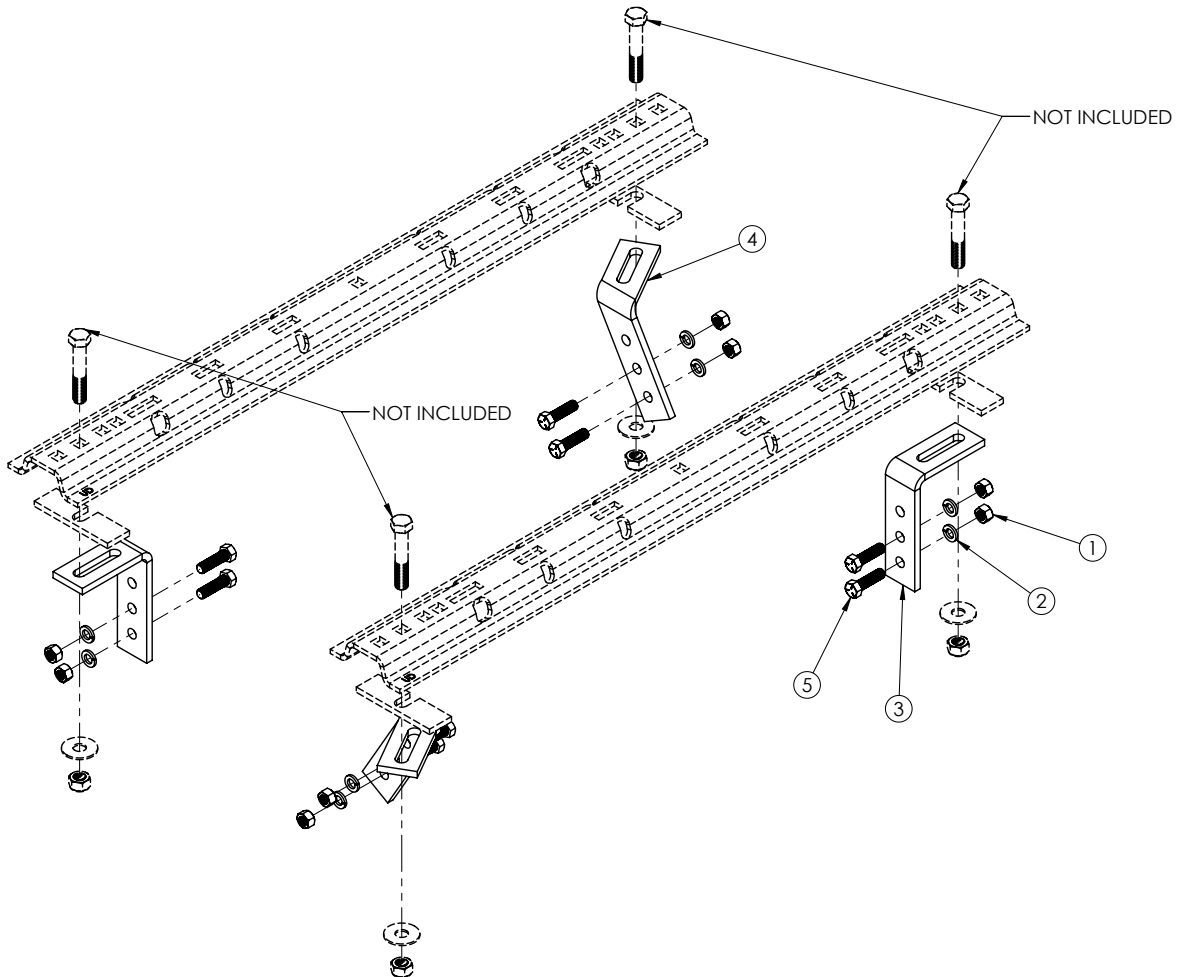


FRAME BRACKET 8552014

Chevrolet & GMC



ITEM	PART #	QTY	DESCRIPTION
1	00083	8	NUT, .50NC HEX
2	00084	8	WASHER, .50 LOCK
3	14189-76	2	FRAME BRACKET
4	14195-76	2	411AR FRAME BRACKET
5	14266	8	BOLT, .50NC X 1-3/4" HEX KNURL GR.5
6	14238	1	FISH WIRE .50 (NOT SHOWN)

Please order replacement parts by **PART NO.** and **DESCRIPTION.**

Installation

8552014 General Assembly & Installation Instructions

WARRANTY POLICY, OPERATOR MANUALS & REGISTRATION

Go online to www.demco-products.com to review Demco warranty policies, operator manuals and register your Demco product.

BOLT TORQUE SPECIFICATIONS

STANDARD BOLTS			METRIC BOLTS		
Size	Grade	Torque	Size	Grade	Torque
5/16"	5	18 ft/lbs.	8mm	8.8	23 ft/lbs.
3/8"	5	30 ft/lbs.	10mm	8.8	45 ft/lbs.
7/16"	5	50 ft/lbs.	12mm	8.8	78 ft/lbs.
1/2"	5	75 ft/lbs.	14mm	8.8	125 ft/lbs.
5/8"	5	150 ft/lbs.	16mm	8.8	160 ft/lbs.
3/4"	5	290 ft/lbs.			

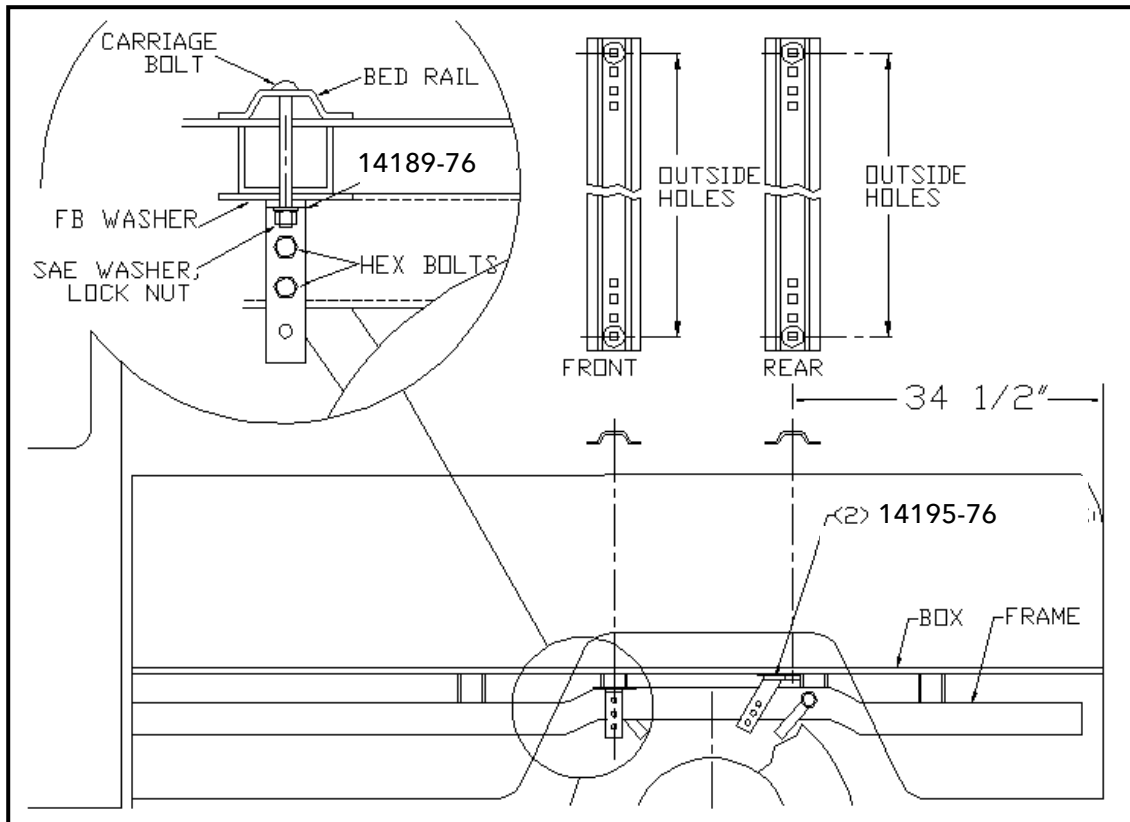
CAUTION: Do not install base rails over plastic bed liners. Plastic bed liners must be cut out of the way. Rails may be installed on spray in liners.

NOTE: All metal surfaces that come in contact with the aluminum body need to have vinyl placed in between to prevent corrosion.

NOTE: Consult spray liner installer for recommended curing time.

CHEVROLET: 1981-1987 PICKUPS

GMC: 1981-1987 PICKUPS



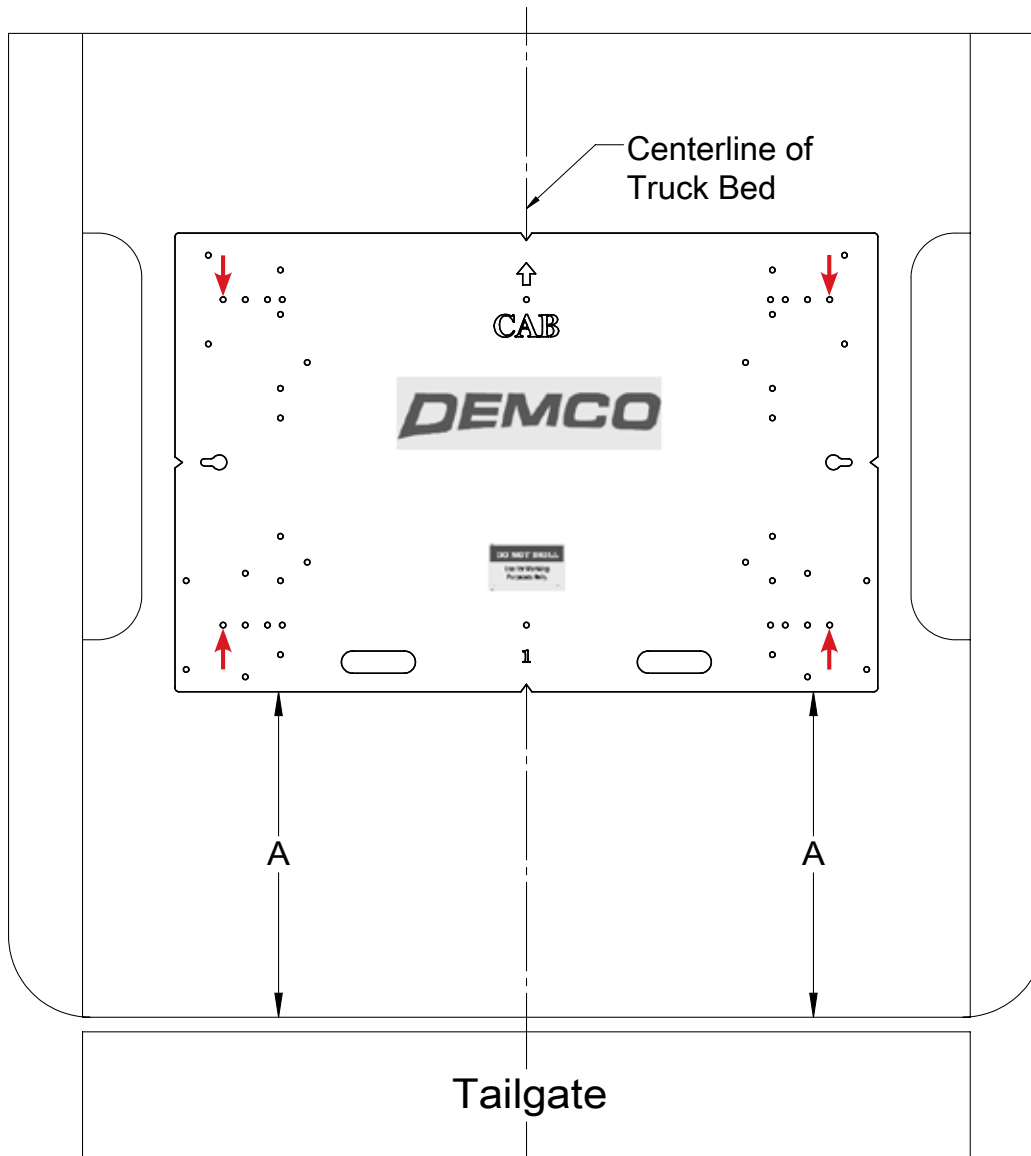
INSTALLATION

1.
 - a. Completely assemble hitch. See GENERAL INSTRUCTIONS and SAFETY supplied.
 - b. Set hitch into back of truck, center it side to side.
 - c. Measure 34 1/2" from back edge of truck box to square hole centers in rear bed rail.
2. Check underneath box at bolt hole locations for any obstruction (frame members, etc.).
3.
 - a. Drill two 5/8" holes thru FRONT BED RAIL, OUTSIDE POSITION, as shown.
 - b. Insert two extra-long (5/8" x 5") bolts.
 - c. Drill two holes in REAR BED RAIL, OUTSIDE POSITION. Insert two (5/8" x 3 1/2") bolts.
4.
 - a. Under box, place 2" wide flat bar and frame brackets onto bolt: use standard frame bracket on driver's side and passenger side rear; use special 411AR frame bracket in remaining two positions. Loosely install washer and lock nuts.
 - b. Press brackets tight against frame member; tighten nuts snug against box.
5.
 - a. Pilot drill* and drill 1/2" hole into truck frame, at two places thru holes each frame bracket -- BE CAREFUL OF ELECTRIC OR FLUID LINES behind frame members.
 - b. Fasten brackets with 1/2" x 1 3/4" knurl bolts, 1/2" nuts and 1/2" lock washers.
 - c. **TIGHTEN ALL BOLTS ACCORDING TO BOLT TORQUE SPECIFICATIONS.**

* To pilot drill: Use 1/2" drill bit or transfer punch to mark center. Drill thru with 1/4" drill.

Truck Bed Drilling Instructions with Template

1. Place the template in the box and center the template between the wheel wells.
2. **IF NEEDED, TAPE THE TEMPLATE DOWN.**
3. Measure from the back of the box to the template on the passengers side and drivers side to insure that the template is square. See **DRAWING #1** and table for measurements.
4. Locate which holes you will be drilling, by the ones marked with a red arrow.
5. Take a 3/8" locating punch and mark the holes to be drilled.
6. **BEFORE YOU DRILL, MAKE SURE THAT THE TEMPLATE DID NOT MOVE, AND THAT THERE ARE NO OBSTRUCTIONS IN THE WAY.**
7. Remove the template and drill the four marked holes with a 5/8" drill bit.
NOTE: A pilot hole may need to be drilled.
8. Deburr each hole.
9. Touch up the bare metal with some paint that matches the box of the truck.



Drawing #1

BOX LENGTH	DIMENSIONS	MEASUREMENT
CHEVROLET & GMC PICKUPS		
6-1/2'	A	*30"
8'	A	*30"
*ALL MEASUREMENTS ARE FROM THE BACK OF THE BOX		

DEMCO

4010 320th St., Boyden, IA. 51234

Phone: (712) 725-2311

Fax: (712) 725-2380

Toll Free: 1-800-54DEMCO (1-800-543-3626)

Demco warranty policies, operator manuals, and product registration
can be found online:

www.demco-products.com

