

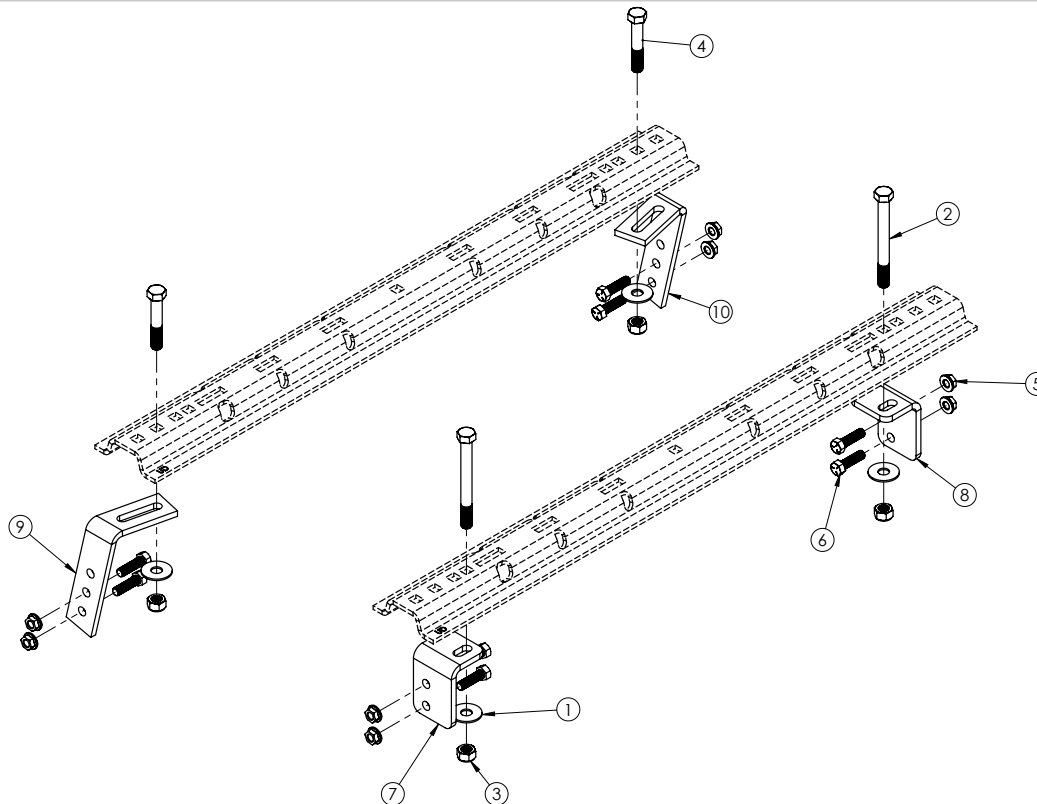


Doing Our Best to Provide You the Best

HJ32015, Rev 6
01/19

FRAME BRACKET 8552015

Dodge Ram 1500 4x2 & 4x4, Ram 2500 4x2 & 4x4 & Dodge Ram 3500 4x4 - Includes Mega Cab



ITEM	PART #	QTY	DESCRIPTION
1	00477	4	WASHER, .625 FLAT
2	01962	2	BOLT, .625NC X 6" HEX GR.5
3	02587	4	NUT, .625 HEX LOCK
4	05103	2	BOLT, .625NC X 3-1/2" HEX GR.5
5	10379	8	NUT, .50 HEX SERRATED
6	14266	8	BOLT, .50NC X 1-3/4" HEX KNURLED GR.5
7	14288-76	1	D35 FRAME BRACKET DRIVER SIDE
8	14289-76	1	C35 FRAME BRACKET PASSENGER SIDE
9	14368-76	1	B1535DS FRAME BRACKET DRIVER SIDE FRONT
10	14369-76	1	A1535PS FRAME BRACKET PASSENGER SIDE FRONT
11	14238	1	FISH WIRE .50 (NOT SHOWN)
Please order replacement parts by PART NO. and DESCRIPTION.			

OPERATOR MANUAL

Installation

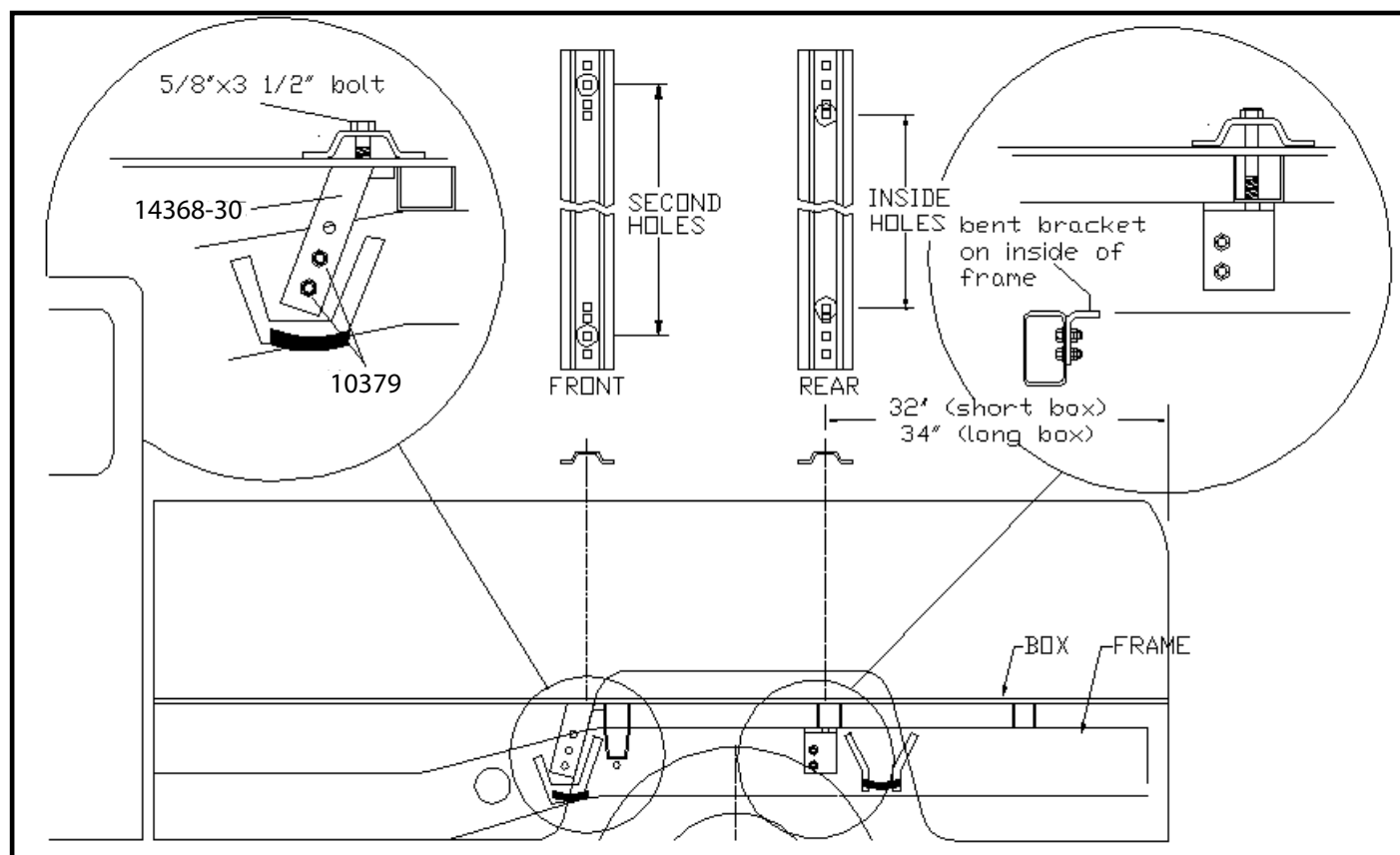
8552015 General Assembly & Installation Instructions

WARRANTY POLICY, OPERATOR MANUALS & REGISTRATION

Go online to www.demco-products.com to review Demco warranty policies, operator manuals and register your Demco product.

BOLT TORQUE SPECIFICATIONS

STANDARD BOLTS			METRIC BOLTS		
Size	Grade	Torque	Size	Grade	Torque
5/16"	5	18 ft/lbs.	8mm	8.8	23 ft/lbs.
3/8"	5	30 ft/lbs.	10mm	8.8	45 ft/lbs.
7/16"	5	50 ft/lbs.	12mm	8.8	78 ft/lbs.
1/2"	5	75 ft/lbs.	14mm	8.8	125 ft/lbs.
5/8"	5	150 ft/lbs.	16mm	8.8	160 ft/lbs.
3/4"	5	290 ft/lbs.			

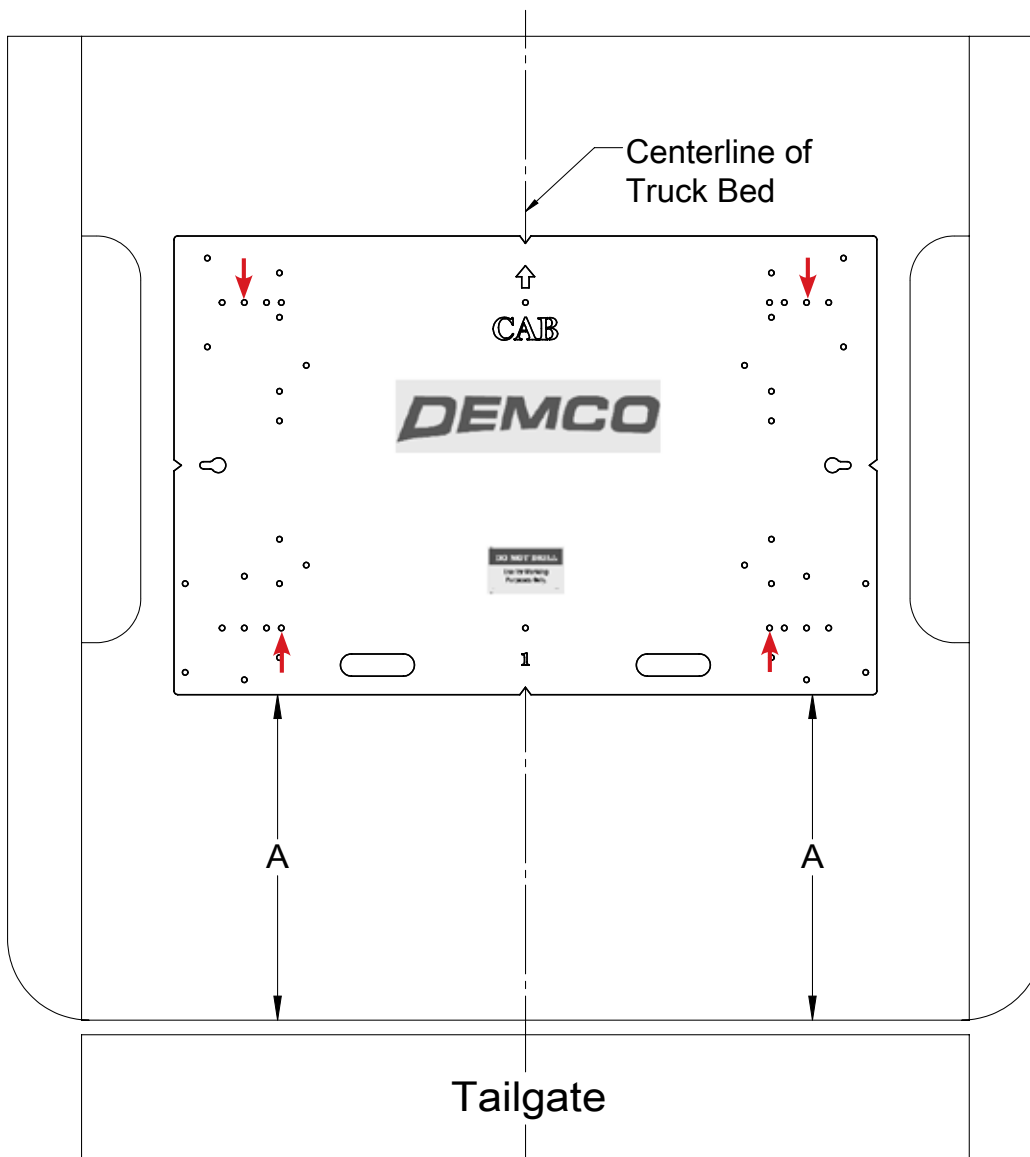


Truck Bed Drilling Instructions with Template

INSTALLATION

1. a. Completely assemble hitch. See GENERAL INSTRUCTIONS and SAFETY supplied.
b. Set hitch into back of truck, center it side to side.
c. Measure 32" (short box) or 34" (long box) from back edge of truck box to square hole centers in rear bed rail.
 2. Check underneath box at bolt hole locations for any obstructions (frame members, etc.).
 3. a. Drill two 5/8" holes thru FRONT BED RAIL, SECOND HOLE POSITION, as shown.
b. Insert two 5/8" x 3 1/2" long hex bolts.
c. Drill two 5/8" holes thru REAR BED RAIL, FOURTH HOLE INSIDE POSITION. Insert two 5/8" x 6" hex bolts.
** You will have to use the two 5/8" x 6" hex bolts to go through cross member
Frame bracket will mount inside frame facing inwards as shown in circled close up.
 4. a. Under box, place frame brackets onto hex bolts (four places).
b. Loosely install 5/8" flat washer and 5/8" Nylon lock nut.
c. Use frame brackets (drivers side) and (passenger side) on front base rail #1 and frame brackets (drivers side) and (passenger side) on rear base rail #2. Brackets will be bolted onto frame by drilling frame and fishing knurl bolt through frame with a fish wire and attach with serrated nut on outside of bracket. There are access holes just behind the rear cross member. These can be used to fish the knurl bolt through. Pilot drill* and drill 1/2" holes in frame.
 5. a. BE CAREFUL OF ELECTRIC OR FLUID LINES behind frame members.
b. Fasten brackets with 1/2" x 1-1/2" knurl bolts and 1/2" serrated nuts.
c. **TIGHTEN ALL BOLTS ACCORDING TO BOLT TORQUE SPECIFICATIONS.**
- * To pilot drill: Use 1/2" drill bit or transfer punch to mark center. Drill thru with 1/4" drill.
-

1. Place the template in the box and center the template between the wheel wells.
2. **IF NEEDED, TAPE THE TEMPLATE DOWN.**
3. Measure from the back of the box to the template on the passengers side and drivers side to insure that the template is square. See **DRAWING #1** and table for measurements.
4. Locate which holes you will be drilling, by the ones marked with a red arrow.
5. Take a 3/8" locating punch and mark the holes to be drilled.
6. **BEFORE YOU DRILL, MAKE SURE THAT THE TEMPLATE DID NOT MOVE, AND THAT THERE ARE NO OBSTRUCTIONS IN THE WAY.**
7. Remove the template and drill the four marked holes with a 5/8" drill bit.
NOTE: A pilot hole may need to be drilled.
8. Deburr each hole.
9. Touch up the bare metal with some paint that matches the box of the truck.



Drawing #2

BOX LENGTH	DIMENSIONS	MEASUREMENT
DODGE RAM 1500 4X2 & 4X4 INCLUDES MEGA CAB		
5-1/2'	A	*27-1/2"
6-1/2'	A	*27-1/2"
8'	A	*29-1/2"
DODGE RAM 2500 4X2 & 4X4 INCLUDES MEGA CAB		
6-1/2'	A	*27-1/2"
8'	A	*29-1/2"
DODGE RAM 3500 4X4 INCLUDES MEGA CAB		
6-1/2'	A	*27-1/2"
8'	A	*29-1/2"
*ALL MEASUREMENTS ARE FROM THE BACK OF THE BOX		

DEMCO

4010 320th St., Boyden, IA. 51234

Phone: (712) 725-2311

Fax: (712) 725-2380

Toll Free: 1-800-54DEMCO (1-800-543-3626)

**Demco warranty policies, operator manuals, and product registration
can be found online:**

www.demco-products.com

