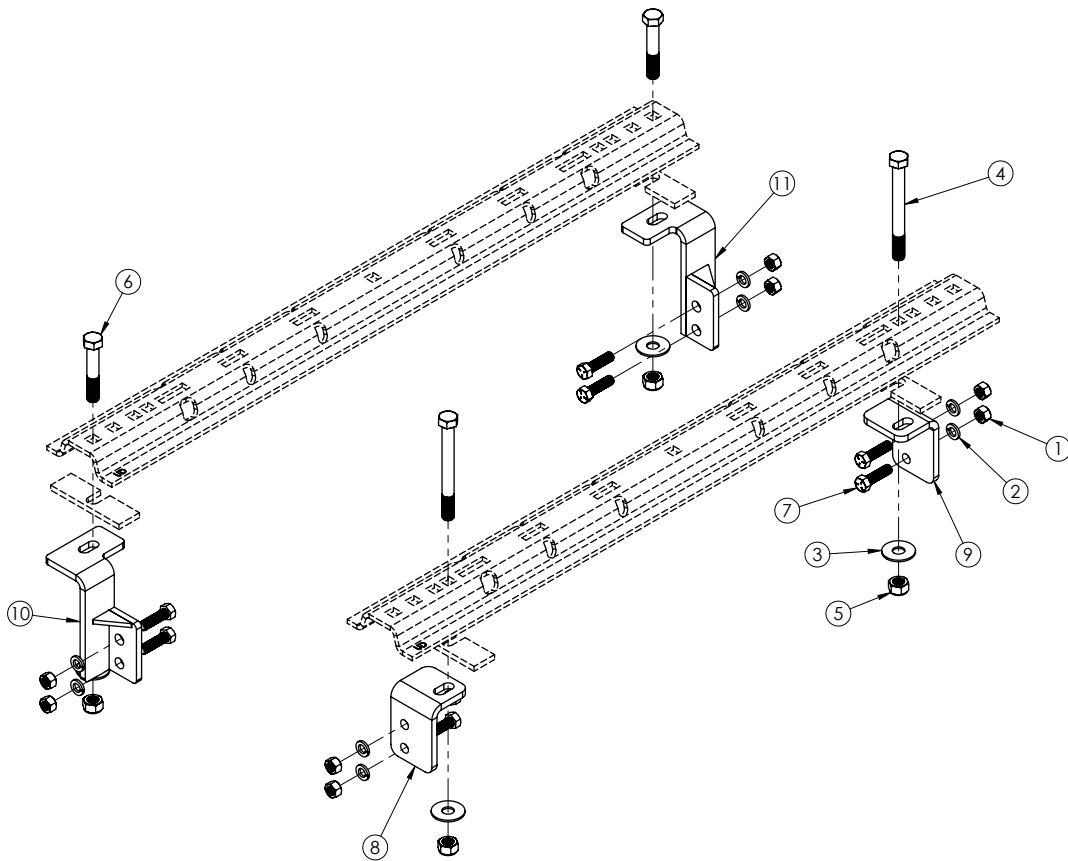


FRAME BRACKET 8552017

Dodge



ITEM	PART #	QTY	DESCRIPTION
1	00083	8	NUT, .50
2	00084	8	WASHER, .50 LOCK
3	00477	4	WASHER, .625 FLAT
4	01962	2	BOLT, .625 X 6" HEX GR.5
5	02587	4	NUT, .625 NYLON LOCK
6	05103	2	BOLT, .625 X 3-1/2" HEX GR.5
7	14266	8	BOLT, .50 X 1-3/4" HEX GR.5
8	14288-76	1	FRAME BRACKET D35 DRIVER SIDE
9	14289-76	1	FRAME BRACKET C35 PASSENGER SIDE
10	14298-76	1	FRAME BRACKET A3500 FRONT DRIVER SIDE
11	14299-76	1	FRAME BRACKET A3500 FRONT PASSENGER SIDE
12	14238	1	FISH WIRE .50 (NOT SHOWN)

Please order replacement parts by PART NO. and DESCRIPTION.

Installation

8552017 General Assembly & Installation Instructions

WARRANTY POLICY, OPERATOR MANUALS & REGISTRATION

Go online to www.demco-products.com to review Demco warranty policies, operator manuals and register your Demco product.

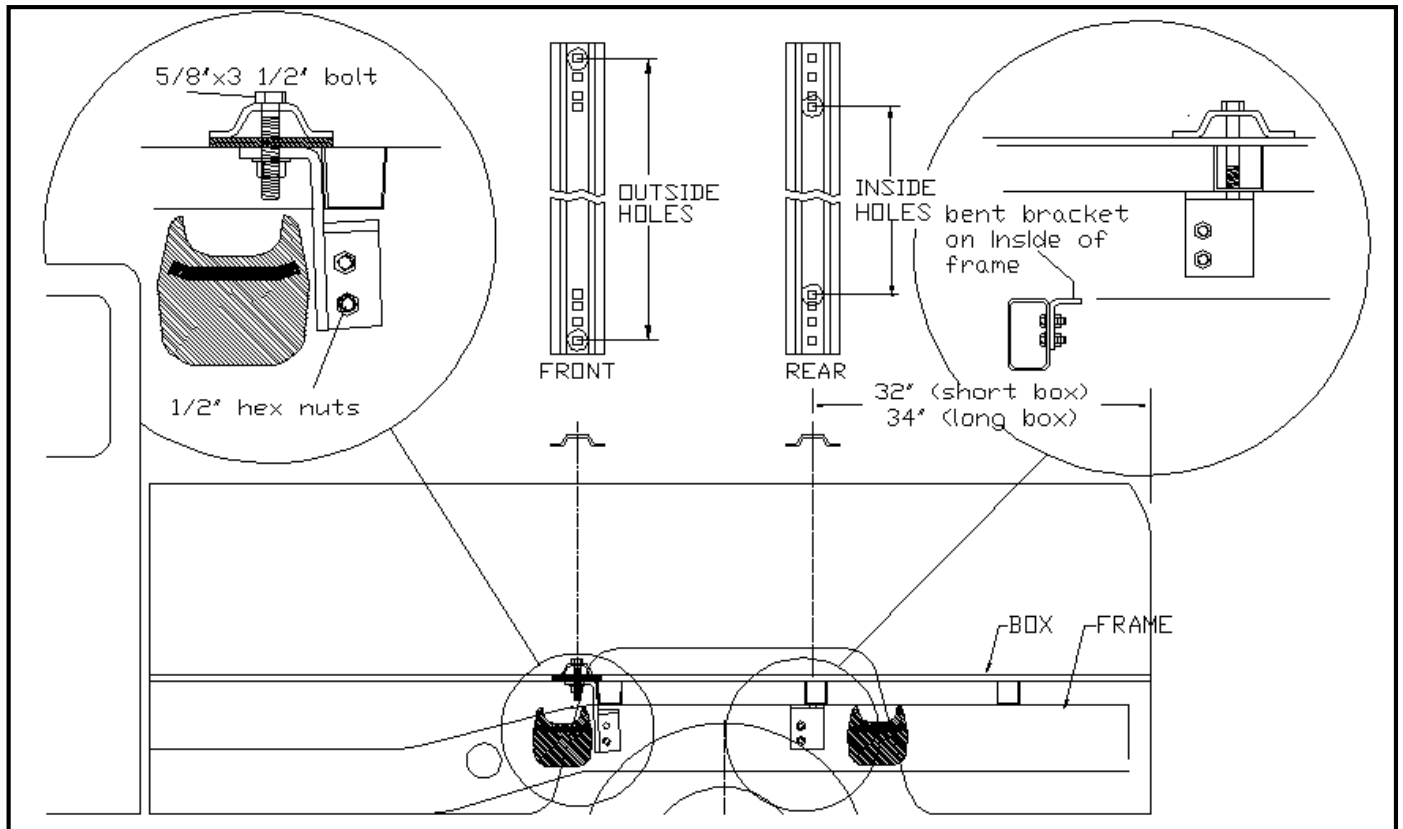
BOLT TORQUE SPECIFICATIONS

STANDARD BOLTS			METRIC BOLTS		
Size	Grade	Torque	Size	Grade	Torque
5/16"	5	18 ft/lbs.	8mm	8.8	23 ft/lbs.
3/8"	5	30 ft/lbs.	10mm	8.8	45 ft/lbs.
7/16"	5	50 ft/lbs.	12mm	8.8	78 ft/lbs.
1/2"	5	75 ft/lbs.	14mm	8.8	125 ft/lbs.
5/8"	5	150 ft/lbs.	16mm	8.8	160 ft/lbs.
3/4"	5	290 ft/lbs.			

CAUTION: Do not install base rails over plastic bed liners. Plastic bed liners must be cut out of the way. Rails may be installed on spray in liners.

NOTE: All metal surfaces that come in contact with the aluminum body need to have vinyl placed in between to prevent corrosion.

NOTE: Consult spray liner installer for recommended curing time.



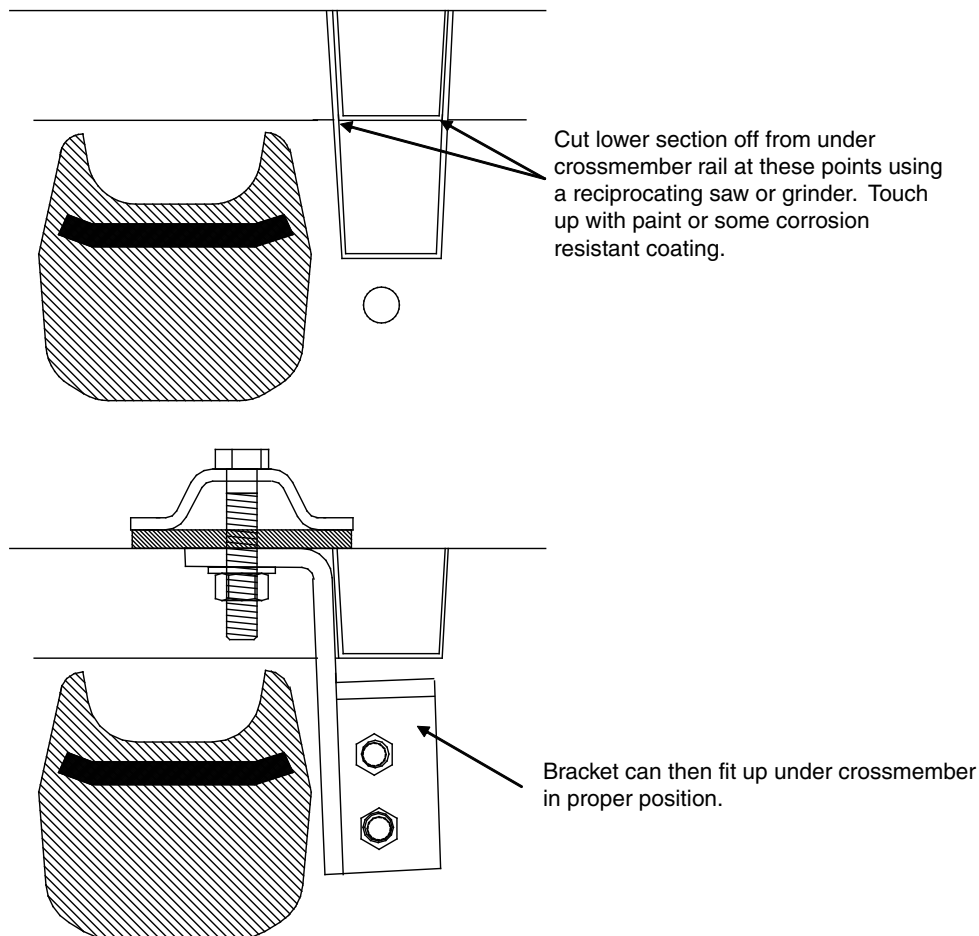
INSTALLATION

1. a. Completely assemble hitch. See GENERAL INSTRUCTIONS and SAFETY supplied.
 b. Set hitch into back of truck, center it side to side.
 c. Measure 32" short box or 34" long box from back edge of truck box to square hole center in rear bed rail.
2. Check underneath box at bolt hole locations for any obstructions (frame members, etc.).
3. a. Drill two 5/8" holes thru FRONT BED RAIL, OUTSIDE HOLE POSITION, as shown. Drop in two 5/8" x 3-1/2" bolts.
 b. Drill two holes in REAR BED RAIL, INSIDE POSITION. Drop in two 5/8" x 6" bolts. **You will have to use the two 5/8" x 6" bolts to go through crossmember. Frame bracket will mount inside frame facing inwards as shown in circled close up.
4. a. Under box, loosely install frame brackets, SAE flat washer and nylon lock nuts onto 5/8" bolts (4 places).
5. a. Use frame brackets A3500DS and A3500PS on front base rail #1 and frame bracket C35 and D35 on rear base rail #2. Brackets will be bolted onto frame by drilling frame and knurled bolt through frame with fish wire and attached with 1/2" nut and 1/2" lock washer on outside of brackets. Front brackets will use existing frame hole under the crossmember for the bottom hole in bracket so only one hole needs to be drilled. There are access holes just behind the rear crossmember. These can be used to fish the knurled bolt through. Use a 1/2" drill for holes.
6. a. BE CAREFUL OF ELECTRICAL OR FLUID LINES behind frame members.
 b. Fasten brackets with 1/2" x 1-3/4" knurled bolts, nuts and lock washers for all brackets.
 c. TIGHTEN ALL BOLTS ACCORDING TO **BOLT TORQUE SPECIFICATIONS**.

IMPORTANT

Dodge 3500 4x2 short box trucks only

There is a box alignment bracket located directly under the front crossmember on all 2003-08 Dodge 3500 short box 2 wheel drive trucks. This bracket will have to be removed to enable bolting on the front mounting brackets for your fifth wheel hitch. Below describes how to do this. This bracket is not attached to the frame in any way and serves no purpose other than to align the box on the frame during assembly.

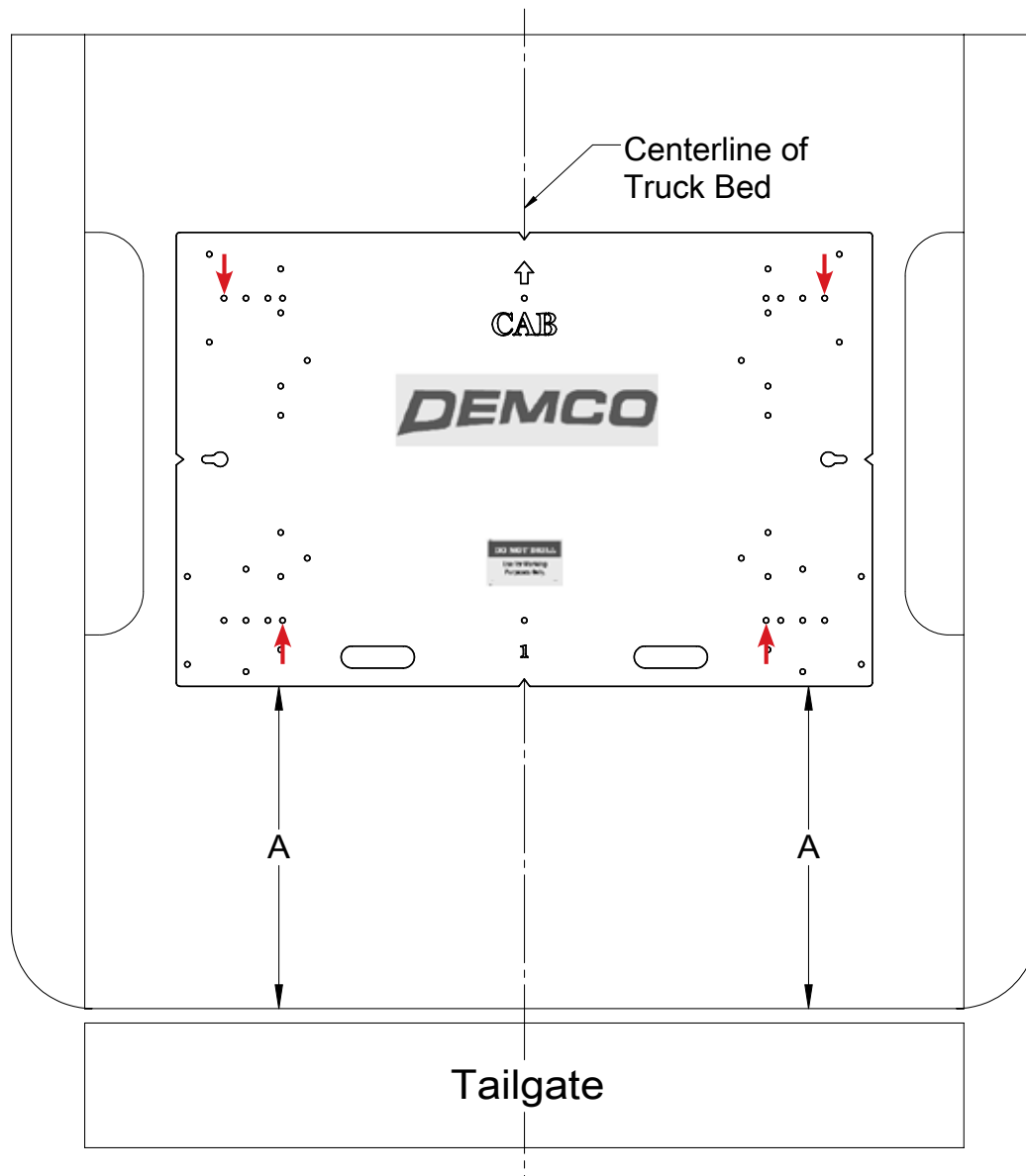


Installation

Truck Bed Drilling Instructions with Template

1. Place the template in the box and center the template between the wheel wells.
2. **IF NEEDED, TAPE THE TEMPLATE DOWN.**
3. Measure from the back of the box to the template on the passengers side and drivers side to insure that the template is square. See **DRAWING #1** and table for measurements.
4. Locate which holes you will be drilling, by the ones marked with a red arrow.
5. Take a 3/8" locating punch and mark the holes to be drilled.
6. **BEFORE YOU DRILL, MAKE SURE THAT THE TEMPLATE DID NOT MOVE, AND THAT THERE ARE NO OBSTRUCTIONS IN THE WAY.**
7. Remove the template and drill the four marked holes with a 5/8" drill bit.
NOTE: A pilot hole may need to be drilled.
8. Deburr each hole.
9. Touch up the bare metal with some paint that matches the box of the truck.

Truck Bed Drilling Instructions with Template



Drawing #1

BOX LENGTH	DIMENSIONS	MEASUREMENT
DODGE 2003-2012 RAM 3500 4x2 ONLY INCLUDING MEGA CAB		
6-1/2'	A	*27-1/2"
8'	A	*29-1/2"
*ALL MEASUREMENTS ARE FROM THE BACK OF THE BOX		

DEMCO

4010 320th St., Boyden, IA. 51234

Phone: (712) 725-2311

Fax: (712) 725-2380

Toll Free: 1-800-54DEMCO (1-800-543-3626)

**Demco warranty policies, operator manuals, and product registration
can be found online:**

www.demco-products.com

