



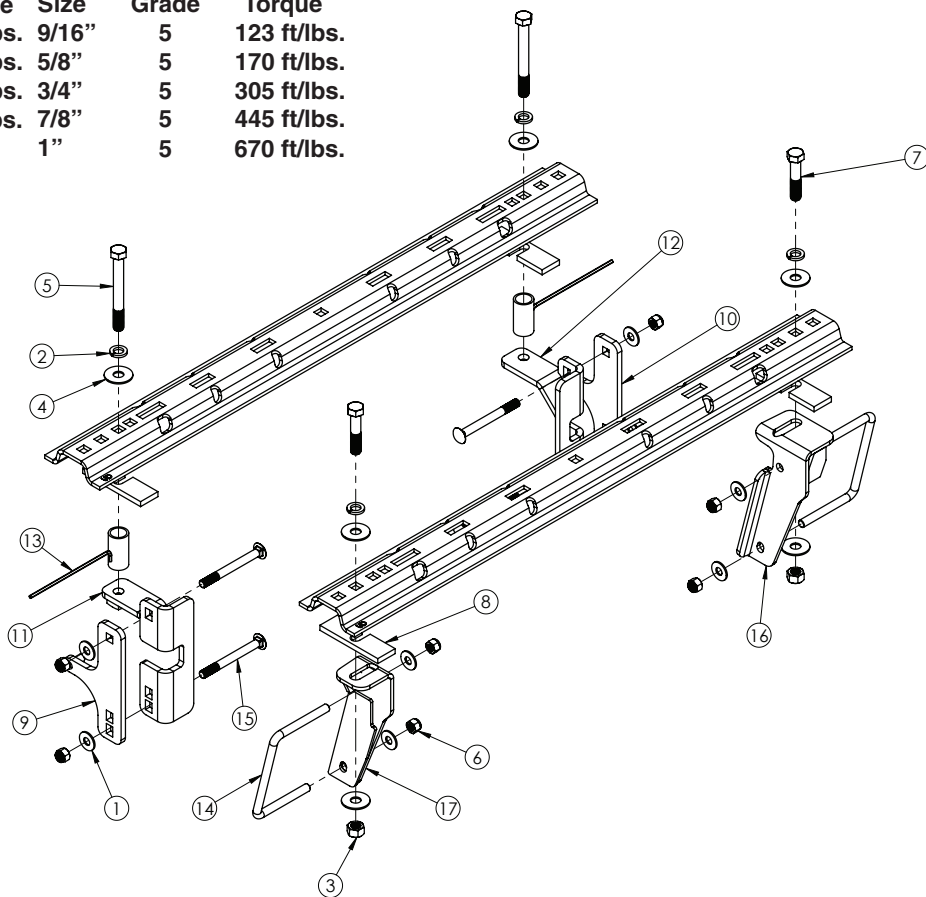
DODGE

**BOLT TORQUE SPECIFICATIONS**

**STANDARD BOLTS:**

Size	Grade	Torque	Size	Grade	Torque
5/16"	5	20 ft/lbs.	9/16"	5	123 ft/lbs.
3/8"	5	35 ft/lbs.	5/8"	5	170 ft/lbs.
7/16"	5	56 ft/lbs.	3/4"	5	305 ft/lbs.
1/2"	5	85 ft/lbs.	7/8"	5	445 ft/lbs.
			1"	5	670 ft/lbs.

# FRAME BRACKET



**8552023 PARTS LIST**

REF. NO.	PART NO.	QTY.	DESCRIPTION
1.	00085	8	1/2" Flat Washer
2.	00248	4	5/8" Lock Washer
3.	00291	2	5/8" Hex Nut
4.	00477	6	5/8" Flat Washer
5.	00943	2	5/8" -NC x 5 1/2" Hex Bolt Gr.5
6.	02178	8	1/2" -NC Nylon Lock Nut
7.	04215	2	5/8" -NC x 3" Hex Bolt Gr.5
8.	14156-95	4	Shim
9.	14296-76	1	Front Frame Bracket Driver Side
10.	14297-76	1	Front Frame Bracket Passenger Side
11.	14304-76	1	Front Clamp Bracket Driver Side
12.	14305-76	1	Front Clamp Bracket Passenger Side
13.	14367-76	2	Spacer Tube
14.	14375	2	1/2" -NC x 6 1/2" x 4 1/4" U-Bolt
15.	14376	4	1/2" -NC x 5" Carriage Bolt
16.	14655-76	1	Passenger Rear Bracket
17.	14657-76	1	Driver Rear Bracket
18.	14577-76	4	Spacer Plate (not shown)

Please order replacement parts by **PART NO.** and **DESCRIPTION.**

ASSEMBLY  
OPERATION  
REPLACEMENT PARTS

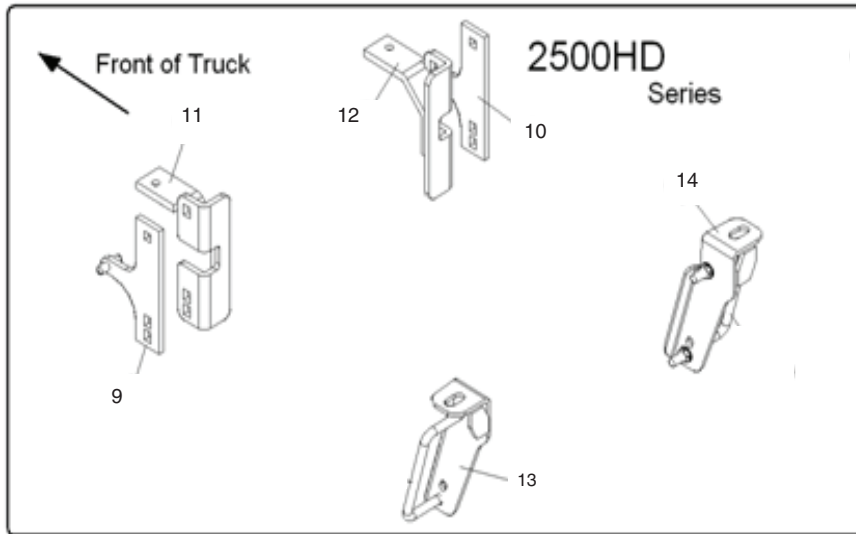
**READ** complete manual CAREFULLY  
BEFORE attempting operation.

Doing Our Best to Provide You the Best

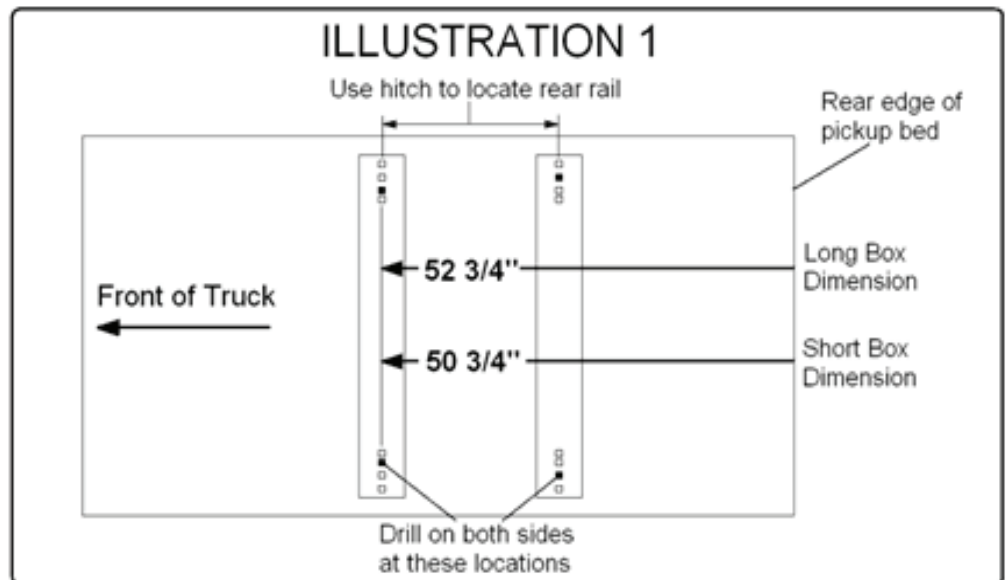
DODGE: 2013 RAM 2500 (4x2 & 4x4) (6 1/2' & 8' Box includes MegaCab)  
HIJACKER HITCH: 24-SL

**CAUTION:** Do not install base rails over plastic bedliners. Plastic bed liners must be cut out of the way. Rails may be installed on spray in liners.

**NOTE:** Consult spray liner installer for recommended curing time.



1. On the inside of the left vehicle frame is a wiring harness that is held in place with plastic clips. This section of wiring harness must be moved aside by removing plastic clips from frame. This will allow the hitch parts to be positioned correctly on frame.
2. Fully assemble the 5<sup>th</sup> wheel hitch on a flat, level surface and pin into the base rails (assembly instructions come with the hitch components). Place assembled hitch in truck bed between the wheel wells.



3. Position the base rails in truck bed as shown in Illustration 1 (previous page). Be sure the base rails are parallel by measuring diagonally as shown in Illustration 1a.

4. Make two attachment points on the truck bed using the square holes in the front base rail as shown in Illustration 1 (previous page).

**NOTE:** Mark center of square bolt hole.

DO NOT mark the rear base rails at this time. Check below the bed before drilling holes to see that all wiring, brake lines or other obstructions are moved out of the way and will not be contacted by the drill. Drill 1/4" diameter pilot holes down through the bed and hat section at the previously marked points. Be certain that the holes are drilled in the correct location. They must be drilled through the under bed hat section.

5. Position the left and right front outer brackets (#14296-76) and (#14297-76) against their respective truck frames so that the pin in each bracket aligns with the existing hole in the side of the vehicle frame.

**NOTE:** There may be a wire hanger bracket bolted to the frame at the location which will not allow the front frame bracket to be installed. This wire bracket will have to be removed from the frame so that the frame bracket can be installed.

6. Bolt the left and right front outer brackets (#14296-76) and (#14297-76) to the frame with the inner brackets (#14304-76) and (#14305-76). Take care when positioning the left inner bracket (#14304-76) so that the slot in bracket fits over the steel brake line.

ILLUSTRATION 1a

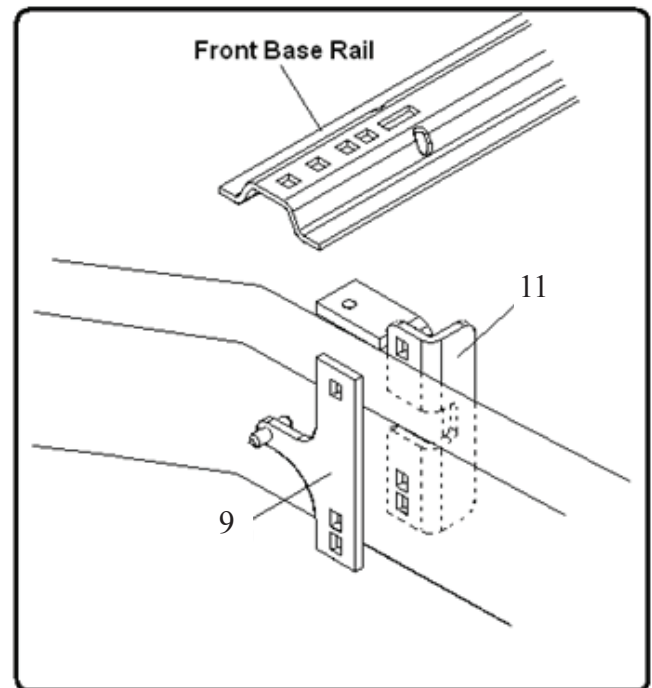
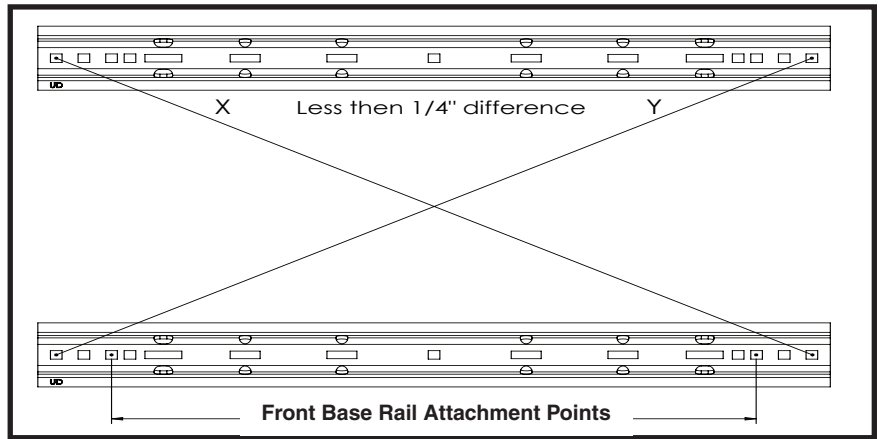
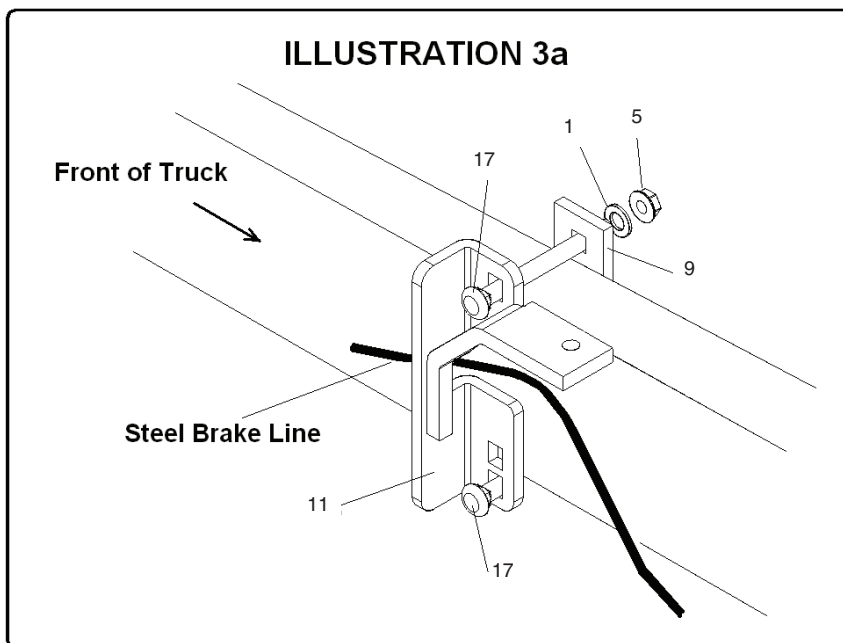


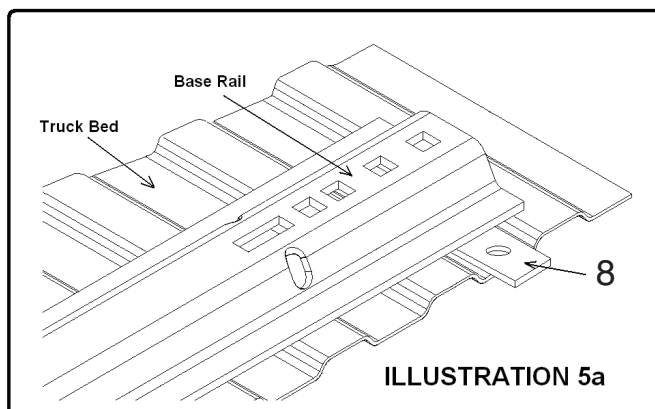
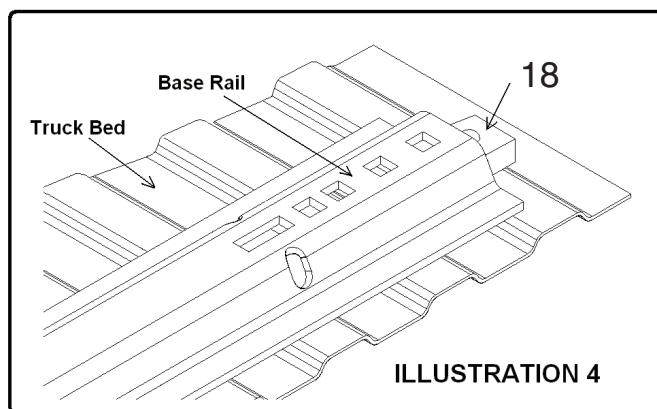
ILLUSTRATION 3

See illustration 3 and 3a. Use the carriage bolts (#14376) at both bracket attachments. Slide bracket (#14304-76) rearward away from the gas tank so long bolt can be installed. Then slide bracket forward into position. Use the lower hole in each bracket. Bolts must be as close to bottom of truck frame as possible. The tab on the inner bracket should be against the bottom of the bed support hat section. The hole in the tab should be aligned with the previously drilled 1/4" pilot hole.

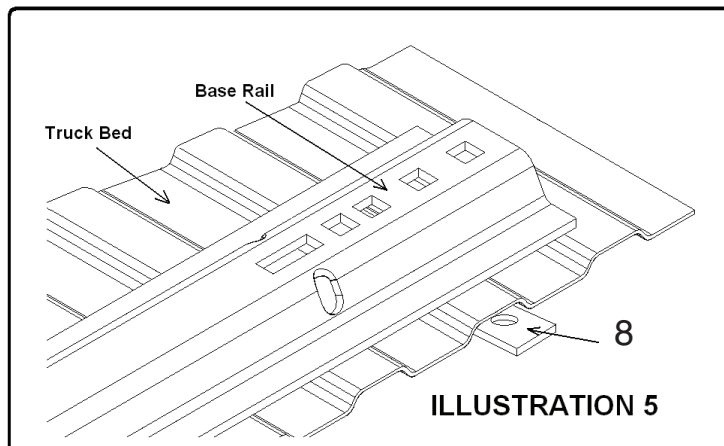


7. Position the base rails in the bed so that the third square 5/8" hole in from the end on the front rail is lined up over the previously drilled pilot holes. Double check that the pilot holes line up with holes in base rail and the tab on frame brackets under the bed. Move base rails away from pilot holes and drill a 3/4" hole down through truck bed at each previously drilled pilot holes. The 3/4" hole will give some tolerance to get the bolt down into the tapped bracket hole. **Use caution when drilling so that the drill does not make contact with the installed brackets or fuel tank under bed.**

**NOTE:** For alternative installation procedures refer to the last page of this document.



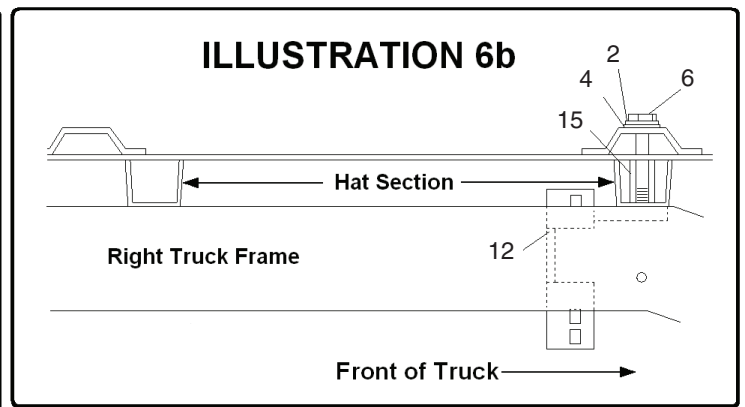
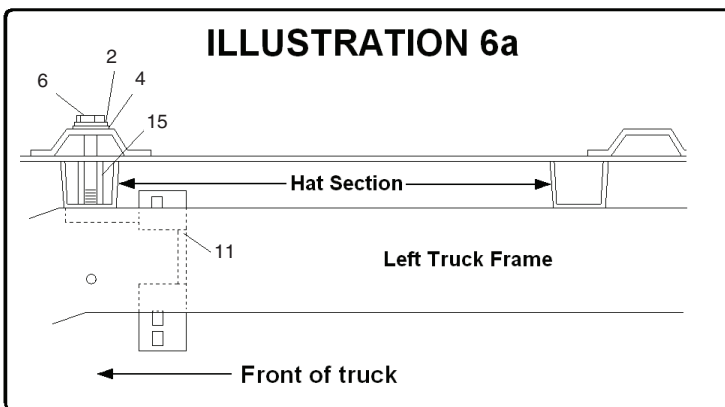
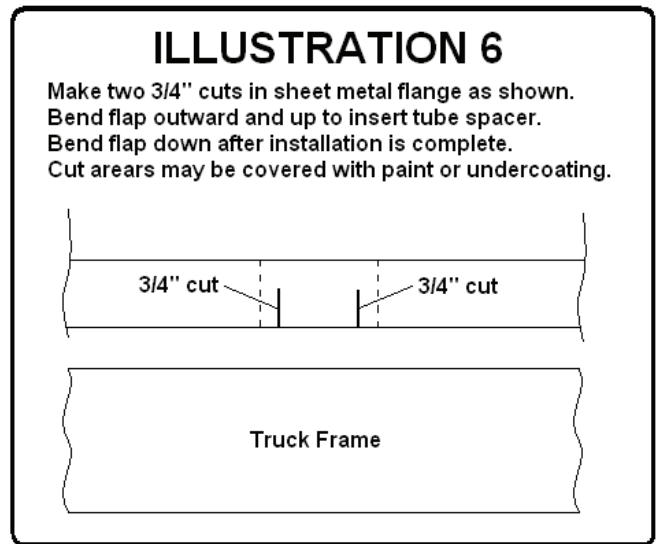
8. Place a 3/4" thick spacer plate under ends of each base rail, in line with drilled holes, as shown in illustration 4. If the bed corrugation above the mounting bracket at the drilled hole is UP, leaving a space above the bracket, place space plate in this location as shown in illustration 5. If the corrugation is DOWN, at this location, place a spacer plate in the bed, under the base rail as shown in illustration 5a.



9. Slide tube spacers (#14367-76) into the forward bed support hat section from the open end in each wheel well.

**NOTE:** On some applications a small sheet metal flange may appear to obstruct placement of the spacer tube. This flange can be modified to gain access to the hat section. See detail for this procedure in illustration 6.

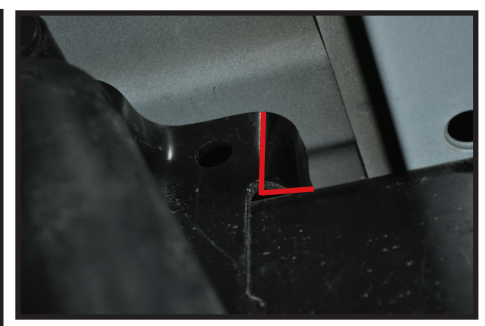
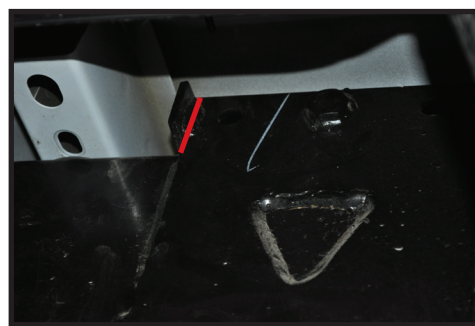
10. On left side of truck align the tube spacer with drilled hole and insert 5/8" x 5 1/2" bolt (#00943) with 5/8" flat washer (#00477) and 5/8" lock washer (#00248) down through all parts and mounting brackets. See illustration 6a. Thread bolt into tapped plate on left front inner bracket (#14304-76). Repeat procedure on right side of truck base rail using 5/8" flat washer and 5/8" lock washer as shown in illustration 6b. Tighten the 5/8" bolts to specified torque on front page.



11. Mark the rear hole locations using the rear base rails as shown in illustration 1. Drill a 5/8" hole down through bed using the second hole in from each end of rear base rail as a guide as shown in illustration 1.

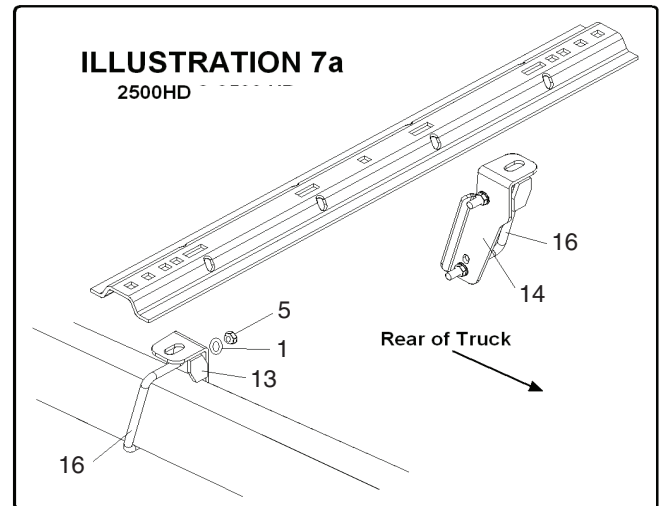
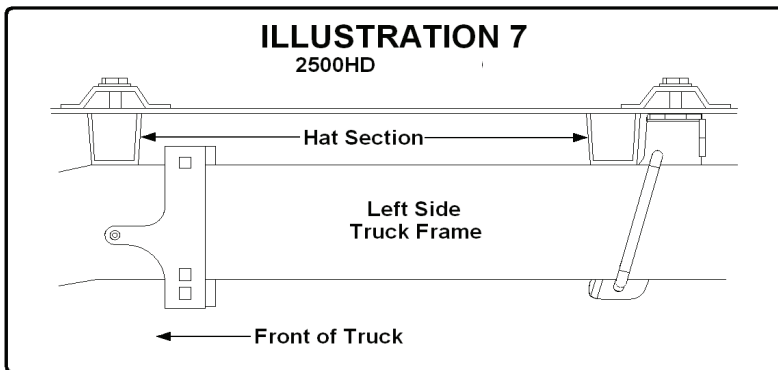
12. Place spacer plates under base rails as described in step 8. Place 5/8" x 3" bolts (#04215) with 5/8" flat washer (#00477) down through base rail, spacer plates and truck bed at drilled holes.

13. On driver side take rear end vent tube and relocate to rear of shock mount. Also on driver side the shock mount will need to be trimmed down for clearance of bolt coming through the box. Approximately 1" will need to be removed as shown in pictures.



14. Place the left (#14654-76) and right inner mounting bracket (#14655-76) up in place against the inside surface of the truck frame, just behind the under bed hat section reinforcement. See illustrations 7 and 7a. The previously installed 5/8" bolts should go through the upper tab in each bracket. **NOTE:** The rubber tailpipe hanger may need to be moved away from the frame slightly so that the right bracket can be positioned correctly. Bolt the brackets loosely in place at these bolts with 5/8" flat washer (#00477), 5/8" lock washer (#00248) and 5/8" hex nuts (#00291).

15. Secure the left and right inner mounting brackets in place with the longer U-Bolts (#14375) placed around truck frame as shown in illustration 7 and 7a. Use the lower hole in each bracket. Bolts must be as close to bottom of truck frame as possible.



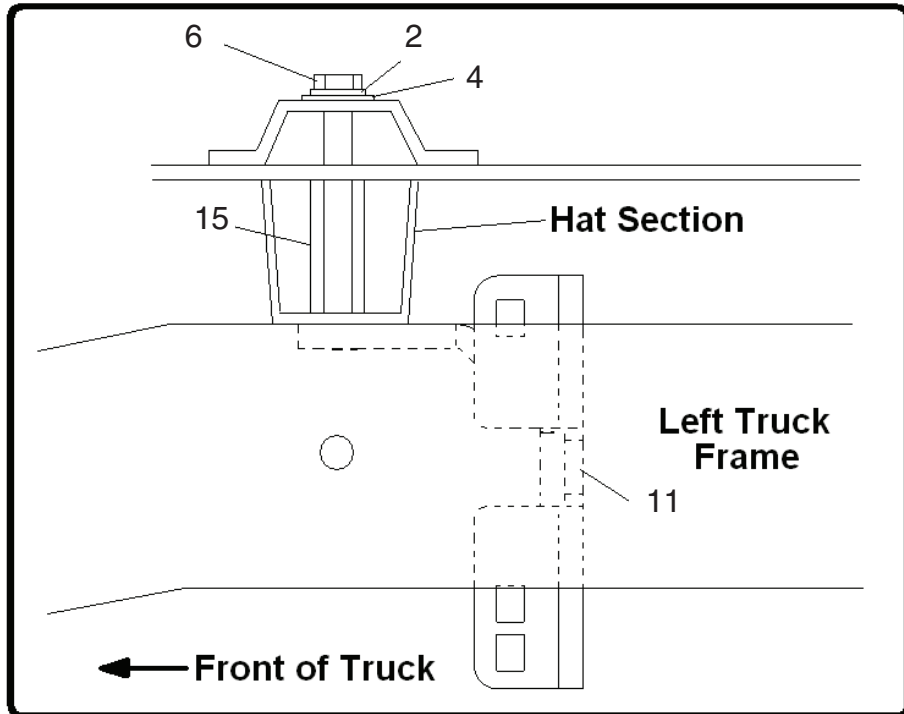
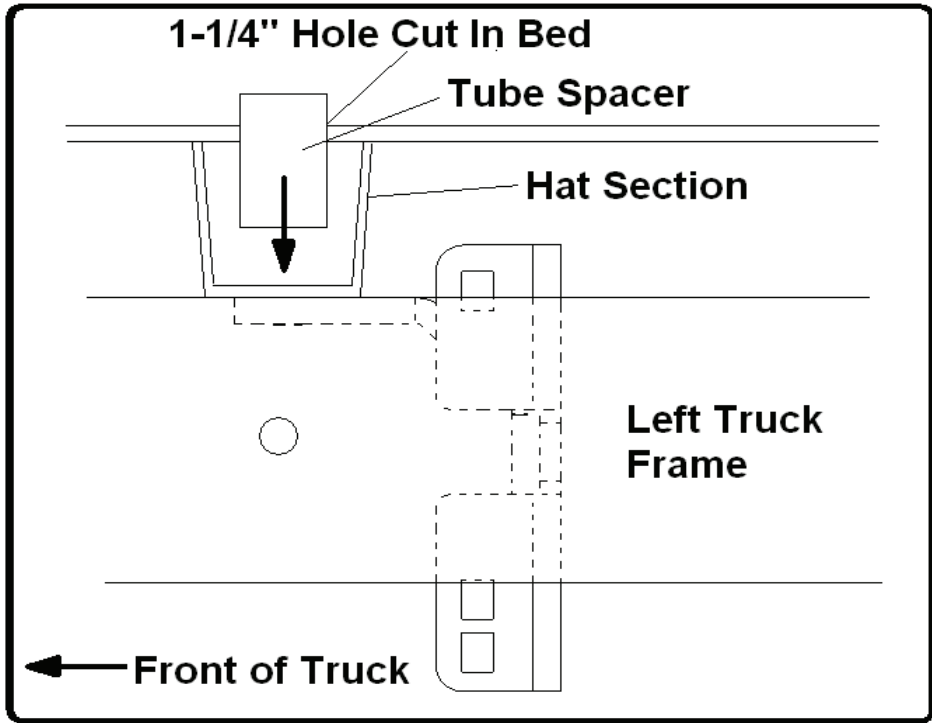
**NOTE:** After the U-Bolts are installed and torque to the specifications in the chart on the front page, the lower leg of the U-Bolts may need to be trimmed off to clear leaf springs or suspension parts.

16. Tighten all bolts to chart on front page.

## Alternative Installation Procedure

**BE SURE TO ADVISE CUSTOMER ABOUT THE LARGE HOLES THAT WILL BE CUT INTO BED BEFORE BEGINNING THIS INSTALLATION.**

1. Cut a 1-1/4" hole down through the bed at pilot hole location. This hole must only be cut through bed of truck, not through bottom of the hat section under the bed.
2. Drill a 5/8" hole through bottom of the hat section under the bed at the previously drilled pilot hole.
3. Remove the wire handle from the spacer tube (#14367-76). Insert the spacer tube down through the hole in the bed so that it will rest on the under bed hat section in line with the previously drilled 5/8" hole.
4. With the front base rail in place, insert a 5/8" x 5-1/2" hex bolt (#14357) down through the base rail, tube spacer and frame bracket tab. Bolt securely in place at this location.
5. Repeat procedure on the other end of front base rail.
6. Continue with step 8 of main instructions.





4010 320th St., P.O. BOX 189, BOYDEN, IA. 51234  
PH: (712) 725-2311  
FAX: (712) 725-2380 or 1-800-845-6420  
TOLL FREE: 1-800-54DEMCO (1-800-543-3626)  
[www.towdemco.com](http://www.towdemco.com)