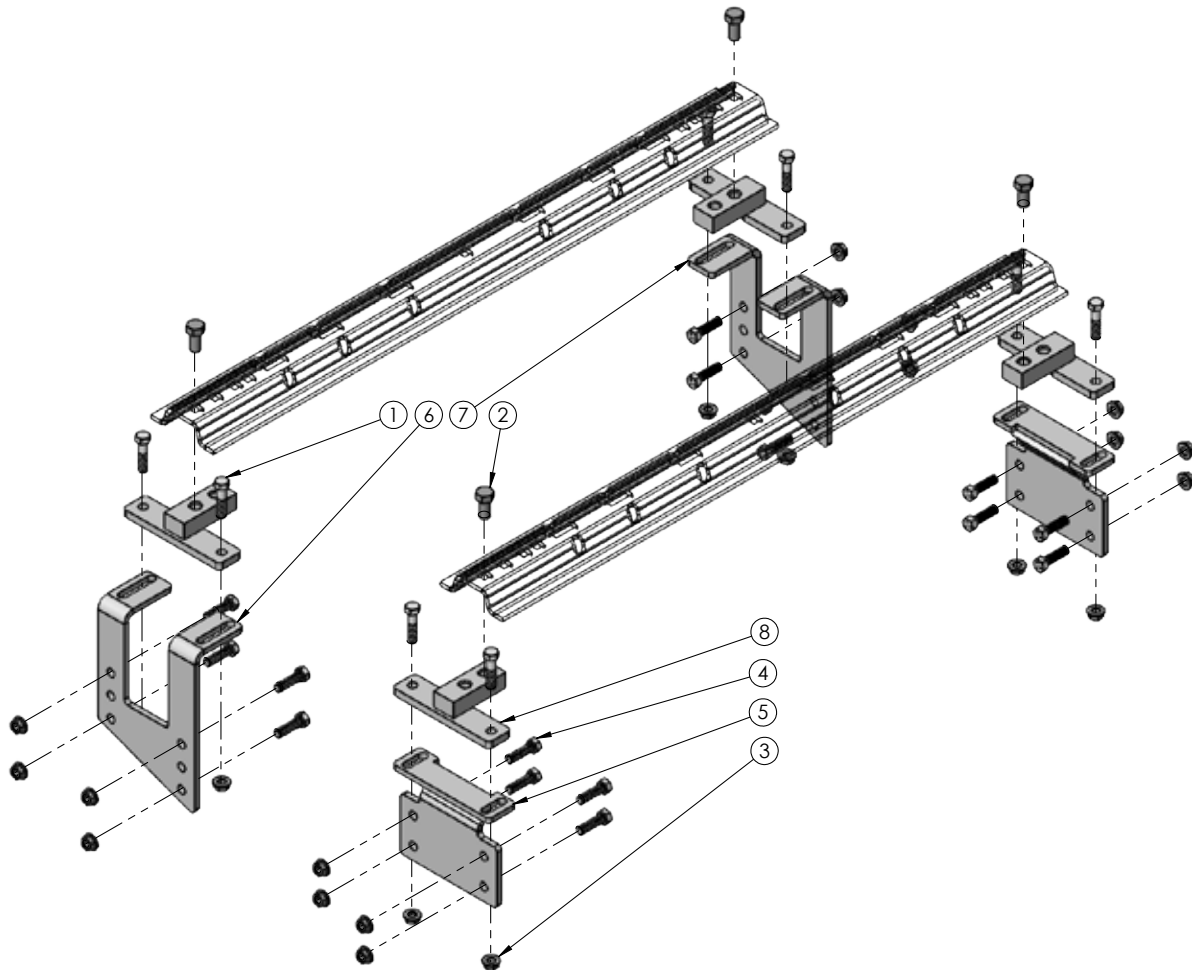


FRAME BRACKET 8552033

Nissan Titan



ITEM	PART #	QTY	DESCRIPTION
1	01253	8	BOLT, .50NC X 2.00 HEX HEAD GR.5
2	05366	4	BOLT .625NC X 1.25 GR5 HEX
3	10379	24	1/2" UNC FLANGED NUT
4	14266	16	BOLT .50NC X 1.75 GR5 HEX KNURLED NECK
5	16577-76	2	REAR BRACKET
6	16578-76	1	FRONT BRACKET, PASSENGER
7	16579-76	1	FRONT BRACKET, DRIVER
8	16580-76	4	RAIL SPACER
-	14238	1	FISH WIRE 1/2" (NOT SHOWN)
-	12329	2	LOCTITE (NOT SHOWN)

Please order replacement parts by PART NO. and DESCRIPTION.

WARRANTY POLICY, OPERATOR MANUALS & REGISTRATION

Go online to www.demco-products.com to review Demco warranty policies, operator manuals and register your Demco product.

BOLT TORQUE SPECIFICATIONS

STANDARD BOLTS			METRIC BOLTS		
Size	Grade	Torque	Size	Grade	Torque
5/16"	5	18 ft/lbs.	8mm	8.8	23 ft/lbs.
3/8"	5	30 ft/lbs.	10mm	8.8	45 ft/lbs.
7/16"	5	50 ft/lbs.	12mm	8.8	78 ft/lbs.
1/2"	5	75 ft/lbs.	14mm	8.8	125 ft/lbs.
5/8"	5	150 ft/lbs.	16mm	8.8	160 ft/lbs.
3/4"	5	290 ft/lbs.			

Installation Instructions



1. Remove the rear tires by either placing the truck on a hoist, or jacking the rear up.
2. Remove the spare tire.



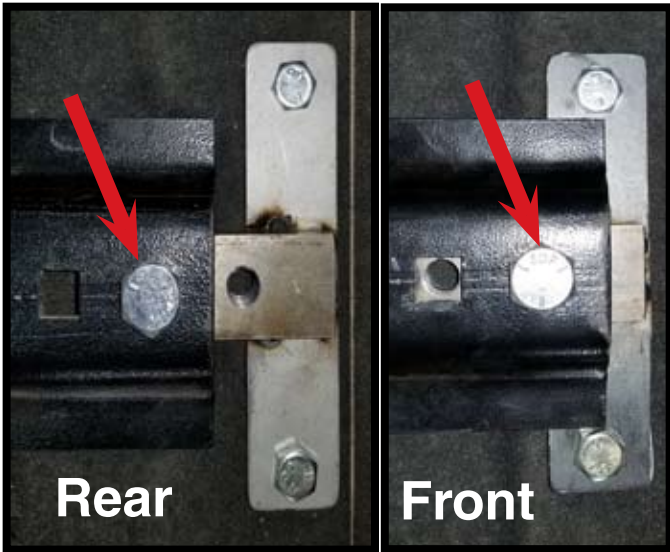
4. Remove plastic wheel well filler panels by removing three screws.



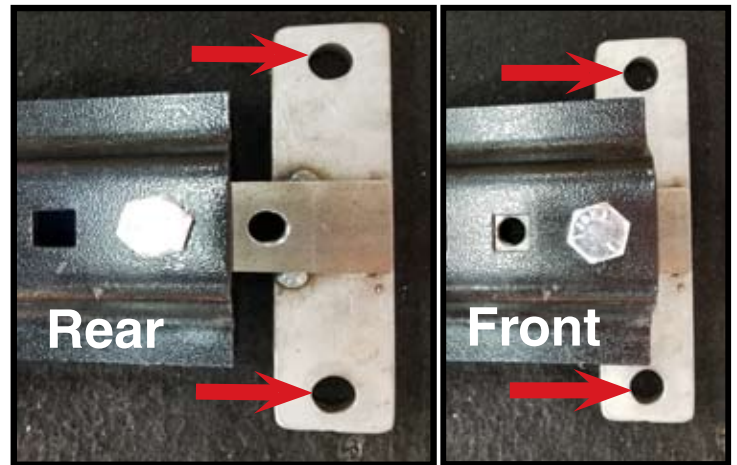
3. Remove plastic filler panel by removing four plastic push fasteners and two screws.



5. On the drivers side of the vehicle, remove two plastic clips from the frame.



HIGH IMPORTANCE! BEFORE ANY DRILLING IS DONE. MAKE SURE, THERE ARE NO OBSTRUCTIONS UNDER THE BOX!

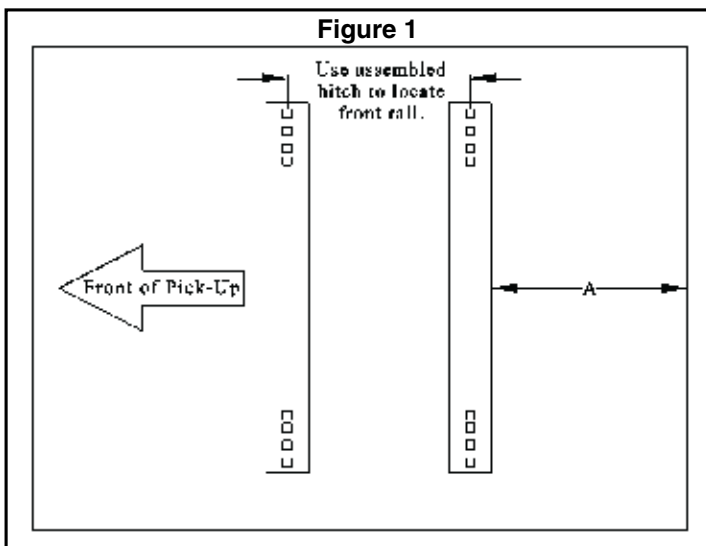


6. Bolt the rail spacers on to the end of the UL rails by using the 5/8 X 1-1/4 bolt. Apply included **LOCTITE** to these bolts and tighten making sure that rail spacers are square to the UL rail. The rear rail bolts to the first hole in the rail spacer and the front rail bolts to the second hole in the rail spacer. See pictures as shown.

Drilling instructions without template below. Drilling instructions with template on page 5.

- 7a. Fully assemble the 5th wheel hitch on a flat, level surface and pin into the base rails (*assembly instructions come with hitch components*).
- 7b. **Place assembled hitch in the truck bed between the wheel wells, center it side to side and use measurement "A" of 27 1/8" to locate the rear bed rail. See Figure 1 below for details.**

8. With the rail spacers tightened to the rail and the hitch is assembled in the center of the bed, at the correct distance from the rear of the bed. Drill the four 1/2" holes on both the passengers side and drivers side through the bed as shown in the pictures above. Place the eight 1/2 x 2" bolts in the holes just drilled.



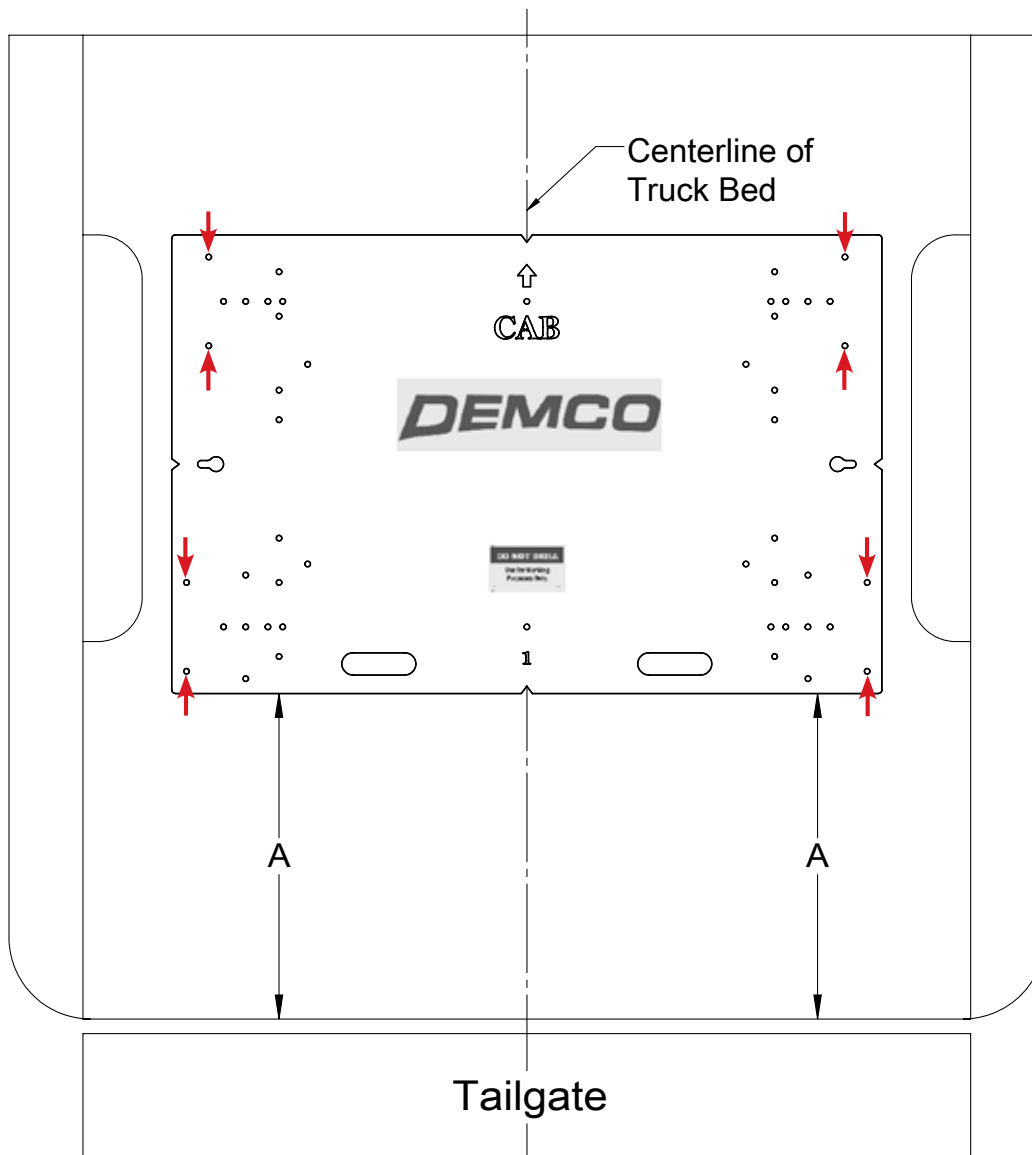
9. Slide the front and rear frame brackets over the 2" bolts and push the frame brackets tight to the bottom of the bed and tight to the frame. Clamp the frame brackets to the frame. Use the 1/2" serrated head nuts and loosely tightened the frame bracket.

***These dimensions are for Demco rails or other rails that are 5" wide overall.**

-
- 10.** Using the holes in the frame brackets, drill $17/32$ " holes in the side of the frame. The front frame brackets and the rear frame brackets will then be attached using $1/2$ " x $1\ 3/4$ " hex knurled bolts and flange nuts, that are fished through an access hole in the frame using fish wire provided in the kit. Torque all frame bracket bolts according to the chart on front page.



- 11.** Completed install.



BOX LENGTH	DIMENSIONS	MEASUREMENT
5-1/2', 6-1/2' & 8'	A	*25-1/8"
<i>*ALL MEASUREMENTS ARE FROM THE BACK OF THE BOX</i>		

Truck Bed Drilling Instructions With Template:

1. Place the template in the box and center the template between the wheel wells.
2. **IF NEEDED, TAPE THE TEMPLATE DOWN.**
3. Measure from the back of the box to the template on the passengers side and drivers side to insure that the template is square. See diagram and table above for measurements.
4. Locate which holes you will be drilling, by the ones marked with a red arrow.
5. Take a 3/8" locating punch and mark the holes to be drilled.
6. **BEFORE YOU DRILL, MAKE SURE THAT THE TEMPLATE DID NOT MOVE, AND THAT THERE ARE NO OBSTRUCTIONS IN THE WAY.**
7. Remove the template and drill the eight holes with a 1/2" drill bit. A smaller pilot hole may have to be drilled first
8. Deburr each hole.
9. Touch up the bare metal with some paint that matches the box of the truck.
10. Once these steps are completed, revert back to step 9 on page 3 to finish the install.

DEMCO

4010 320th St., Boyden, IA. 51234

Phone: (712) 725-2311

Fax: (712) 725-2380

Toll Free: 1-800-54DEMCO (1-800-543-3626)

**Demco warranty policies, operator manuals, and product registration
can be found online:**

www.demco-products.com

