

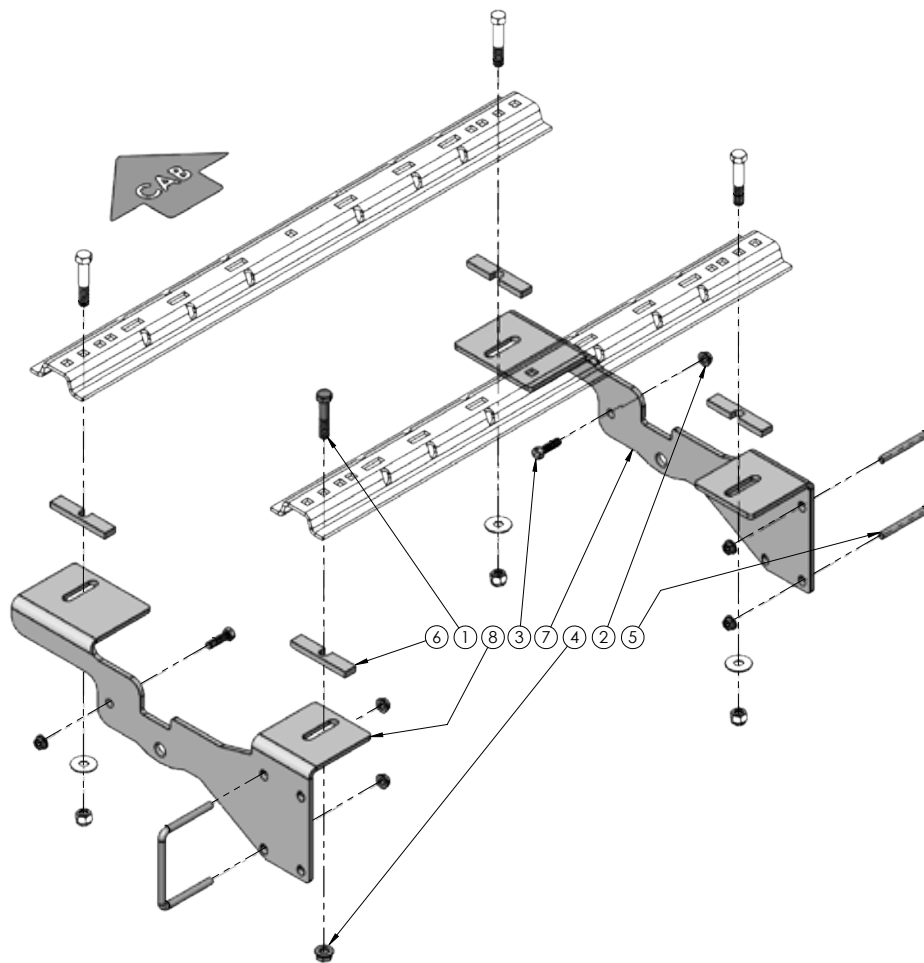


Doing Our Best to Provide You the Best

HJ32034, Rev 1
01/19

FRAME BRACKET 8552034

Chevy 1500 Pickup & GMC 1500 Pickup 5-1/2' & 6-1/2' Box



ITEM	PART #	QTY	DESCRIPTION
1	04215	1	BOLT, .625NC X 3.00 GR5 HEX
2	10379	6	1/2" UNC FLANGED NUT
3	14266	2	BOLT .50NC X 1.75 GR5 HEX KNURLED NECK
4	14340	1	5/8" NC FLANGED WHEEL NUT
5	14357	2	U-BOLT .50NC X 5.50 X 4.25 ZINC
6	15839-95	4	UL BASE SHIM
7	16684-76	1	FRAME BRACKET, PASSENGER SIDE
8	16685-76	1	FRAME BRACKET, DRIVER SIDE
-	14238	1	1/2" FISH WIRE (NOT SHOWN)
-	12329	2	LOCTITE (NOT SHOWN)
-	14334	1	BOLT, .625NC X 3.00 CARRIAGE G.5 (NOT SHOWN)
Please order replacement parts by PART NO. and DESCRIPTION.			

OPERATOR MANUAL

Installation

8552034 General Assembly & Installation Instructions

WARRANTY POLICY, OPERATOR MANUALS & REGISTRATION

Go online to www.demco-products.com to review Demco warranty policies, operator manuals and register your Demco product.

CAUTION: Do not install base rails over plastic bed liners. Plastic bed liners must be cut out of the way. Rails may be installed on spray in liners.

NOTE: All metal surfaces that come in contact with the aluminum body need to have vinyl placed in between to prevent corrosion.

NOTE: Consult spray liner installer for recommended curing time.

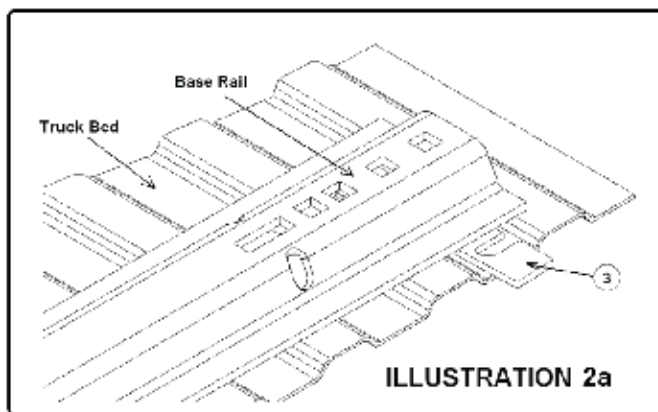
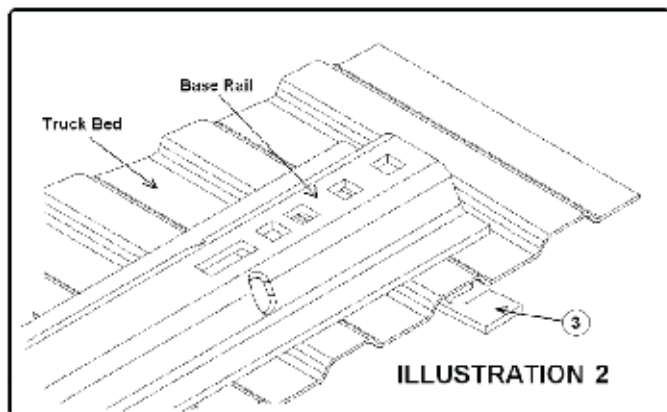
1. Fully assemble the 5th wheel hitch on a flat, level surface and pin the hitch into the base rails.

NOTE: Assembly instructions come with hitch components).

2. Place assembled hitch in the bed of the truck, centered between the wheel wells.
3. Position the base rails so that they are parallel in truck bed as shown in Drawing #1.

HIGH IMPORTANCE! BEFORE ANY DRILLING IS DONE. MAKE SURE, THERE ARE NO OBSTRUCTIONS UNDER THE BOX!

3. Start by drilling one of the marked holes and place a 5/8" standard or carriage bolt, down through the hole after drilling and before drilling next hole. This will help to stop base rails from shifting during drilling.



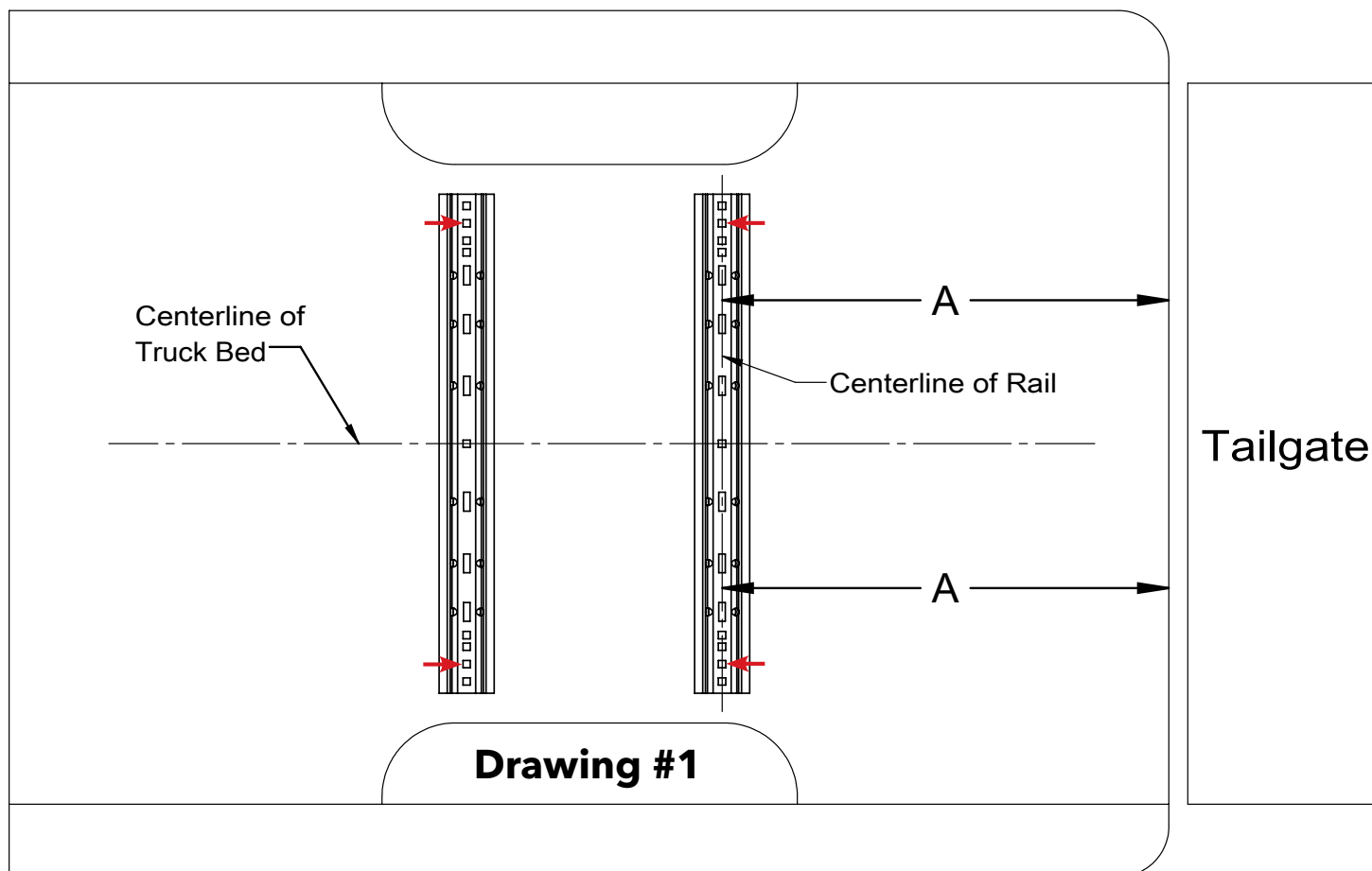
4. If the bed corrugation above the frame bracket is UP, leaving a space above the frame bracket, place a slotted spacer plate in this location as shown in Illustration 2. If the corrugation is DOWN at this location, place the slotted spacer plate in the bed, under the base rail as shown in Illustration 2a.

NOTE: Included in this kit are 1/2" thick UL base shims. Use these shims instead of the shims that come included in the 6071 kit. The reason for these shims are that the corrugation in the floor is deeper.

5. Position the left and right frame brackets up against the outer surface of the truck frame with the mounting tabs positioned over the frame and under the bed in line with previously drilled holes in bed where the 5/8" bolts are coming down through the bed.
6. Make sure the frame brackets are tight against the flat side of truck frame and underneath the surface of the truck bed with bolts extending down through slotted holes in frame bracket tabs. Thread bolts into flange head nuts.
7. Securely bolt the frame brackets into place under the truck bed. Be sure they are tight against the side of the truck frame. Tighten the 5/8" bolts according to the chart on front page.
8. Place U-bolts around the truck frame and use 1/2" flat washers and 1/2" nylon lock nuts to attach to frame bracket (see illustration 3 next page). For U-bolts to be used for long box or short box, see below illustration. Be careful to get the driver side U-bolt under the wiring loom and up against the truck frame. DO NOT PINCH WIRES UNDER THE U-BOLT.

BOLT TORQUE SPECIFICATIONS

STANDARD BOLTS			METRIC BOLTS		
Size	Grade	Torque	Size	Grade	Torque
5/16"	5	18 ft/lbs.	8mm	8.8	23 ft/lbs.
3/8"	5	30 ft/lbs.	10mm	8.8	45 ft/lbs.
7/16"	5	50 ft/lbs.	12mm	8.8	78 ft/lbs.
1/2"	5	75 ft/lbs.	14mm	8.8	125 ft/lbs.
5/8"	5	150 ft/lbs.	16mm	8.8	160 ft/lbs.
3/4"	5	290 ft/lbs.			

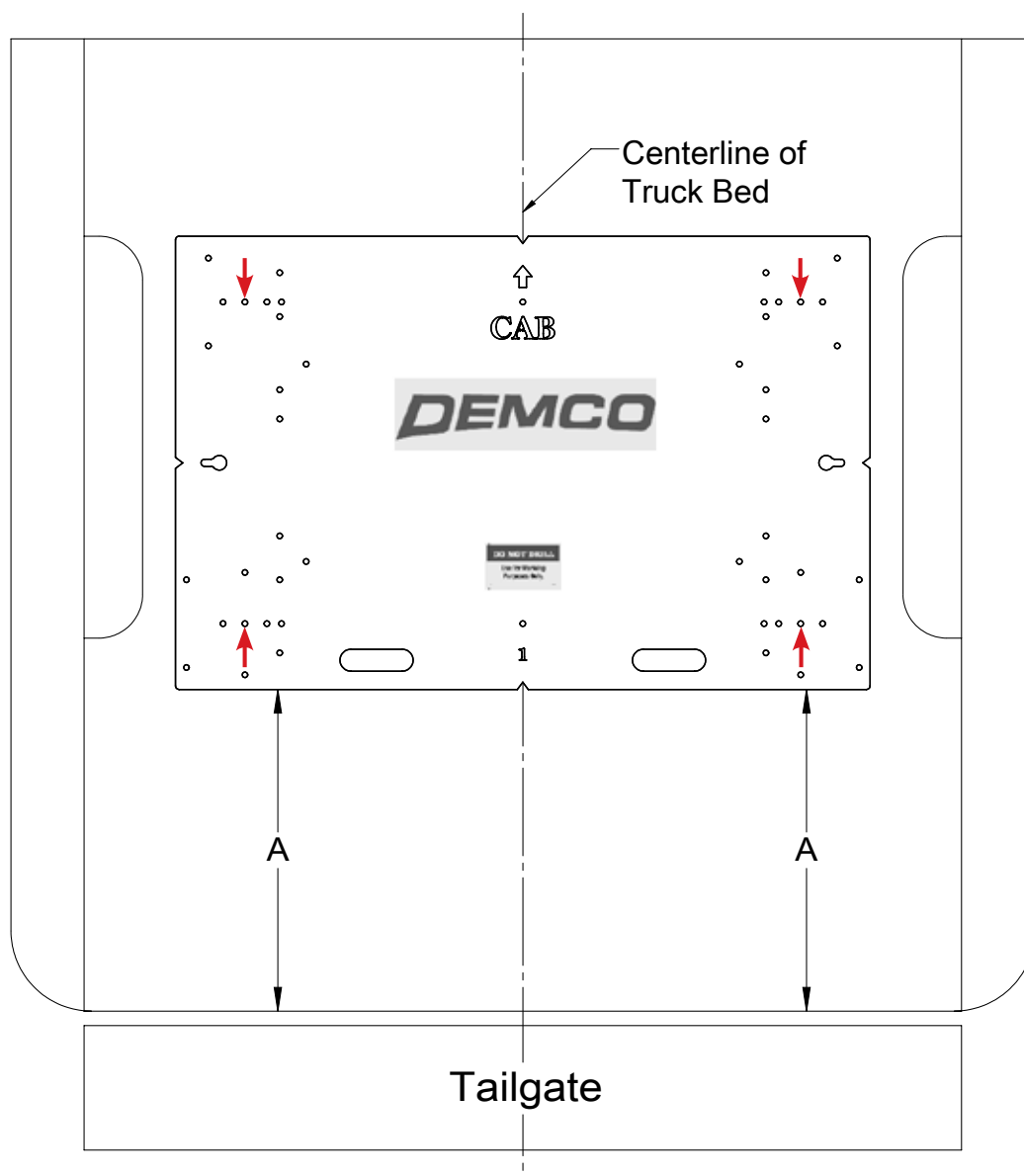


BOX LENGTH	DIMENSIONS	MEASUREMENT
5-1/2'	A	*28"
6-1/2'	A	*28"
8'	A	*N/A
*ALL MEASUREMENTS ARE FROM THE BACK OF THE BOX		

Installation

Truck Bed Drilling Instructions with Template

1. Place the template in the box and center the template between the wheel wells.
2. **IF NEEDED, TAPE THE TEMPLATE DOWN.**
3. Measure from the back of the box to the template on the passengers side and drivers side to insure that the template is square. See drawing #2 and table on page 5 for measurements.
4. Locate which holes you will be drilling, by the ones marked with a red arrow.
5. Take a 3/8" locating punch and mark the holes to be drilled.
6. **BEFORE YOU DRILL, MAKE SURE THAT THE TEMPLATE DID NOT MOVE, AND THAT THERE ARE NO OBSTRUCTIONS IN THE WAY.**
7. Remove the template and drill the four marked holes with a 5/8" hole saw.
8. Deburr each hole.
9. Touch up the bare metal with some paint that matches the box of the truck.



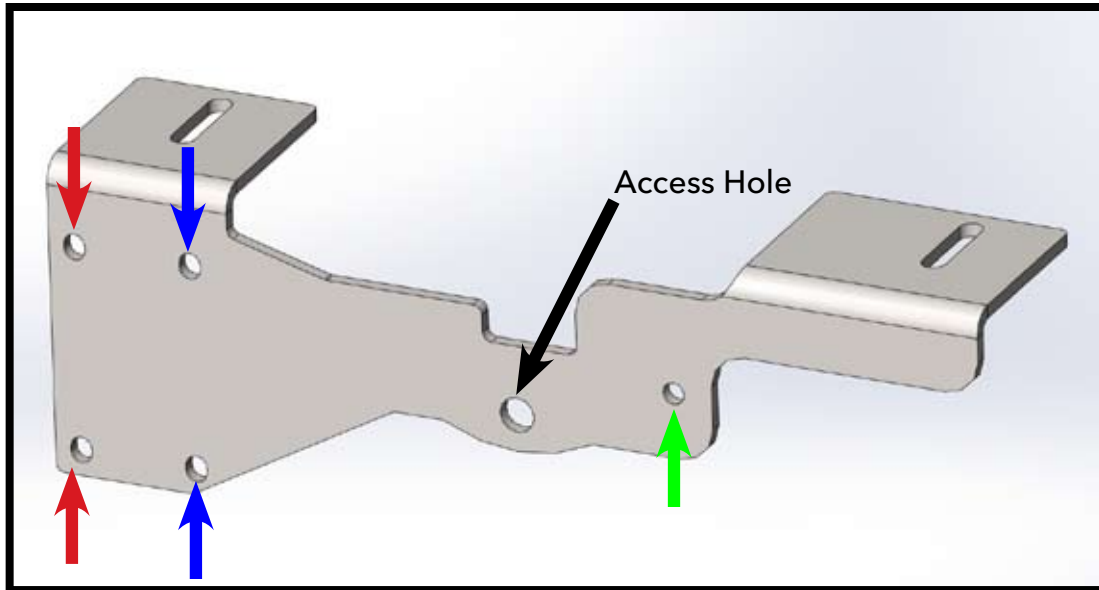
Drawing #2

BOX LENGTH	DIMENSIONS	MEASUREMENT
5-1/2'	A	*23"
6-1/2'	A	*23"
8'	A	*N/A
*ALL MEASUREMENTS ARE FROM THE BACK OF THE BOX		

Installation

Frame Bracket Installation

1. Remove the rear tires.
2. If equipped, remove the rear wheel well liners.
3. Check the inside of the frame to be sure that there are no wires, brake lines or other obstructions in the frame that may contact the drill.



Passenger side shown

4. Each of the frame brackets must be attached to the side frame of the truck with a special 1/2" x 1 3/4" knurled bolt at the forward hole, as shown by the green arrow and a U-bolt at the rear hole. Be sure frame bracket access hole is over large slot in truck frame.

NOTE: The red arrow shows where the U-bolt should go on the passengers side. The blue arrow shows where the U-bolt should go on the drivers side.



Passengers side shown

5. Clamp each frame bracket to the frame to help with the install.

6. At the front attachment point, drill a 17/32" hole through the side of the truck frame using the hole in each frame bracket as a guide.

CAUTION: Holes **MUST** be drilled to 17/32" diameter, so that the special knurl bolts will seat properly. If the holes are too small, the bolt may break. If the holes are too large, it will not grip properly.

7. Fish the fish wire through the access hole in the frame bracket and then out through the drilled hole at the front of the frame brackets. Thread the knurl bolt in the fish wire and pull the bolt through the frame and frame bracket. Secure each bracket to the truck frame. The knurled portion of the bolts will lock into the frame holes as the nuts are tightened.
8. Tighten all bolts according to chart on front page. Failure to tighten bolts as described may result in fastener loss or failure.
9. Tighten and torque all bolts to the chart on the top of page 3.
10. Re-install the rear wheels and rear wheel well liners (if removed), double check all fasteners for tightness, and lower truck (if raised).



4010 320th St., Boyden, IA. 51234

Phone: (712) 725-2311

Fax: (712) 725-2380

Toll Free: 1-800-54DEMCO (1-800-543-3626)

**Demco warranty policies, operator manuals, and product registration
can be found online:**

www.demco-products.com

