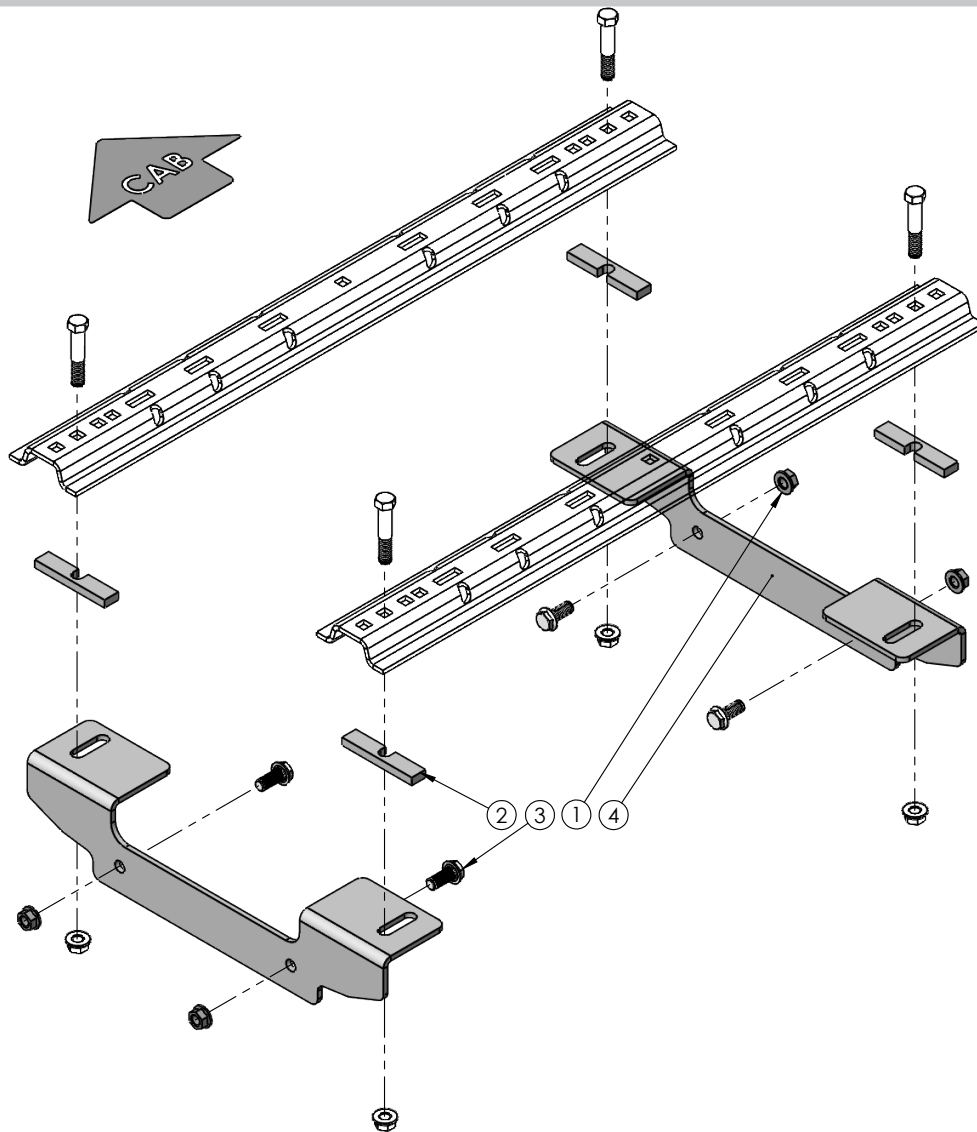


FRAME BRACKET 8552037

2020 Chevy/GMC 2500 HD & 3500 HD 6-1/2' Box



ITEM	PART #	QTY	DESCRIPTION
1	14340	4	NUT .625 NC SERRATED FLG. HEX
2	15839-95	4	UL BASE SHIM
3	16690	4	BOLT, .625NC X 1.50 SERR FLG HEX HD
4	16855-76	2	FRAME BRACKET
-	14210	1	5/8" FISH WIRE (NOT SHOWN)
-	12329	2	LOCTITE (NOT SHOWN)

Please order replacement parts by **PART NO.** and **DESCRIPTION.**

Installation

8552037 General Assembly & Installation Instructions

WARRANTY POLICY, OPERATOR MANUALS & REGISTRATION

Go online to www.demco-products.com to review Demco warranty policies, operator manuals and register your Demco product.

READ THROUGH THE ENTIRE MANUAL BEFORE BEGINNING INSTALLATION!

CAUTION:

Do not install base rails over plastic bed liners. Plastic bed liners must be cut out of the way. Rails may be installed on spray in liners.

Consult spray liner installer for recommended curing time.

All metal surfaces that come in contact with the aluminum body need to have vinyl placed in between to prevent corrosion.

1. Fully assemble the 5th wheel hitch on a flat, level surface and pin the hitch into the base rails.

NOTE: Assembly instructions come with hitch components.

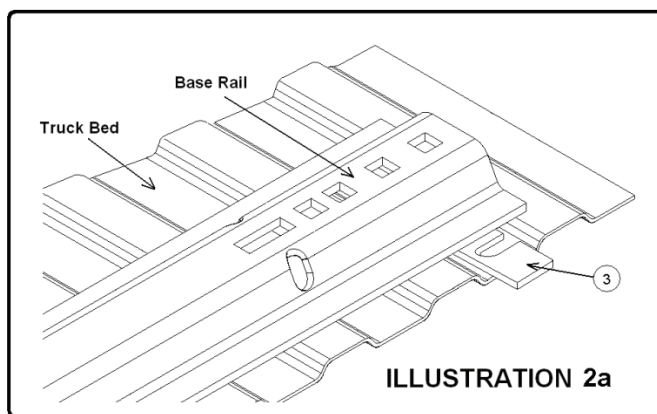
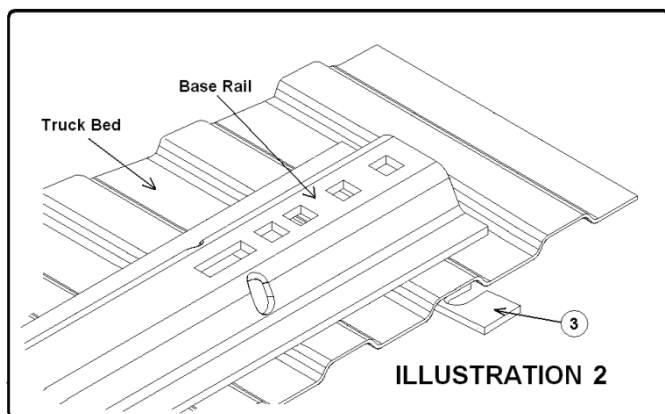
2. Place assembled hitch in the bed of the truck, centered between the wheel wells.

3. Position the base rails so that they are parallel in truck bed as shown in Drawing #1.

4. Use Drawing #1 and Table #1 to find the vehicles box length and dimension from the rear of the truck.

IF EQUIPPED WITH A HEAT SHIELD, FIND HEAT SHIELD INSTRUCTIONS IN MANUAL BEFORE DRILLING ANY HOLES. IF THERE ARE NO INSTRUCTIONS ON THE HEAT SHIELD, PROCEED WITH THE INSTALLATION.

HIGH IMPORTANCE! BEFORE ANY DRILLING IS DONE. MAKE SURE, THERE ARE NO OBSTRUCTIONS UNDER THE BOX!



5. If the bed corrugation above the frame bracket is UP, leaving a space above the frame bracket, place a slotted spacer plate in this location as shown in Illustration 2. If the corrugation is DOWN at this location, place the slotted spacer plate in the bed, under the base rail as shown in Illustration 2a.

NOTE: Do not use the shims that come in the 6071 kit, Use the shims that come in this kit.

6. Start by drilling one of the marked holes in the base rail closes to the tailgate, with a 5/8" drill bit.

7. Place a 5/8" standard bolt or a 5/8" carriage bolt down through the hole before drilling the next holes.

NOTE: This will help to stop base rails from shifting.

8. Make sure that the base rails did not shift.

9. Drill the other marked hole in the base rail closes to the tailgate.

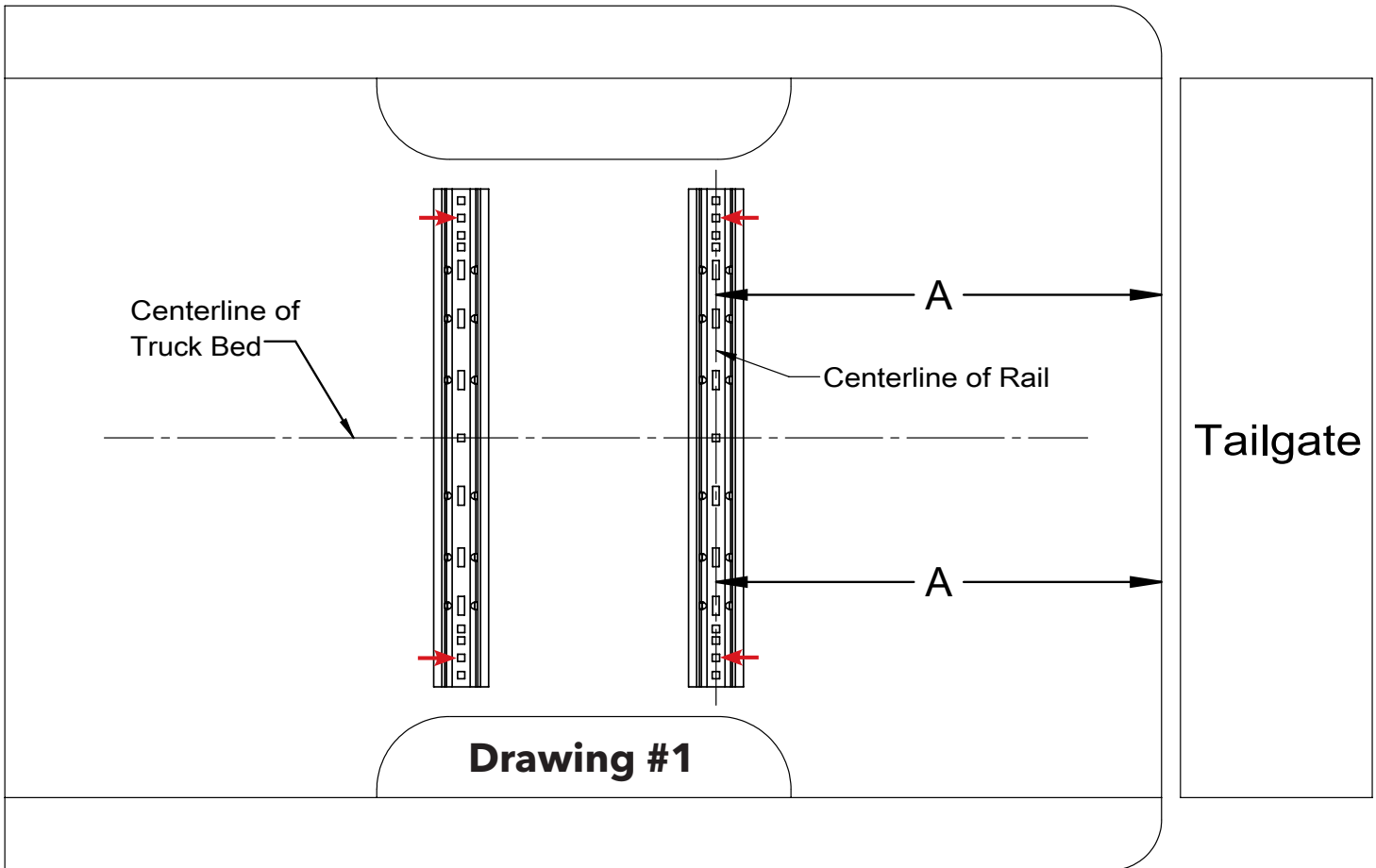
10. Place another 5/8" standard bolt or 5/8" carriage bolt down through the drilled hole.

11. Once these holes are drilled and the bolts are down through the box, Drill the other two marked holes in the base rail closes to the cab.

12. Place the remaining 5/8" standard bolt or 5/8" carriage bolts down through the drilled holes.

BOLT TORQUE SPECIFICATIONS

STANDARD BOLTS			METRIC BOLTS		
Size	Grade	Torque	Size	Grade	Torque
5/16"	5	18 ft/lbs.	8mm	8.8	23 ft/lbs.
3/8"	5	30 ft/lbs.	10mm	8.8	45 ft/lbs.
7/16"	5	50 ft/lbs.	12mm	8.8	78 ft/lbs.
1/2"	5	75 ft/lbs.	14mm	8.8	125 ft/lbs.
5/8"	5	150 ft/lbs.	16mm	8.8	160 ft/lbs.
3/4"	5	290 ft/lbs.			



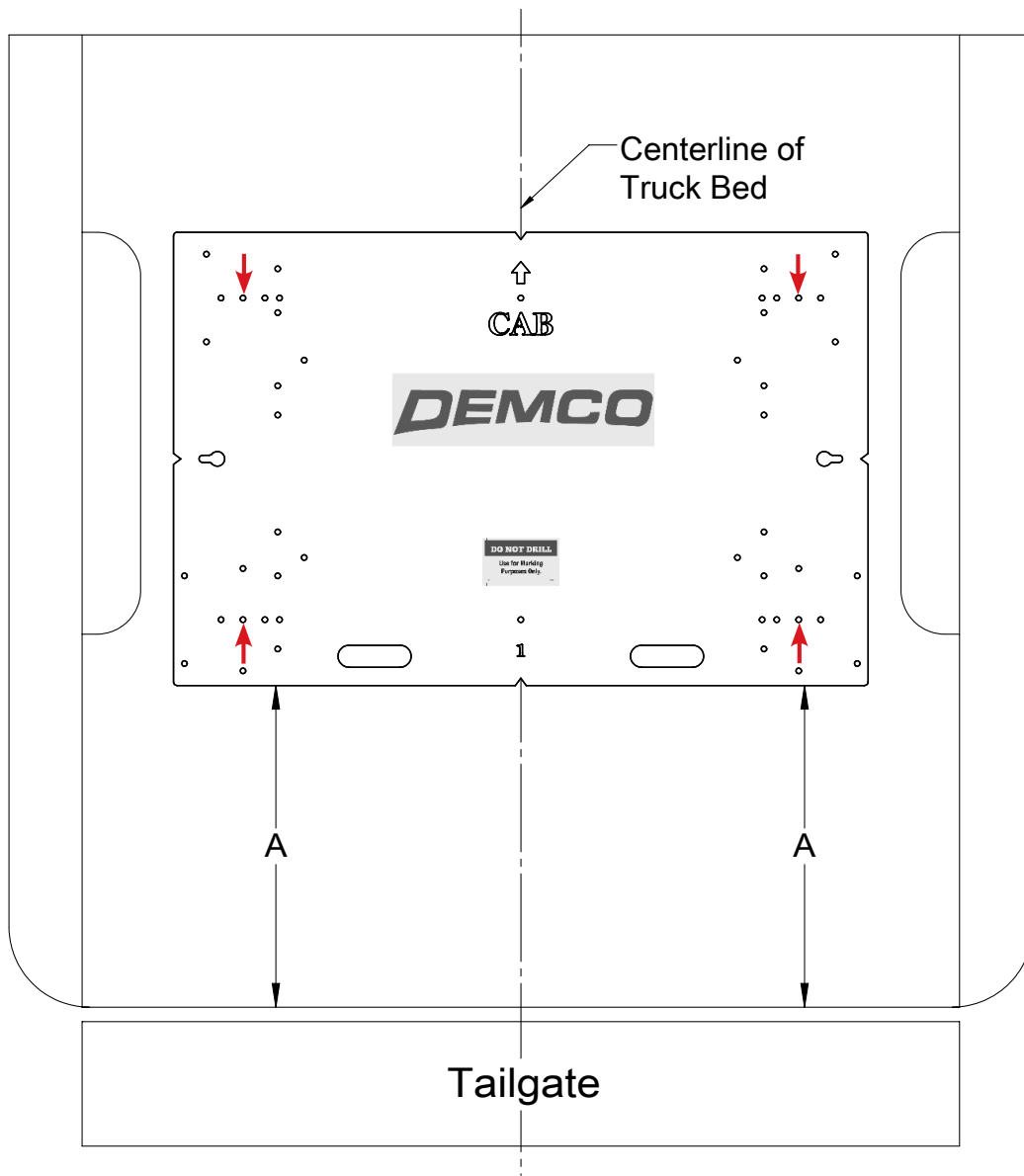
Drawing #1

BOX LENGTH	DIMENSIONS	MEASUREMENT
6-1/2'	A	*29-5/8"
8'	A	N/A
*ALL MEASUREMENTS ARE FROM THE BACK OF THE BOX		

Table #1

Truck Bed Drilling Instructions with Template

1. Place the template in the box and center the template between the wheel wells.
2. **IF NEEDED, TAPE THE TEMPLATE DOWN.**
3. Measure from the back of the box to the template on the passengers side and drivers side to insure that the template is square. See drawing #1 and table for measurements.
4. Locate which holes you will be drilling, by the ones marked with a red arrow.
5. Take a 3/8" locating punch and mark the holes to be drilled.
6. **BEFORE YOU DRILL, MAKE SURE THAT THE TEMPLATE DID NOT MOVE, AND THAT THERE ARE NO OBSTRUCTIONS IN THE WAY.**
7. Remove the template and drill the four marked holes with a 5/8" drill bit.
NOTE: A pilot hole may need to be drilled.
8. Deburr each hole.
9. Touch up the bare metal with some paint that matches the box of the truck.



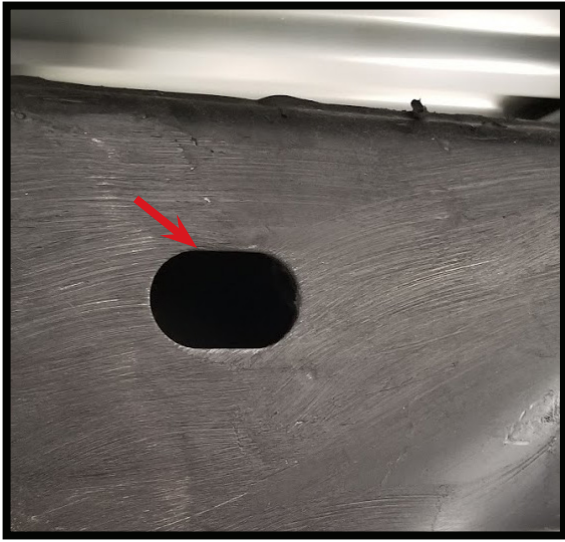
Drawing #2

BOX LENGTH	DIMENSIONS	MEASUREMENT
6-1/2'	A	*25-1/8"
8'	A	N/A
*ALL MEASUREMENTS ARE FROM THE BACK OF THE BOX		

Installation

Frame Bracket Installation

1. Remove the rear tires.
2. If equipped, remove the rear, wheel well liners.
3. Center the bolts, that are coming down from the bed, in the slots in the frame brackets as best as possible and slide the frame brackets up tight to the bottom of the bed and tight to the frame. Clamp the brackets to the frame.
4. Loosely tighten the 5/8" serrated nuts onto the bolts.
5. Using the holes in the frame brackets as a guide, drill the holes in the frame with a 11/16" drill bit.
NOTE: A pilot hole maybe needed.



Outside of frame: One of the access holes is on the outside of frame. This access hole might have to be trimmed larger to fit the head of the bolt through.



Inside of frame: The other access holes are on the inside of frame. These holes are located right behind the bracket. No trimming is need, but you may have to move some steel lines out of the way to fish the bolts through.

6. Using the 5/8" fish wire, fish the 5/8" serrated head bolts through one of the access holes in the frame. See pictures above.
7. Tighten all 5/8" serrated nuts. LOCTITE and torque all the nuts to the chart located on the top of page 3.
8. Re-install the rear wheels and rear wheel well liners (if removed), double check all fasteners for tightness..
9. Unlock and lift the hitch assembly out of the box to make sure it can be removed and inserted with relative ease.

DEMCO

4010 320th St., Boyden, IA. 51234

Phone: (712) 725-2311

Fax: (712) 725-2380

Toll Free: 1-800-54DEMCO (1-800-543-3626)

**Demco warranty policies, operator manuals, and product registration
can be found online:**

www.demco-products.com

