



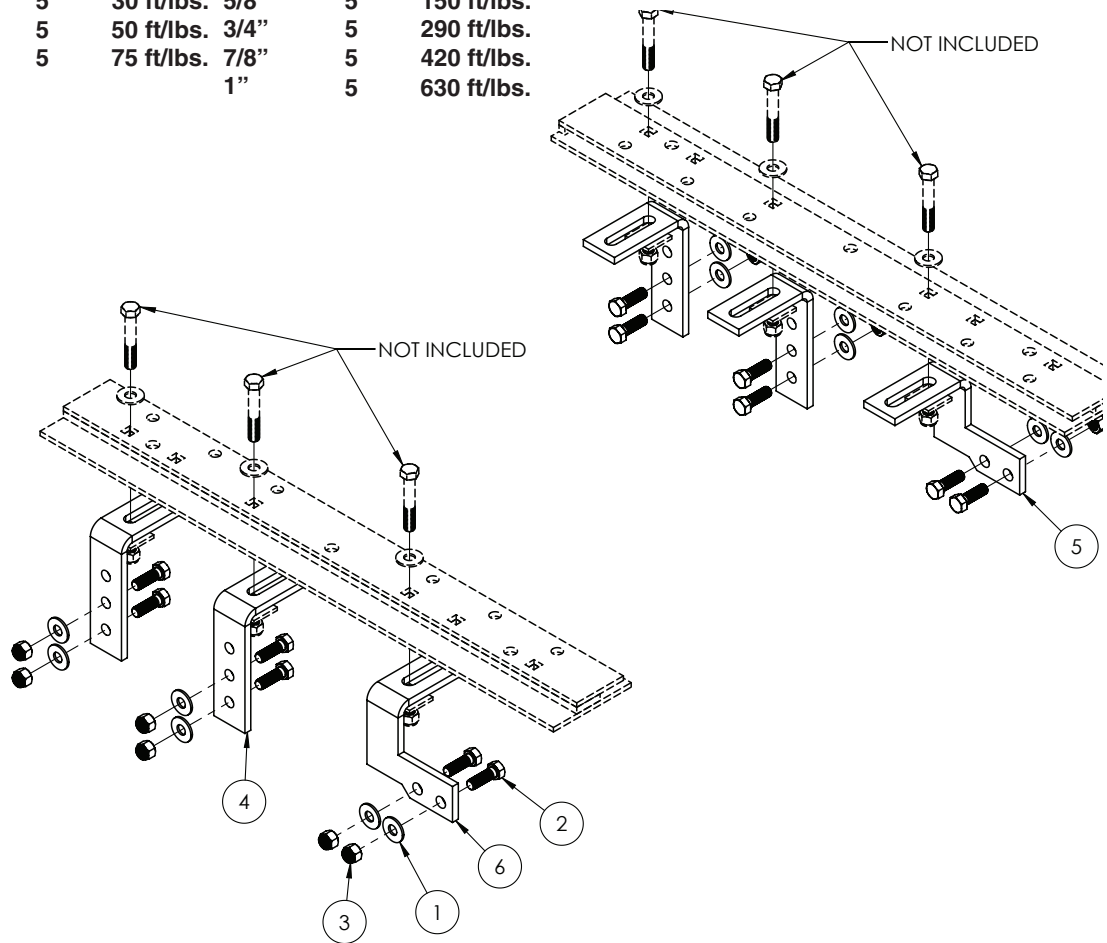
Ford

BOLT TORQUE SPECIFICATIONS

STANDARD BOLTS:

Size	Grade	Torque	Size	Grade	Torque
5/16"	5	18 ft/lbs.	9/16"	5	115 ft/lbs.
3/8"	5	30 ft/lbs.	5/8"	5	150 ft/lbs.
7/16"	5	50 ft/lbs.	3/4"	5	290 ft/lbs.
1/2"	5	75 ft/lbs.	7/8"	5	420 ft/lbs.
			1"	5	630 ft/lbs.

FRAME BRACKET



8553001 PARTS LIST

REF. NO.	PART NO.	QTY.	DESCRIPTION
1.	00085	12	1/2" Flat Washer
2.	01254	12	1/2" -NC x 1 1/2" Hex Bolt Gr.5
3.	02178	12	1/2" -NC Nylon Lock Nut
4.	14189-76	4	411 Frame Bracket
5.	14236-76	1	Passenger Side Frame Bracket
6.	14237-76	1	Drive Side Frame Bracket

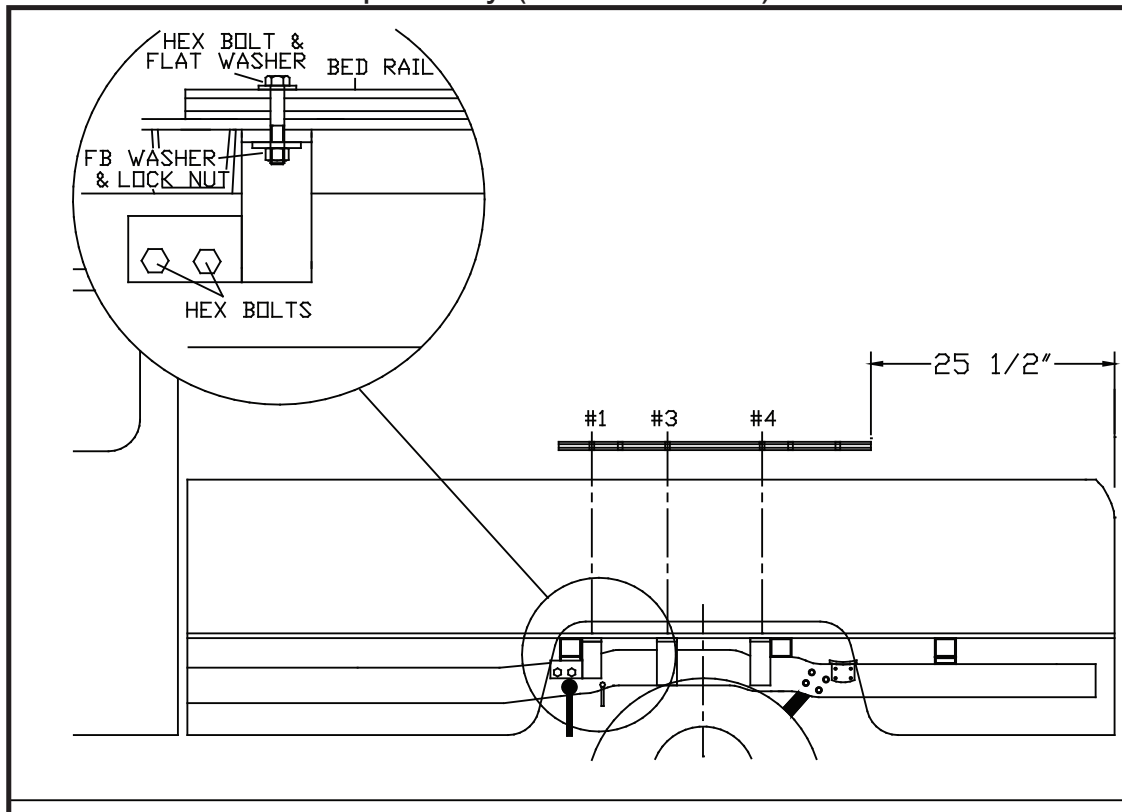
Please order replacement parts by **PART NO.** and **DESCRIPTION.**

ASSEMBLY
OPERATION
REPLACEMENT PARTS

READ complete manual CAREFULLY
BEFORE attempting operation.

Doing Our Best to Provide You the Best

FORD: 2005-2010 F250/350 Super Duty (6 1/2' & 8' Box)
2008-2010 F450 Super Duty (6 1/2' & 8' Box)



INSTALLATION

- Completely assemble hitch. See GENERAL INSTRUCTIONS and SAFETY supplied.
 - Set hitch into back of truck, center it side to side.
 - Measure 25 1/2" from back edge of truck box to back edge of bed rail.
- Check underneath box at bolt hole locations for any obstructions (frame members, etc.).
- Drill two 17/32" holes thru HOLE #1, each bed rail.
 - Insert two 1/2" x 3" (04073) long hex bolts.
 - Drill thru HOLES #3 and #4, each bed rail. Insert four 1/2" x 3" hex bolts.
- Under box, place (14189-76) frame brackets onto hex bolts (four places), (14236-76) frame bracket (Hole #1), and (14237-76) frame bracket (Hole #1).
 - Loosely install frame washer (14235-95), 1/2" flat washer (00085), and 1/2" Nylon lock nut (02178).
 - Press each bracket tight against frame member, tighten nuts snug against box.
- Pilot drill* and drill 1/2" hole into truck frame, at two places thru holes in each frame bracket -- BE CAREFUL OF ELECTRIC OR FLUID LINES behind frame members.
 - Fasten brackets with 1/2" x 1 1/2" (01254) bolts, flat washers (00085), and nuts (02178).
 - TIGHTEN ALL BOLTS ACCORDING TO CHART ON FRONT PAGE.**

* To pilot drill: Use 1/2" drill bit or transfer punch to mark center. Drill thru with 1/4" drill.

Demco

4010 320th St., BOYDEN, IA. 51234

PH: (712) 725-2311

FAX: (712) 725-2380

TOLL FREE: 1-800-54DEMCO (1-800-543-3626)

www.demco-products.com

Go online to www.demco-products.com for Demco warranty policies, operator manuals & product registration.