



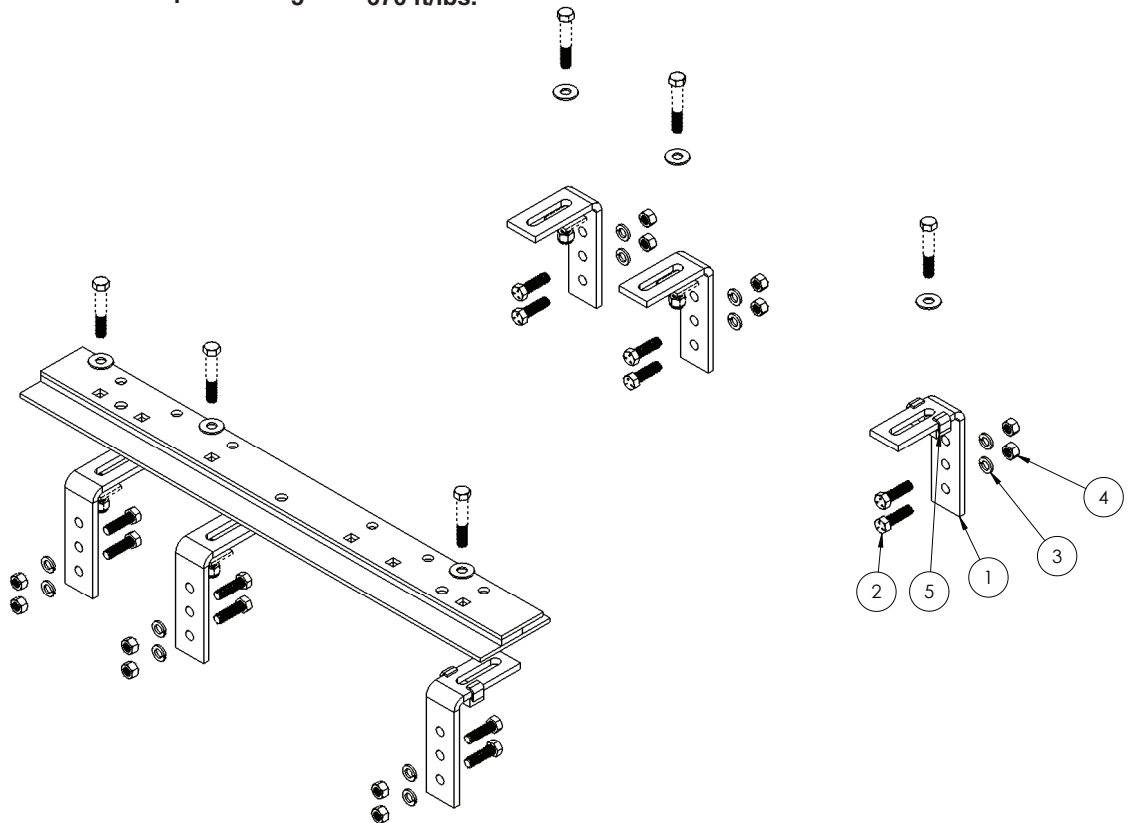
Ford

BOLT TORQUE SPECIFICATIONS

STANDARD BOLTS:

Size	Grade	Torque	Size	Grade	Torque
5/16"	5	20 ft/lbs.	9/16"	5	123 ft/lbs.
3/8"	5	35 ft/lbs.	5/8"	5	170 ft/lbs.
7/16"	5	56 ft/lbs.	3/4"	5	305 ft/lbs.
1/2"	5	85 ft/lbs.	7/8"	5	445 ft/lbs.
			1"	5	670 ft/lbs.

FRAME BRACKET



8553005 PARTS LIST

REF. NO.	PART NO.	QTY.	DESCRIPTION
1.	14189-76	6	411 Frame Bracket
2.	14266	12	1/2" NC x 1-3/4" Hex Bolt (knurled neck) Gr.5
3.	00084	12	1/2" Lock Washer
4.	00083	12	1/2" NC Hex Nut
5.	14193-76	2	Slider Block Threaded
6.	14238	1	1/2" Fish Wire (not shown)

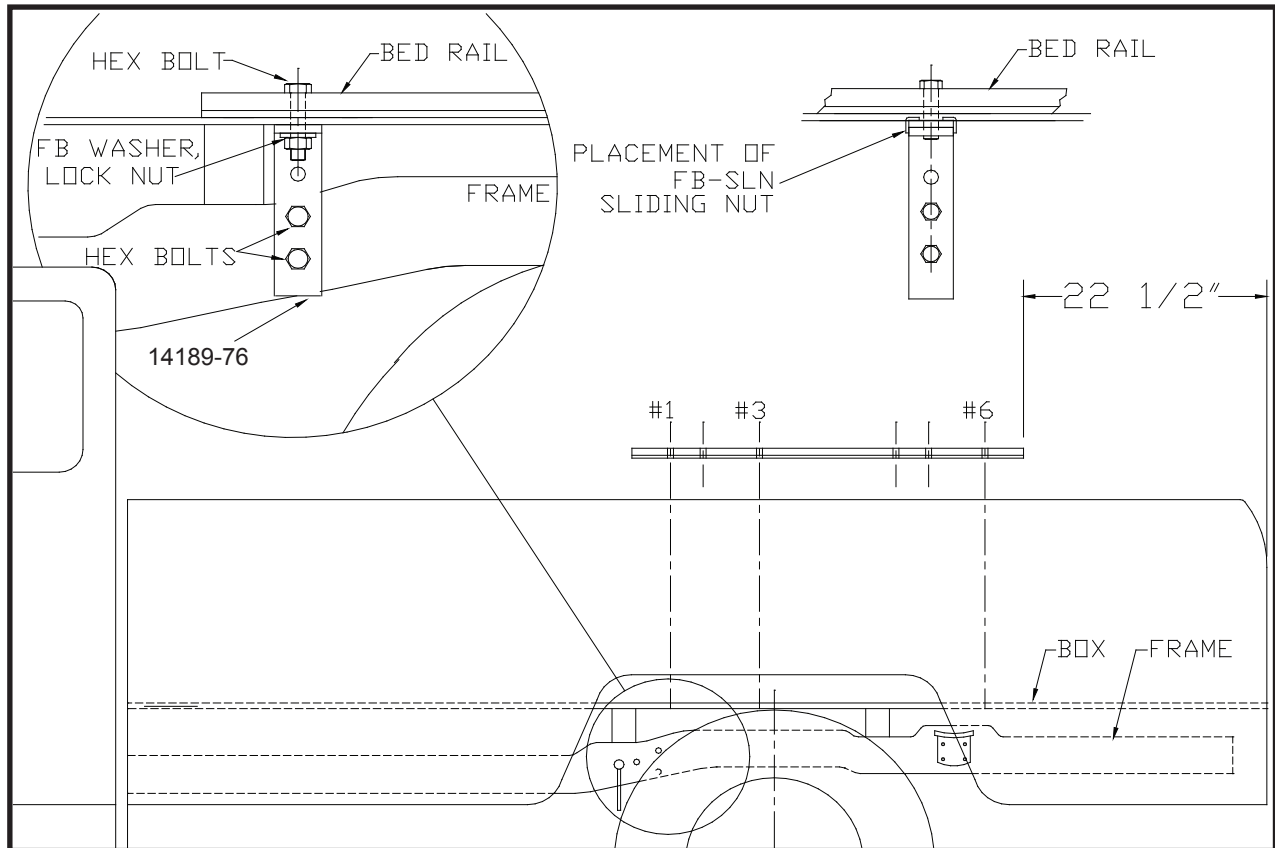
Please order replacement parts by **PART NO.** and **DESCRIPTION.**

ASSEMBLY
OPERATION
REPLACEMENT PARTS

READ complete manual **CAREFULLY**
BEFORE attempting operation.

Doing Our Best to Provide You the Best

FORD: 1989-1996 F150 & F250 (6 1/2' & 8' Box)
 HIJACKER HITCH: 24-SL



INSTALLATION

1. a. Completely assemble hitch. See GENERAL INSTRUCTIONS and SAFETY supplied.
 b. Set hitch into back of truck, center it side to side.
 c. Measure 22 1/2" from back edge of truck box to back edge of bed rail.
2. a. First check for obstructions under box, then drill two 17/32" holes thru HOLE #1 in each bed rail.
 b. Insert two 1/2" x 3" hex bolts.
 c. Drill thru HOLES #3 & #6 in each bed rail. Insert four remaining hex bolts.
3. a. Under box, place frame brackets (14189-76) onto hex bolts (6 places).
 b. Loosely install 1 1/2" washer on bolts #1 & #3 and threaded slider block (14193-76) on 2 rear bolts #6 and lock nuts.
 c. Press each bracket tight against frame member, tighten nuts snug against box.
4. a. Pilot drill* and drill 1/2" hole into truck frame, at two places thru holes each frame bracket -- BE CAREFUL OF ELECTRIC OR FLUID LINES behind frame members.
 b. Fasten brackets with 1/2" x 1 3/4" (14266) knurl bolts, 1/2" nuts (00083) and 1/2" lock washers (00084).
 c. TIGHTEN ALL BOLTS ACCORDING TO CHART ON FRONT PAGE.

* To pilot drill: Use 1/2" drill bit or transfer punch to mark center. Drill thru with 1/4" drill.



4010 320th St., P.O. BOX 189, BOYDEN, IA. 51234
 PH: (712) 725-2311
 FAX: (712) 725-2380 or 1-800-845-6420
 TOLL FREE: 1-800-54DEMCO (1-800-543-3626)
 www.towdemco.com