



TOYOTA

1-13  
HJ33012, Rev 0

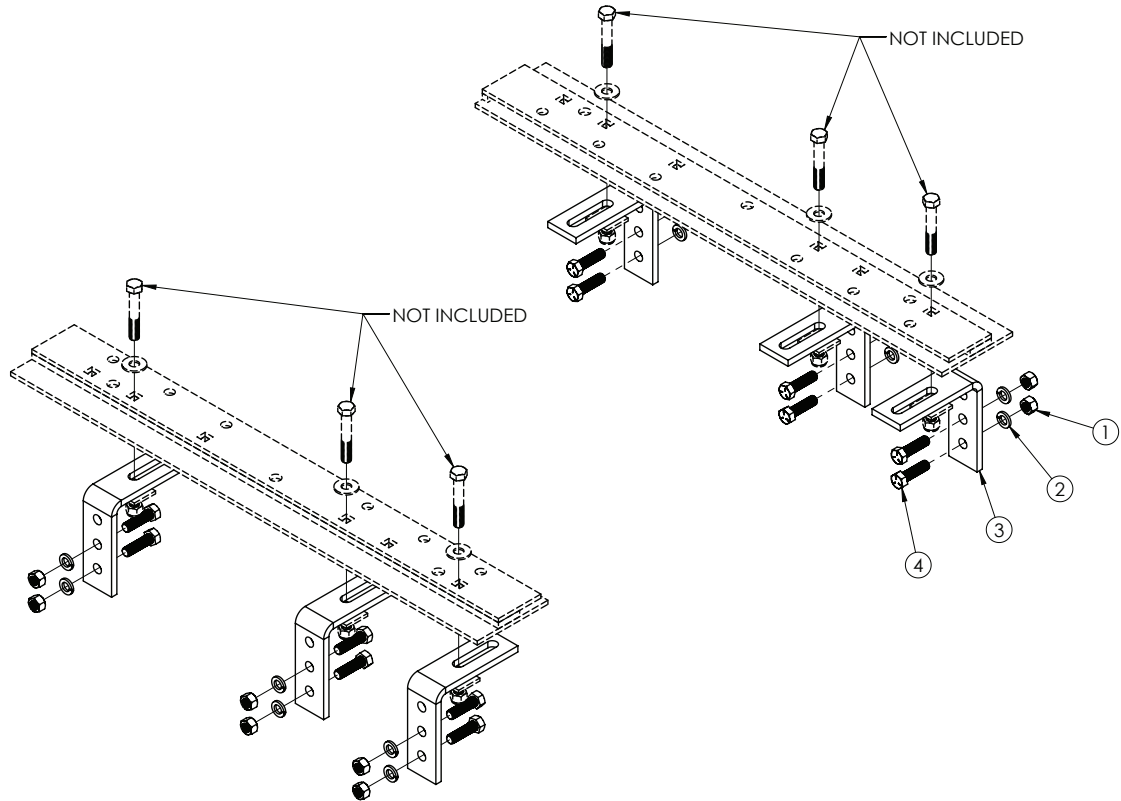


**BOLT TORQUE SPECIFICATIONS**

**STANDARD BOLTS:**

Size	Grade	Torque	Size	Grade	Torque
5/16"	5	20 ft/lbs.	9/16"	5	123 ft/lbs.
3/8"	5	35 ft/lbs.	5/8"	5	170 ft/lbs.
7/16"	5	56 ft/lbs.	3/4"	5	305 ft/lbs.
1/2"	5	85 ft/lbs.	7/8"	5	445 ft/lbs.
			1"	5	670 ft/lbs.

# FRAME BRACKET



**8553012 PARTS LIST**

REF. NO.	PART NO.	QTY.	DESCRIPTION
1.	00083	12	1/2" -NC Hex Nut
2.	00084	12	1/2" Lock Washer
3.	14191-76	6	411C Frame Bracket
4.	14266	12	1/2"-NC x 1 3/4" Hex Bolt Knurled Gr.5
5.	14238	1	1/2" Fish Wire (not shown)

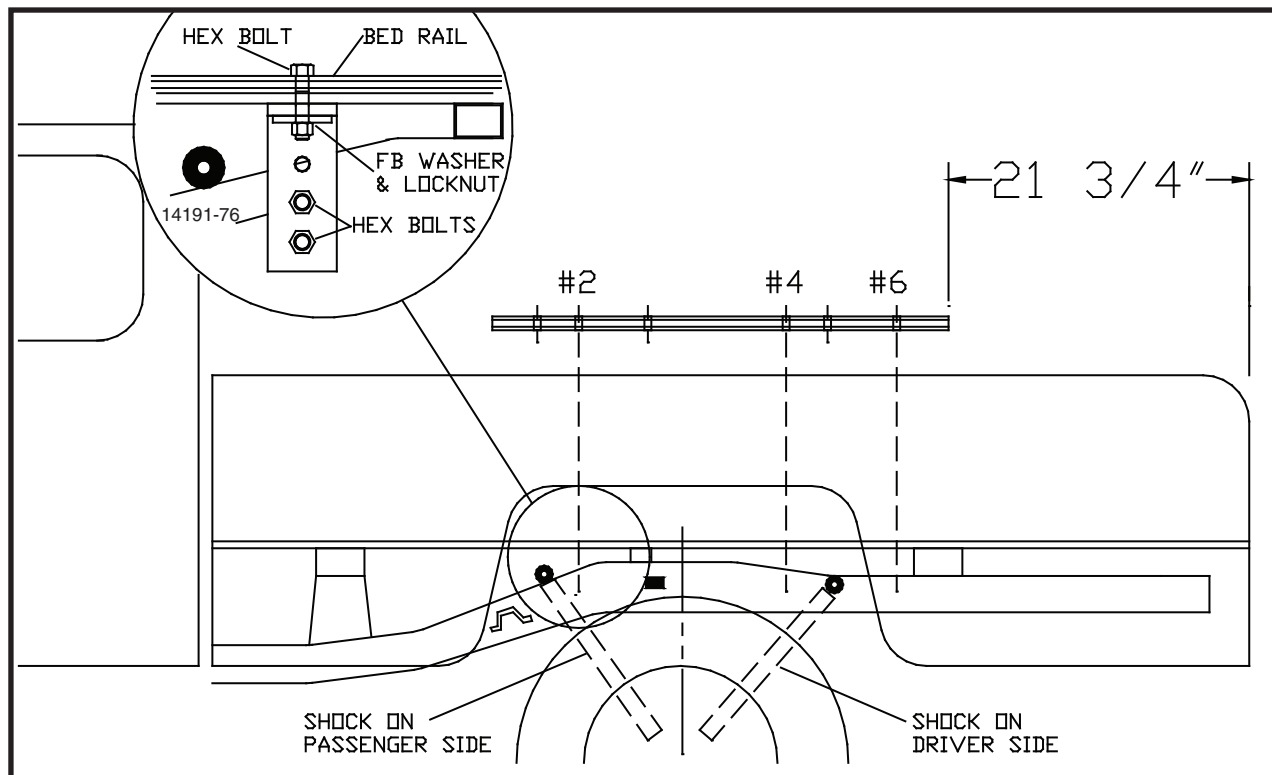
Please order replacement parts by **PART NO.** and **DESCRIPTION.**

ASSEMBLY  
OPERATION  
REPLACEMENT PARTS

**READ** complete manual *CAREFULLY*  
*BEFORE* attempting operation.

Doing Our Best to Provide You the Best

TOYOTA: 1998-2001 Tacoma Regular & Extended Cab (includes 4x4)  
HIJACKER HITCH: 24-SL

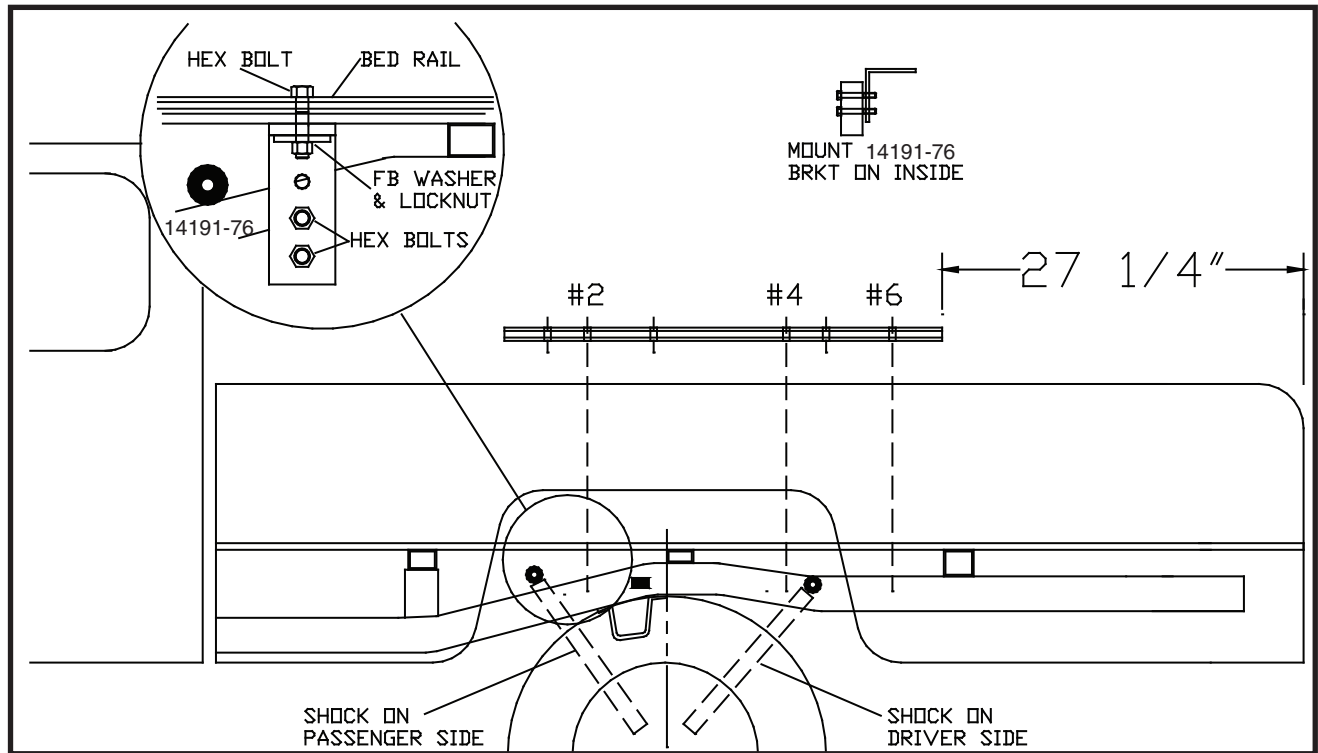


## INSTALLATION

- Completely assemble hitch. See GENERAL INSTRUCTIONS and SAFETY supplied.
  - Set hitch into back of truck, center it side to side.
  - Measure 21 3/4" from back edge of truck box to edge of bed rail. This places hitch 1 1/2" ahead of axle.
- Check underneath box at bolt hole locations for any obstructions (frame members, etc.)
- Drill two 17/32" holes thru HOLE #2 of each bed rail.
  - Insert two 1/2" x 3" hex bolts.
  - Drill thru HOLES #4 & #6 of each bed rail. Insert four remaining hex bolts.
- Under box, place 411C frame brackets (14191-76) onto hex bolts (6 places).
  - Loosely install 1 1/2" square washers & lock nuts.
  - Press each bracket tight against frame member; tighten nuts snug against box.
- Pilot drill\* and drill 1/2" holes into truck frame, at two places thru each frame bracket--BE CAREFUL OF ELECTRIC OR FLUID LINES behind frame members.
  - Fasten brackets with 1/2" x 1 3/4" hex bolts (14266), nuts (00083) and lock washers (00084).
  - TIGHTEN ALL BOLTS ACCORDING TO CHART ON FRONT PAGE.

\* To pilot drill: Use 1/2" drill bit or transfer punch to mark center. Drill thru with 1/4" drill.

TOYOTA: 2000 & Earlier T100 Regular & Extended Cab (includes 4x4)  
HIJACKER HITCH: 24-SL



## INSTALLATION

- Completely assemble hitch. See GENERAL INSTRUCTIONS and SAFETY supplied.
  - Set hitch into back of truck, center it side to side.
  - Measure 27 1/4" from back edge of truck box to edge of bed rail. This places hitch directly over axle.
- Check underneath box at bolt hole locations for any obstructions (frame members, etc.)
- Drill two 17/32" holes thru HOLE #2 of each bed rail.
  - Insert two 1/2" x 3" hex bolts.
  - Drill thru HOLES #4 & #6 of each bed rail. Insert four remaining hex bolts.
- Under box, place 411C frame brackets (14191-76) onto hex bolts (6 places).
  - Loosely install 1 1/2" square washers & lock nuts.
  - Press each bracket tight against frame member; tighten nuts snug against box.
- Pilot drill\* and drill 1/2" holes into truck frame, at two places thru each frame bracket--BE CAREFUL OF ELECTRIC OR FLUID LINES behind frame members.
  - Fasten brackets with 1/2" x 4" hex bolts (not supplied), nuts (00083) and lock washers (00084).
  - TIGHTEN ALL BOLTS ACCORDING TO CHART ON FRONT PAGE.

\* To pilot drill: Use 1/2" drill bit or transfer punch to mark center. Drill thru with 1/4" drill.



4010 320th St., P.O. BOX 189, BOYDEN, IA. 51234  
PH: (712) 725-2311  
FAX: (712) 725-2380 or 1-800-845-6420  
TOLL FREE: 1-800-54DEMCO (1-800-543-3626)  
[www.towdemco.com](http://www.towdemco.com)