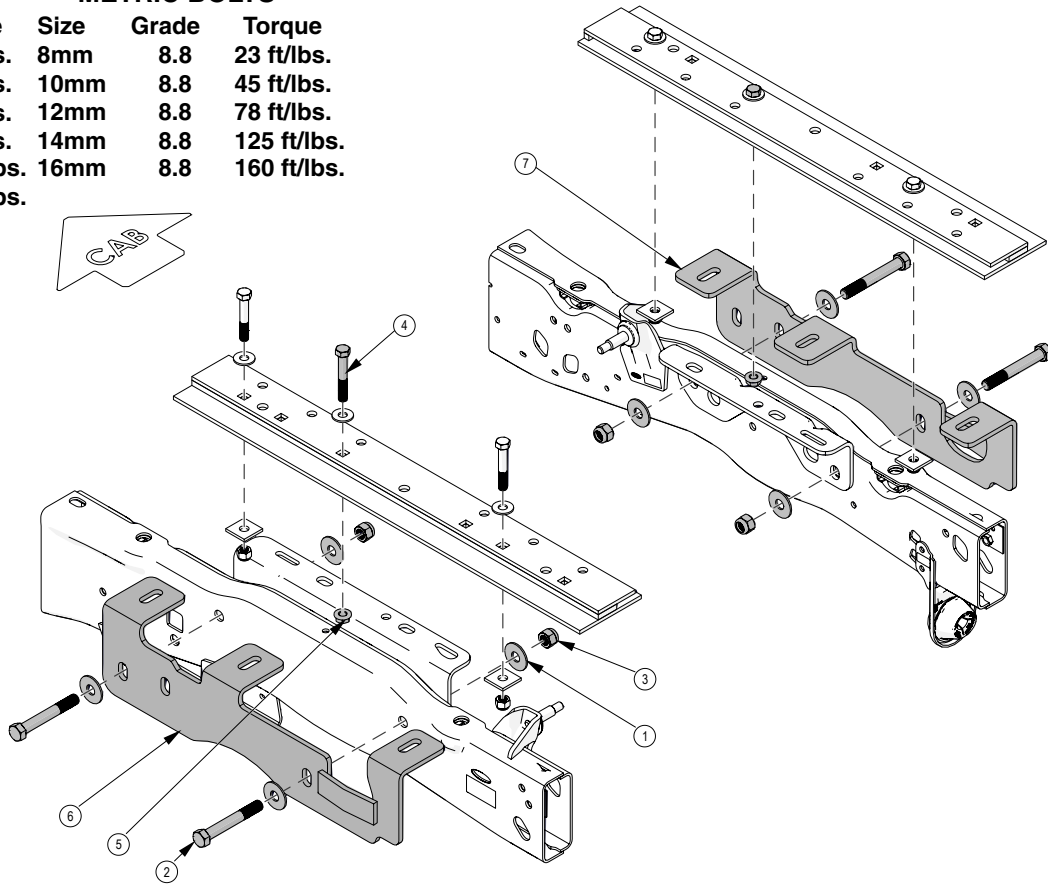


FRAME BRACKET 8553017

Ford F250/F350 Super Duty 6-1/2' & 8' Box

BOLT TORQUE SPECIFICATIONS

STANDARD BOLTS			METRIC BOLTS		
Size	Grade	Torque	Size	Grade	Torque
5/16"	5	18 ft/lbs.	8mm	8.8	23 ft/lbs.
3/8"	5	30 ft/lbs.	10mm	8.8	45 ft/lbs.
7/16"	5	50 ft/lbs.	12mm	8.8	78 ft/lbs.
1/2"	5	75 ft/lbs.	14mm	8.8	125 ft/lbs.
5/8"	5	150 ft/lbs.	16mm	8.8	160 ft/lbs.
3/4"	5	290 ft/lbs.			

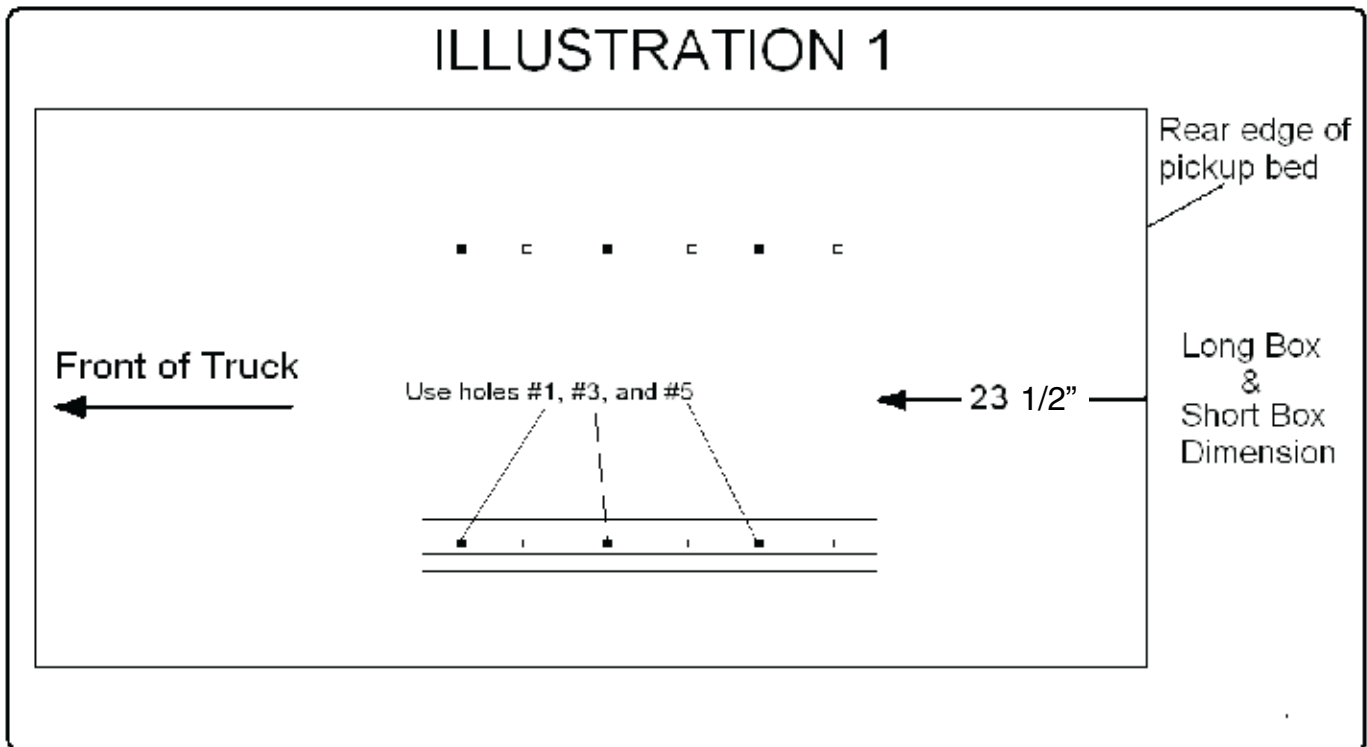


ITEM	PART #	DESCRIPTION	QTY.
1	00477	.625 FLAT WASHER	8
2	02434	BOLT, .625NC X 4.50" GR.5 HEX	4
3	02587	NUT .625NC NYLON LOCK	4
4	05290	BOLT, .50NC X 3.25" GR.5 HEX	2
5	10379	NUT .50NC SERRATED FLANGE	2
6	15916-76	DRIVER SIDE FRAME BRACKET	1
7	15917-76	PASSENGER SIDE FRAME BRACKET	1
8	15367	VINYL 5" (NOT SHOWN)	10'
9	15919-76	SL SHIMS (NOT SHOWN)	2

Please order replacement parts by PART NO. and DESCRIPTION.

WARRANTY POLICY, OPERATOR MANUALS & REGISTRATION

Go online to www.demco-products.com to review Demco warranty policies, operator manuals and register your Demco product.



CAUTION: Do not install base rails over plastic bed liners. Plastic bed liners must be cut out of the way. Rails may be installed on spray in liners.

NOTE: All metal surfaces that come in contact with the aluminum body need to have vinyl placed in between to prevent corrosion.

NOTE: Consult spray liner installer for recommended curing time.

1. Apply vinyl to bottom of rails & shims
2. Fully assemble the 5th wheel hitch on a flat, level surface and pin into the base rails (assembly instructions come with hitch components). Place assembled hitch in truck bed between the wheel wells, center it side to side and measure 23 1/2" from back edge of truck box to back edge of bed rail.
3. First check for obstruction under box, then drill two 17/32" holes thru hole #1 in each bed rail. Insert two 1/2" x 3" long hex bolts and 1/2" flat washers.
4. Lift up spring loaded locking pins and slide hitch back to rear most set of holes and lock into place. This will help to align base rails so they remain square for best operation. Drill thru hole #5 of each bed rail and insert two 1/2" x 3" long hex bolts and 1/2" flat washers. Drill thru hole #3 of each bed rail and insert two 1/2" x 3-1/4" long hex bolts and 1/2" flat washers.
5. Apply vinyl to top of each frame bracket that contacts underside of box.
6. Attach drivers and passenger frame brackets against frame using existing holes in frame. Use 5/8" x 4-1/2" bolts and 5/8" flat washers, 1 washer per side of the frame and 5/8" nylon lock nut. Push bracket up so mounting tabs are tight with the bottom of the box and 1/2" bolts from top rail extend down thru slotted holes in frame bracket tabs. Tighten frame brackets to frame and rail bolts #1 and #5 using 3/16" spacer plates (from kit 6012) and 1/2" nylon hex nuts.
7. For hole #3, use 1/2" x 3-1/4" bolt and 1/2" flat washer on each rail (included in this kit). DO NOT use 1/2" x 3" bolt in 6012 kit. Use 1/2" serrated flange nut included in this kit, tighten. **NOTE:** use tape on wrench to hold nut or tape nut in center of slot on frame bracket to aid in installation.
8. Do not use SL shims from kit 6012 (#14218-76). Use included 1/2" shims from this frame bracket kit.

DEMCO

4010 320th St., Boyden, IA. 51234

Phone: (712) 725-2311

Fax: (712) 725-2380

Toll Free: 1-800-54DEMCO (1-800-543-3626)

**Demco warranty policies, operator manuals, and product registration
can be found online:**

www.demco-products.com

