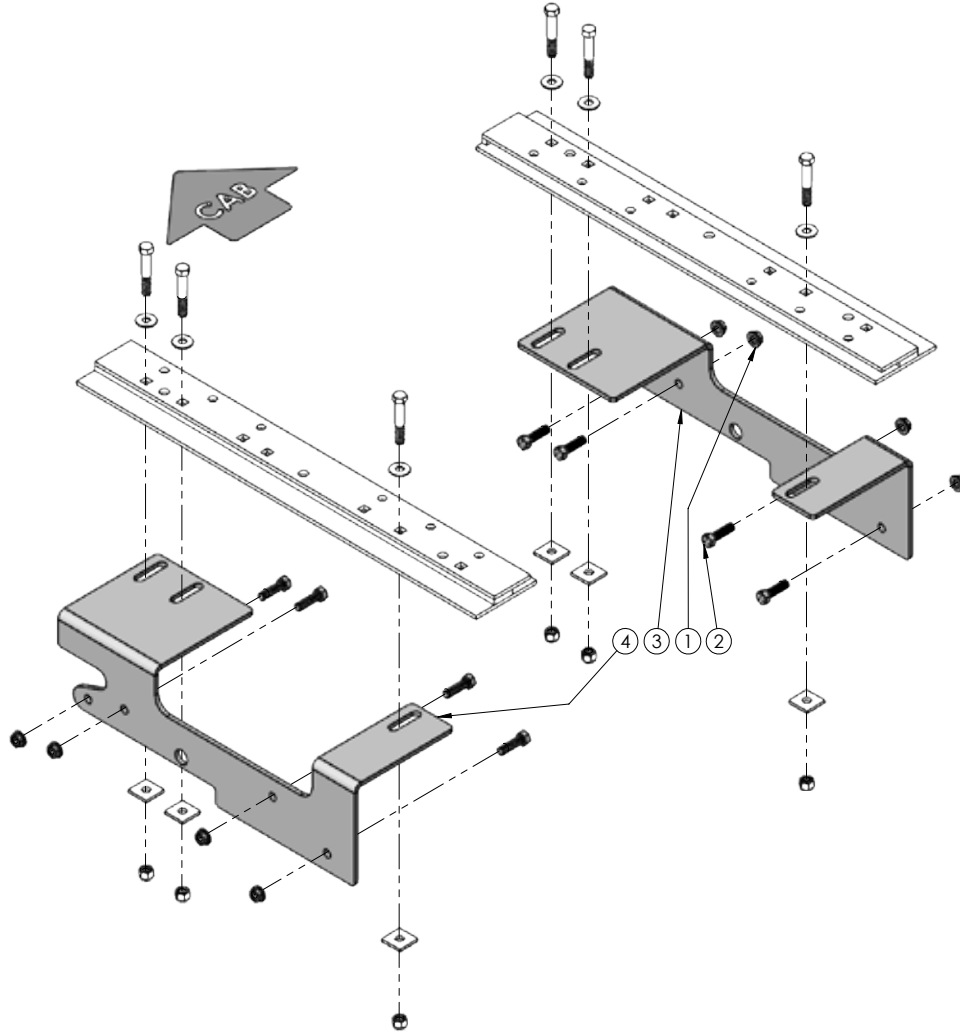


FRAME BRACKET 8553019

Chevy Silverado 1500 & GMC Sierra 1500 5-1/2' & 6-1/2' Box



ITEM	PART #	QTY	DESCRIPTION
1	10379	8	1/2" UNC FLANGED NUT
2	14266	8	BOLT .50NC X 1.75 GR5 HEX KNURLED NECK
3	16687-76	1	FRAME BRACKET, PASSENGER SIDE
4	16688-76	1	FRAME BRACKET, DRIVER SIDE
-	15919-76	2	.50" SHIM (NOT SHOWN)
-	14238	1	1/2" FISH WIRE (NOT SHOWN)
-	12329	2	LOCTITE (NOT SHOWN)

Please order replacement parts by **PART NO.** and **DESCRIPTION.**

Introduction

8553019 General Assembly & Install Instructions

WARRANTY POLICY, OPERATOR MANUALS & REGISTRATION

Go online to www.demco-products.com to review Demco warranty policies, operator manuals and register your Demco product.

CAUTION: Do not install base rails over plastic bed liners. Plastic bed liners must be cut out of the way. Rails may be installed on spray in liners.

NOTE: All metal surfaces that come in contact with the aluminum body need to have vinyl placed in between to prevent corrosion.

NOTE: Consult spray liner installer for recommended curing time.

Truck Bed Drilling Instructions Without Template:

Truck bed drilling instructions with the template are located on page 5.

1. Completely assemble hitch. See GENERAL INSTRUCTIONS and SAFETY supplied.
2. Place and lock the hitch into the SL base rail in the back of truck, center the hitch and the rails from side to side.
3. Measure "A" from back edge of truck box to back edge of bed rails, as shown in Drawing #1.

NOTE: Dimension is in the table below Drawing #1.

4. **CHECK UNDERNEATH BOX AT BOLT HOLE LOCATIONS FOR ANY OBSTRUCTIONS.**

5. Drill one 17/32" holes through hole #1 on each SL bed rail.

NOTE: Touch up the bare metal with some paint that matches the box of the truck.

6. Insert two 1/2" x 3" long hex bolts and two 1/2" washers through the drilled holes.

7. Slide hitch to rear position, to parallel bed rails.

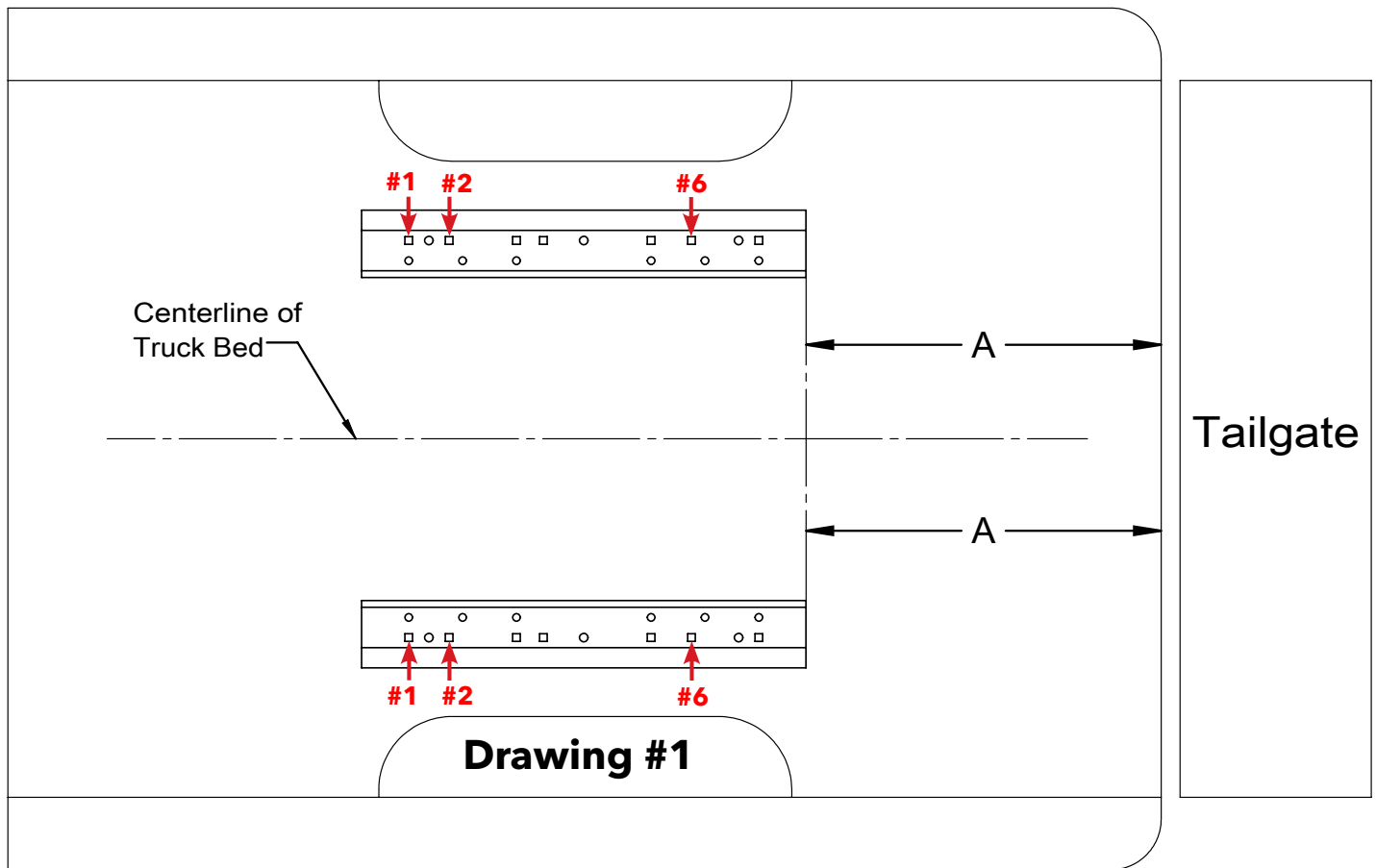
8. Drill holes #2 and #6 on each SL bed rail. Insert four 1/2" x 3" hex bolts.

NOTE: Touch up the bare metal with some paint that matches the box of the truck.

9. Insert four 1/2" x 3" hex bolts and four 1/2" washers through the drilled holes.

BOLT TORQUE SPECIFICATIONS

STANDARD BOLTS			METRIC BOLTS		
Size	Grade	Torque	Size	Grade	Torque
5/16"	5	18 ft/lbs.	8mm	8.8	23 ft/lbs.
3/8"	5	30 ft/lbs.	10mm	8.8	45 ft/lbs.
7/16"	5	50 ft/lbs.	12mm	8.8	78 ft/lbs.
1/2"	5	75 ft/lbs.	14mm	8.8	125 ft/lbs.
5/8"	5	150 ft/lbs.	16mm	8.8	160 ft/lbs.
3/4"	5	290 ft/lbs.			



BOX LENGTH	DIMENSIONS	MEASUREMENT
5-1/2'	A	*18-1/2"
6-1/2'	A	*18-1/2"
8'	A	*N/A
*ALL MEASUREMENTS ARE FROM THE BACK OF THE BOX		

Installation

Truck Bed Drilling Instructions with Template

1. Place the template in the box and center the template between the wheel wells.
2. **IF NEEDED, TAPE THE TEMPLATE DOWN.**
3. Measure from the back of the box to the template on the passengers side and drivers side to insure that the template is square. See drawing #2 and table on page 6 for measurements.
4. Locate which holes you will be drilling, by the ones marked with a red arrow.
5. Take a 3/8" locating punch and mark the holes to be drilled.

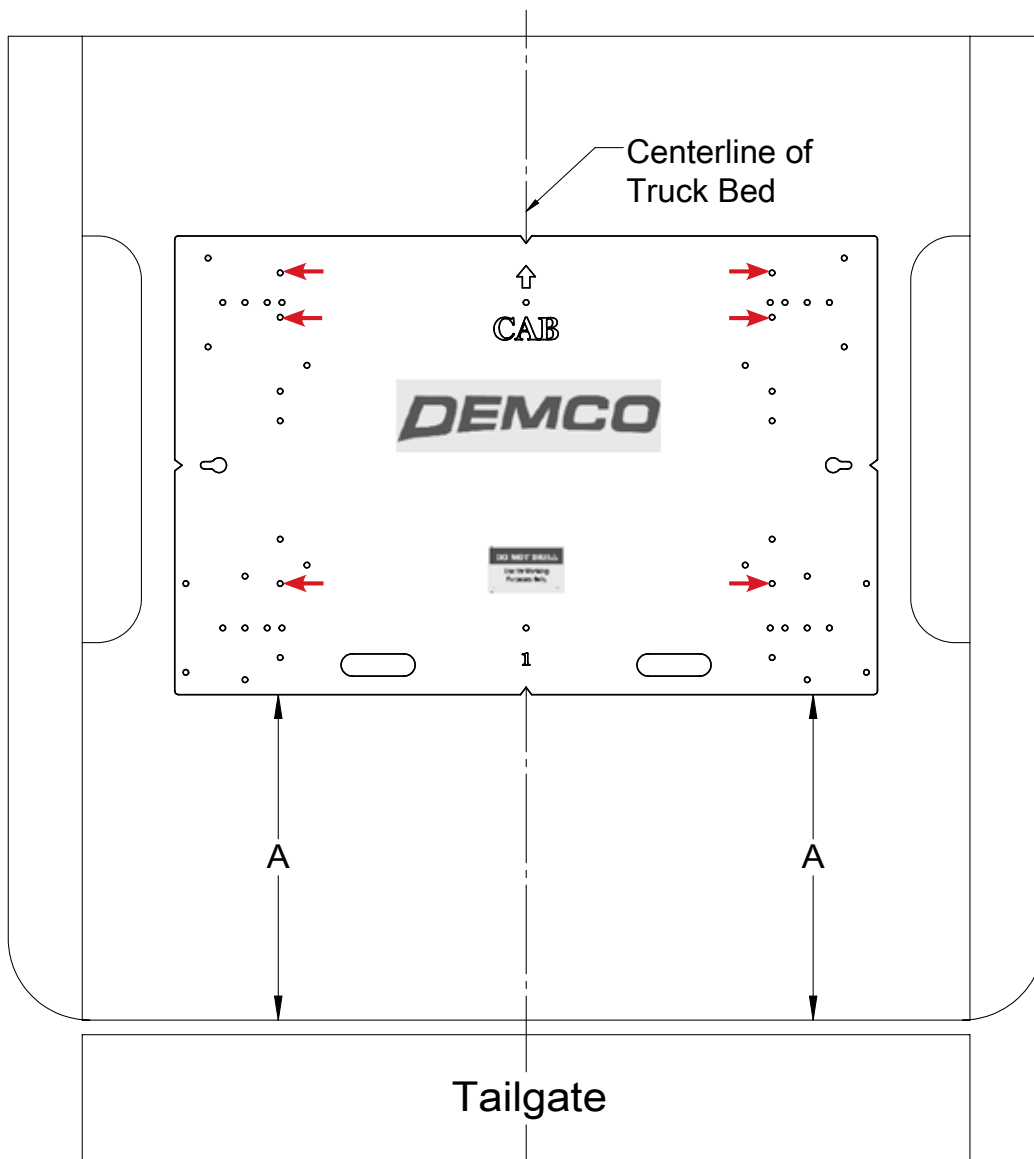
NOTE: DO NOT DRILL THE HOLES WITH THE TEMPLATE STILL IN THE BOX, THIS WILL RUIN THE TEMPLATE

6. **BEFORE YOU DRILL, MAKE SURE THAT THE TEMPLATE DID NOT MOVE, AND THAT THERE ARE NO OBSTRUCTIONS IN THE WAY.**
7. Remove the template and drill the six marked holes (from step 5) with a 1/2" drill bit.

NOTE: A pilot hole may need to be drilled

8. Deburr each hole.
9. Touch up the bare metal with some paint that matches the box of the truck.
10. Once drilling instructions are completed, return to step #1 on page 5 for frame bracket installation.

Truck Bed Drilling Instructions with Template



Drawing #2

BOX LENGTH	DIMENSIONS	MEASUREMENT
5-1/2'	A	*19-1/2"
6-1/2'	A	*19-1/2"
8'	A	*N/A
*ALL MEASUREMENTS ARE FROM THE BACK OF THE BOX		

Installation

Frame Bracket Installation

1. Install the passenger and drivers side frame brackets up tight to the bottom side of the bed, while feeding the six bolts down through the slots in the frame brackets.
2. Install six spacer plates and six 1/2" nylon nuts.
3. Clamp the frame brackets tight against the frame.

NOTE: Make sure that the frame brackets are tight to the bottom of the bed.



Passengers Side Shown

4. Using the holes in the frame brackets as a guide, drill the frame in the four mounting holes on each frame bracket with a 1/2" drill bit.
NOTE: You may want to drill a smaller pilot hole to make drilling easier.
5. Brackets will be bolted onto frame by fishing a 1/2" x 1 3/4" knurl bolts through frame with a 1/2" fish wire and attach with a 1/2" serrated flange nut on outside of bracket. Use the access hole shown below in the picture to fish the bolts through.
6. Install the SL shims that are provided to you with the frame bracket kit. **DO NOT** use the SL shims that come with the 6012 Rail Kit.



Passengers Side Shown

7. Tighten and torque all bolts to the chart on the top of page 2.
8. Re-install the rear wheels and rear wheel well liners (if removed), double check all fasteners for tightness, and lower truck (if raised).
9. Unpin and slide the hitch assembly forward and back to make sure it can slide freely with ease. If there was any shifting during installation that caused any binding, simply loosen the six bolts that attach the base rail to the frame brackets and realign the base rail and retighten.

DEMCO

4010 320th St., Boyden, IA. 51234

Phone: (712) 725-2311

Fax: (712) 725-2380

Toll Free: 1-800-54DEMCO (1-800-543-3626)

**Demco warranty policies, operator manuals, and product registration
can be found online:**

www.demco-products.com

