



#9523108

RV TOW Harness Wiring Kit INSTALLATION INSTRUCTIONS

Fits: 2013 Chevrolet Malibu

- Kit Includes:
- (1) Wiring Harness with 4-Flat Connector
 - (1) 48" 4-Flat Extension
 - (20) 15" Cable Tie
 - (1) 4-Flat Bracket
 - (2) Adhesive Cable Tie Pad
 - (3) #8 Self-Tapping Ground Screw

© 2010 Trailermate

RV TOW HARNESS INSTALLATION INSTRUCTIONS

1. Read instructions thoroughly before beginning.
2. Open trunk and remove threshold by pulling up on it. Remove floor cover and set both items aside. On both sides carefully remove 3 clips on felt liner shown in **Figures 1 & 2**.

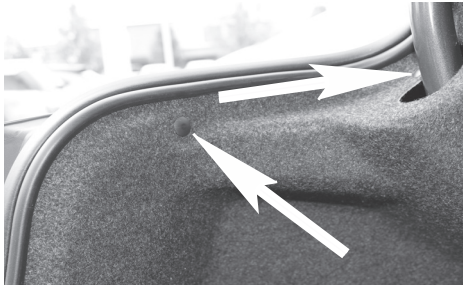


Figure 1

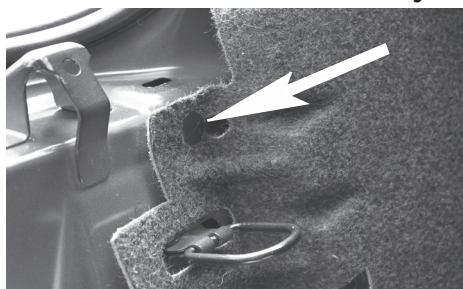


Figure 2

3. Pull back felt liner to identify taillight connectors shown in **Figure 3**. They will be similar to those on RV harness.



Figure 3

4. Starting on driver's side route RV harness with connectors containing Yellow wires behind felt liner to taillight location. Separate vehicle connector and position connectors between separated vehicle harness connectors. Press connectors firmly into vehicle connectors until they lock into place shown in **Figure 4**. Pull on connectors to ensure the locks are engaged.

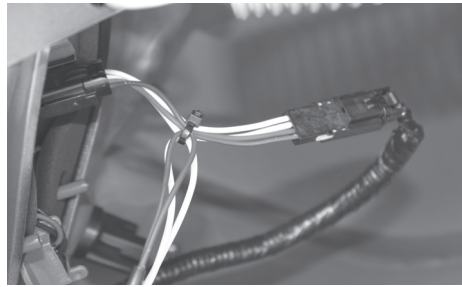


Figure 4

5. Locate a clean and accessible mounting location on vehicle near RV harness ends within reach of ring terminals. Remove any debris or undercoating to expose a clean metal surface and drill a 3/32" hole.

Caution: Do not drill into any exposed surfaces or through the vehicle body.

6. Attach ring terminals on White wires using screw provided.

7. Route portion of RV harness with connectors containing Green wires down to bottom of side wall panel along the rear of vehicle behind threshold and up behind passenger side felt liner. Repeat Step 4 for connector plugging.

8. Cut cable ties on 4-Flat portion of harness. Route 4-Flat portion of RV harness with connector ends containing Green wire to grommet located in rear center wall of vehicle shown in **Figure 5**. Unseat grommet, make a slit in it and fit around 4-Flat wire. If so apply silicon around area to seal.

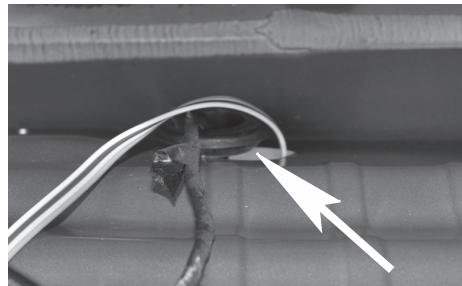


Figure 5

9. Underneath vehicle route 4-Flat along bumper frame to passenger side. Clean a spot on bumper and apply cable tie pad and secure 4-Flat with cable tie shown in **Figure 6**.

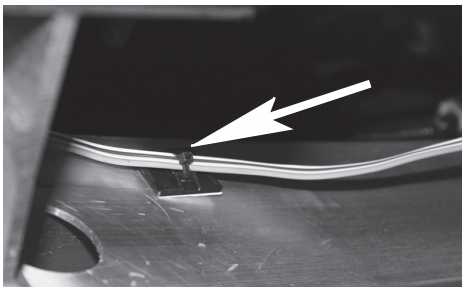


Figure 6

10. On left side of passenger's side rear wheel well remove screw holding wheel well cover shown in **Figure 7**. Route a fish tape up and over wheel well and secure it to 4-flat. Pull 4-flat up and over wheel well.



Figure 7

Caution: Make sure to avoid areas that contain moving parts or could cut, pinch or burn the wires when routing the 4-flat harness towards the front of the vehicle. Also avoid routing harness near the fuel lines as it may cause the fuel to ignite.

Failure to follow these warnings may cause property damage, personal injury or loss of life.

11. Route 4-Flat towards front of vehicle underneath trim panel on passenger side and secure with cable ties provided.

12. Once 4-flat is routed behind trim panel, place cable tie pad to frame of vehicle shown in **Figure 8** and secure 4-flat with cable tie provided.



Figure 8

13. From inside engine compartment route fish tape down through wheel well shown in **Figure 9**. Secure 4-flat to fish tape and pull into engine compartment.

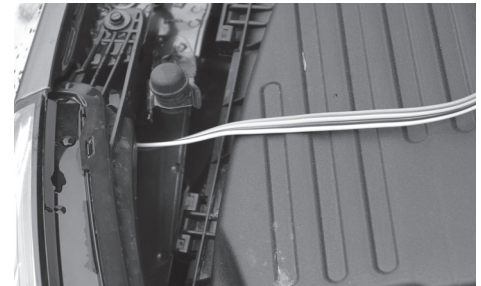


Figure 9

14. Continue routing 4-flat to driver's side of engine compartment shown in **Figure 10**. Find a location suitable to mount the 4-Flat bracket. Using the bracket as a template mark two holes and drill two 3/32" holes and attach the bracket using the two remaining screws.

Caution: Take care not to drill through the body or any exposed surface.



Figure 10

15. With the 4-flat extension plugged into the RV harness on one end and the motorhome on the other, test that the functions work on the Chevrolet Malibu.

These functions will only work on the brake/tail combination lamp.

4-Flat Harness Color Code:

- White - Ground
- Brown - Tail Lights
- Green - Right Turn and Brake Signal
- Yellow - Left Turn and Brake Signal

When not in use store the 4-flat extension in the vehicles glove box.

16. At the rear of the vehicle secure any loose wires to the vehicle's crossmember using cable ties provided. Re-install taillights to vehicle.