



#9523110

RV TOW Harness Wiring Kit INSTALLATION INSTRUCTIONS

Fits: 2013 Ford Escape

- Kit Includes:
- (1) Wiring Harness with 4-Flat Connector
 - (1) 48" 4-Flat Extension
 - (20) 15" Cable Tie
 - (1) 4-Flat Bracket
 - (3) #8 Self-Tapping Ground Screw

© 2010 Trailermate

RV TOW HARNESS INSTALLATION INSTRUCTIONS

1. Read instructions thoroughly before beginning.
2. Open rear hatch and using a Torx T20 screwdriver remove two screws on threshold shown in **Figure 1A** and a flat screwdriver to remove two plastic clips shown in **Figure 1B**. Gently pull up to remove threshold and set aside.

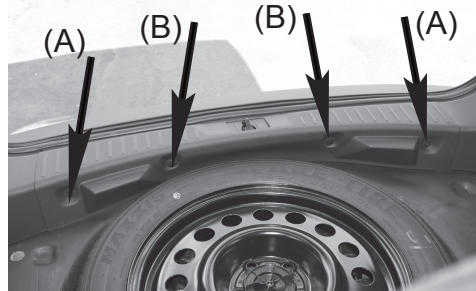


Figure 1

3. Using a small flat screwdriver, remove plastic covers that cover bolts that hold taillights in place on both sides. Using a 8mm socket remove 2 bolts that hold both taillights in place shown in **Figure 2**. Carefully remove taillights by gently pulling away from vehicle taking care not to damage the alignment tabs. Unplug 4-pin connectors similar to those found on RV harness and set aside. Inspect for dirt and debris and clean if necessary.



Figure 2

4. Starting on drivers side unseat vehicle harness grommet and make a slit in it to allow for the RV harness wiring to pass through. Route RV harness ends containing **Yellow** wire behind interior panel, through grommet opening to taillight cavity shown in **Figure 3**. Plug connectors into separated vehicle harness connectors until they lock into place. Pull on connectors to ensure the locks are engaged. Reseat grommet and it may be necessary to apply silicone to seal grommet where cut was made.

5. Locate a clean and accessible mounting location on vehicle near RV harness ends within reach of White wire and ring terminal. Remove any debris or undercoating to expose a clean metal surface and drill a 3/32" hole.



Figure 3

Caution: Do not drill into any exposed surfaces or through the vehicle body.

6. Attach ring terminal on White wire using screw provided.
7. Route portion of RV harness with connectors containing Green wires down to bottom of side wall panel along the rear of vehicle and up behind passenger side panel. Repeat Step 4 for connector plugging.
8. Cut cable ties on 4-Flat portion of harness. Route 4-Flat portion of RV harness with connector ends containing Green wire to grommet located on drivers side of vehicle shown in **Figure 4**. Unseat grommet, make a slit in it and fit around 4-Flat wire. If so apply silicon around area to seal.

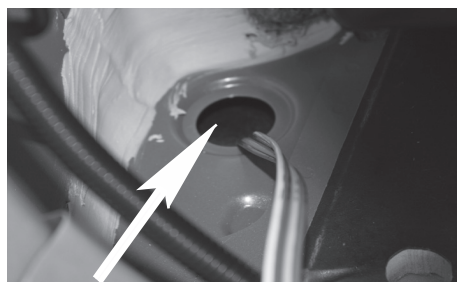


Figure 4

9. Underneath vehicle route 4-Flat wire over exhaust heat shield to driver's side rear wheel well area. Remove bolts using a 7mm socket on right side shown in **Figure 5**.



Figure 5

10. On left side of driver's side rear wheel well remove bolts using a 7mm socket on trim plate shown in **Figure 6**. Route a fish tape over wheel well cover, secure 4-flat to it and pull through wheel well.

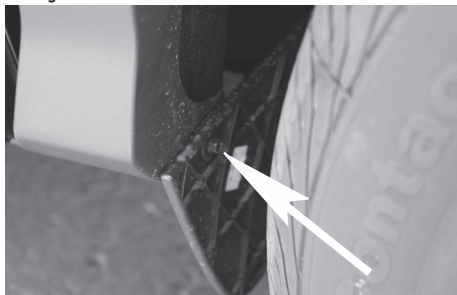


Figure 6

Caution: Make sure to avoid areas that contain moving parts or could cut, pinch or burn the wires when routing the 4-flat harness towards the front of the vehicle. Also avoid routing harness near the fuel lines as it may cause the fuel to ignite.

Failure to follow these warnings may cause property damage, personal injury or loss of life.

11. Route 4-Flat towards front of vehicle underneath trim panel on driver's side. Secure with cable ties provided shown in **Figure 7**.



Figure 7

12. At driver's side front wheel well remove push clips with a flat screwdriver shown in **Figure 8**.

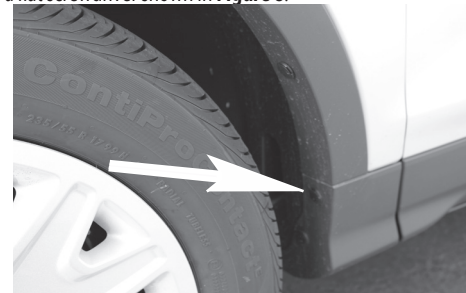


Figure 8

13. Route fish tape from inside engine compartment, shown in **Figure 9**, to driver's side wheel well down to location from Step 12. Secure 4-flat to fish tape and pull into engine compartment.



Figure 9

14. In engine compartment find a location suitable to mount the 4-Flat bracket. Using the bracket as a template mark two holes and drill two 3/32" holes and attach the bracket using the two remaining screws.

Caution: Take care not to drill through the body or any exposed surface.

15. With the 4-flat extension plugged into the RV harness on one end and the motorhome on the other, test that the functions work on the Ford Escape. These functions will only work on the brake/tail combination lamp.

4-Flat Harness Color Code:

- White - Ground
- Brown - Tail Lights
- Green - Right Turn and Brake Signal
- Yellow - Left Turn and Brake Signal

When not in use store the 4-flat extension in the vehicles glove box.

16. At the rear of the vehicle secure any loose wires to the vehicle's crossmember using cable ties provided. Re-install taillights to vehicle.

NOTE: THIS RV HARNESS ALSO INCLUDES A CONNECTION POINT LABELED "FOR TRAILER TOW USE ONLY: TAILLIGHT REQUIRED." IF YOU DECIDE TO LEAVE YOUR RV HARNESS ON THE VEHICLE AT ALL TIMES AND WANT TO TOW A TRAILER SIMPLY PLUG IN 4-FLAT HARNESS PART NUMBER 85350 AND YOU'RE READY TO TOW.