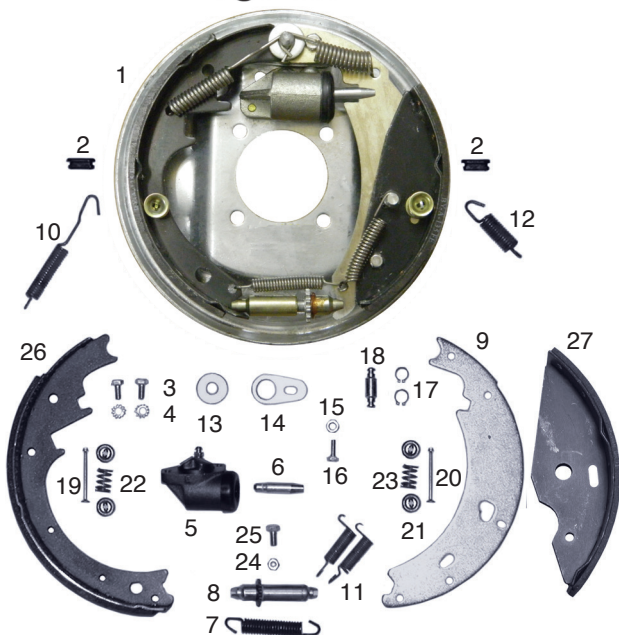


3,500 lb Capacity Per Axle

Demco 10" x 2-1/4" Free Backing Brake
Use with 545UHI thru 655UHI Hubs & Drums

Demco



I.D.	Part No.	Qty. Req.	Description	Wt. Lb
	4071M*		Pair 10" Free backing brakes	21
(1)	40715M	(shown)	Right hand hydraulic brake complete	10
1	40716M		Left hand hydraulic brake complete	10
Replacement Parts				
2	467	2	Adjuster hole plug	
3	B51605G5ZC	2	5/16"-18 x 1/2" Hex head bolt gr. 5	
4	05424X	2	5/16" External tooth washer	
(5)	1907	1	Wheel cylinder assembly - right (shown)	
5	1906	1	Wheel cylinder assembly - left	
6	SB9783	1	Push rod	
7	100-087	1	Adjuster spring	
8	100-086	1	Adjuster screw assembly	
9	17916-95		DISCONTINUED	
10	310	1	Retractor spring	
11	6814	2	Spring - lever	
12	44386	1	Spring - lever	
13	00205X	1	Anchor post washer	
14	17917-95		DISCONTINUED	
15	LN516G2ZC	1	5/16"-18 Lock nut	
16	B5160625G5ZC	1	5/16"-18 x 5/8" Hex head bolt gr. 5	
17	7778		DISCONTINUED	
18	05824X	1	Pin - front shoe	
19	10959	1	Shoe hold-down pin (#8)	
20	03562X	1	Shoe hold-down pin (#1)	
21	9789	4	Shoe hold-down cup	
22	05983X	1	Shoe hold-down spring (silver)	
23	9790	1	Shoe hold-down spring (yellow)	
24	LN14G2ZC	1	1/4"-20 Lock nut	
25	B14075G5ZC	1	1/4"-20 x 3/4" Hex head bolt gr. 5	
26	44372	1	Shoe rear (Dico & Demco)	
27	44371	1	Shoe front (Dico & Demco)	
	4-7161G5		Brake mounting kit (4-bolt/nut/washer)	

* Pair includes mounting hardware. Line kits - see page 118.