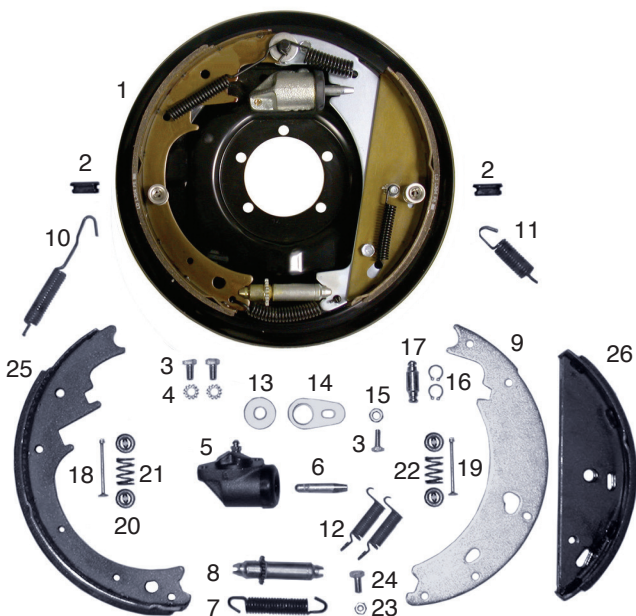


6,000 lb Capacity Per Axle

Demco 12" x 2" Free Backing Hydraulic Brake
Use with 12" Hubs & Drums

Demco



I.D.	Part No.	Qty. Req.	Description	Wt. Lb
	4202M*		Pair 12" Free backing hydra. brakes	31
(1)	42028M	(shown)	Right hand hydraulic brake complete	15
1	42029M		Left hand hydraulic brake complete	15

Replacement Parts

2	467	2	Adjuster hole plug	
3	B5160625G5ZC	3	5/16"-18 x 5/8" Hex head bolt gr. 5	
4	05424X	2	5/16" External tooth washer	
(5)	1907	1	Wheel cylinder assembly - right (shown)	
5	1906	1	Wheel cylinder assembly - left	
6	SB9783	1	Push rod	
7	100-090	1	Adjuster spring	
8	100-089	1	Adjuster screw assembly	
9	18502-95	1	Shoe lever	
10	100-092	1	Spring - shoe	
11	44386	1	Spring - lever	
12	6814	2	Spring - shoe return	
13	00205X	1	Anchor post washer	
14	17917-95	1	Travel link	
15	LN516G2ZC	1	5/16"-18 Lock nut	
16	7778	2	Retaining ring	
17	05824X	1	Front shoe pin	
18	18505	1	Shoe hold-down pin (#4)	
19	03562X	1	Shoe hold-down pin (#1)	
20	9789	4	Shoe hold-down cup	
21	05983X	1	Shoe hold-down spring (silver)	
22	9790	1	Shoe hold-down spring (maroon)	
23	LN14G2ZC	1	1/4"-20 Lock nut	
24	B14075G5ZC	1	1/4"-20 x 3/4" Hex head bolt gr. 5	
25	44848	1	Shoe rear (Dico & Demco)	
26	44845	1	Shoe front (Dico & Demco)	
	5-381G5		Brake mounting kit (5-nut/bolt/washer)	

* Pair includes mounting hardware. Line kits - see page 124.