

# INSTALLATION INSTRUCTIONS

## EQUIPMENT REQUIRED:

**WIRING ACCESS LOCATION:** PC3

**DRILL BITS:** 1/2"

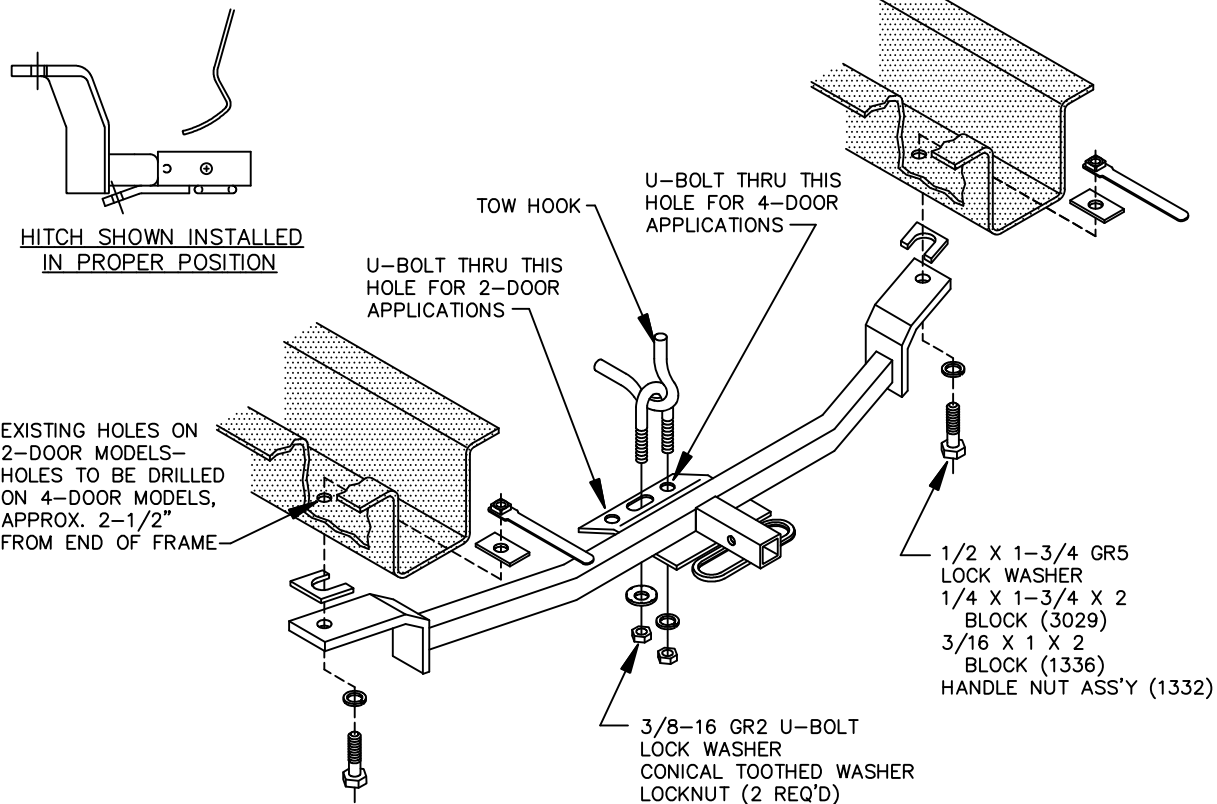
**HITCH REQUIRES 1/2" PIN AND CLIP.**

**WRENCHES:** (TIGHTEN ALL FASTENERS WITH TORQUE WRENCH) 9/16, 3/4

## VEHICLE

ACURA INTEGRA  
2 AND 4 DOOR MODELS

2000 LB MAX GROSS TRAILER WT  
200 LB MAX TONGUE WEIGHT  
DO NOT EXCEED TOWING VEHICLE RATINGS



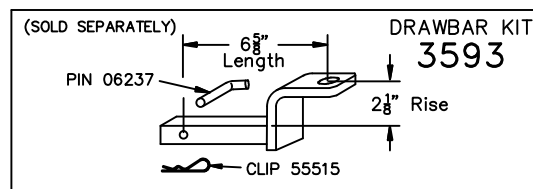
### INSTALLATION ON 2-DOOR MODELS:

1. RAISE HITCH INTO POSITION AND LOOSELY INSTALL U-BOLT, CONICAL TOOTHED WASHER, LOCK WASHER AND LOCKNUTS AS SHOWN.  
**NOTE:** U-BOLT IS INSTALLED IN DRIVER'S SIDE HOLE/SLOT COMBINATION, WITH CONICAL TOOTHED WASHER INSTALLED OVER SLOT.
2. INSERT 3/16 X 1 X 2 BLOCK (1336) AND HANDLE NUT ASSEMBLY (1332) THRU END OF FRAME TO HOLE IN FRAME.
3. POSITION 1/4 X 1-3/4 X 2 U-SHAPED BLOCK (3029) BETWEEN HITCH SIDE ARM AND VEHICLE FRAME, EACH SIDE. BE CAREFUL NOT TO SANDWICH AND CRUSH TURNED-DOWN EDGE OF FRAME HOLE. INSTALL REMAINING FASTENERS AS SHOWN.

### INSTALLATION ON 4-DOOR MODELS:

1. RAISE HITCH INTO POSITION AND LOOSELY INSTALL U-BOLT, CONICAL TOOTHED WASHER, LOCK WASHER AND LOCKNUTS AS SHOWN.  
**NOTE:** U-BOLT IS INSTALLED IN PASSENGER'S SIDE HOLE/SLOT COMBINATION, WITH CONICAL TOOTHED WASHER INSTALLED OVER SLOT.
2. POSITION HITCH SUCH THAT EACH HITCH SIDE ARM ATTACHMENT HOLE IS LOCATED 2-1/2" FROM END OF FRAME. USING HITCH AS A TEMPLATE, DRILL 1/2" HOLE IN EACH SIDE OF FRAME.
3. INSERT 3/16 X 1 X 2 BLOCK (1336) AND HANDLE NUT ASSEMBLY (1332) THRU END OF FRAME TO HOLE DRILLED IN STEP 2.
4. POSITION 1/4 X 1-3/4 X 2 U-SHAPED BLOCK (3029) BETWEEN HITCH SIDE ARM AND VEHICLE FRAME, EACH SIDE. INSTALL REMAINING FASTENERS AS SHOWN.

TIGHTEN 3/8 GR2 FASTENERS TO 20 LB.-FT.  
TIGHTEN 1/2 GR5 FASTENERS TO 75 LB.-FT.



USE ONLY THE DRAWBAR SHOWN FOR CORRECT BUMPER CLEARANCE AND HEIGHT.  
DRAWBAR MUST BE USED IN THE RISE POSITION ONLY.

THIS PRODUCT COMPLIES WITH SAFETY SPECIFICATIONS AND REQUIREMENTS FOR CONNECTING DEVICES AND TOWING SYSTEMS OF THE STATE OF NEW YORK, V.E.S.C. REGULATION V-5 AND SAE J684.

APPROX WEIGHT (LB.)	FASTENER KIT
18.0	01130-880

**NOTE:** Check hitch frequently, making sure all fasteners and ball are properly tightened. If hitch is removed, plug all holes in trunk pan or other body panels to prevent entry of water and exhaust fumes. A hitch or ball which has been damaged should be removed and replaced. Observe safety precautions when working beneath a vehicle and wear eye protection. Follow car maker's specs for maximum trailer weight and tongue weight. Do not cut access or attachment holes with a torch.

Cequent Performance Products  
Plymouth, Michigan  
PRINTED IN MEXICO